



# TEKLYNX CENTRAL 8 Release Notes

Version 8.0

# Table of Contents

System Requirements .....	3
Server .....	3
Client: .....	4
Mobile Click Print Application: .....	4
Virtual Environment .....	5
TEKLYNX CENTRAL 8.0 New Features, Improvements and Fixes .....	6
TEKLYNX CENTRAL 8.0 .....	6
TEKLYNX CENTRAL 7 New Features, Improvements and Fixes .....	9
TEKLYNX CENTRAL 7.0 .....	10
TEKLYNX CENTRAL 6 New Features, Improvements and Fixes .....	12
TEKLYNX CENTRAL 6.0 .....	12
TEKLYNX CENTRAL 5 New Features, Improvements and Fixes .....	15
TEKLYNX CENTRAL 5.1 .....	15
TEKLYNX CENTRAL 5.0 .....	16
TEKLYNX CENTRAL 4 New Features, Improvements and Fixes .....	21
TEKLYNX CENTRAL 4.7 .....	21
TEKLYNX CENTRAL 4.6 .....	26
TEKLYNX CENTRAL 4.5 .....	29
TEKLYNX CENTRAL 4.2 .....	31
TEKLYNX CENTRAL 4.0 .....	35
Known Limitations .....	40
Compatibility with other TEKLYNX Software .....	46

# System Requirements

## Server

This product has been tested on the following Windows® operating systems:

- Windows® Server 2025 Version 24H2 (Build 26100.3476)
- Windows® Server 2022 Version 21H2 (Build 20348.3328)
- Windows® Server 2019 Version 1809 (Build 17763.7009)
- Windows® Server 2016 Version 1607 (Build 14393.7876)
- Windows® Server Core 2025 Version 21H2 (Build 26100.1742)
- Windows® Server Core 2022 Version 21H2 (Build 20348.2322)
- Windows® Server Core 2019 Version 1809 (Build 17763.5458)
- Windows® Server Core 2016 Version 1607 (Build 14393.5850)

**All available updates should be installed.**

**Memory** - 8Gb RAM minimum, 16Gb RAM is recommended.

Multi-processor or multi-core system is recommended to take advantage of the multithreading.

**Hard disk space** - A hard drive with at least 10 GB free disk space (depending on the installation options).

**Display** - Windows display adapter capable of 1366x768 with True Color capabilities and DirectX® 9 (DirectX 11 compliant card recommended).

### Supporting software

- .NET Framework 4.8, 8.0
- IIS 10.0 or higher
- ASP.NET 4.0
- Any pdf reader (Adobe Acrobat Reader is available with the installation)
- LAS 2025.00.00 with UMSS 2025.00.00 (versions from TEKLYNX CENTRAL 8.0 package)
- SENTINEL 2025.00.00
- CODESOFT 2025.00.00

### Databases

- SQL Server 2016/2017/2019/2022. SQL Server Express is recommended for demo purposes only.
- Oracle 19 or higher.

**Note:** no additional software is required for Basic Mode connection.

**For TNS connection:** Oracle Instant Client (19.25.0.0.0) provided on DVD.

- ClickPrint Web Application works with SQL Server only.

## Client:

This product has been tested on the following Windows® operating systems:

- Windows®11 x64 Version 24H2 (Build 26100.3476)
- Windows® 10 x86/x64 Version 22H2 (Build 19045.5608)

**Memory** - 8Gb RAM minimum, 16Gb RAM recommended.

**Hard disk space** - A hard drive with at least 1.5 GB free disk space (depending on the installation options).

**Display** - Windows display adapter capable of 1366x768 with True Color capabilities and DirectX® 9 (DirectX 11 compliant card recommended).

### Supporting software

- .NET Framework 4.8 (provided on DVD)

**Web part** - Microsoft Edge 132.0 or higher, Firefox 134.0 or higher, Google Chrome 132.0 or higher.

## Mobile Click Print Application:

iOS 10.2 or higher, 13.3 is recommended. Both iPhone and iPad devices are supported. Android 8.0, 8.1, 9.0, 10.0. GUI is optimized for mobile phones; tablets are not recommended.

**Note:** LocalPrint plugin for Chrome works in domain environment only.

## Virtual Environment

This product has been tested on the following Virtual Environment platforms:

- VMWare ESXi 8.0
- VMWare ESXi 6.0 vCenter 6.0 vSphere Client 6.0
- Citrix Hypervisor 8.2.0 Cumulative Update 1
- Microsoft Hyper-V Server 2022
- Oracle VM Virtual Box 7.1.6
- VMware Workstation 17.6.2

[Back to Menu](#)

## TEKLYNX CENTRAL 8.0 New Features, Improvements and Fixes

### TEKLYNX CENTRAL 8.0

Task	New Features and Improvements	Version
	<b>NEW</b> Electronic document licensing - Electronic document print is consumption-based and calculated per week - Consumption of electronic document volume is directly proportional to API printer licensing Refer to <a href="#">TKCENTRAL_Electronic_document_licensing.pdf</a> document for detailed information.	8.0
20178	<b>NEW</b> Allow Use of Multiple Filters in External Database Configuration	8.0
20179	<b>NEW</b> Option added in the User Logics tab to allow working only with Products	8.0
20230	<b>NEW</b> Create TCPRINT/TCADMIN watches per site	8.0
20512	<b>NEW</b> Local print feature: change to a licensing per web users connected (LABELNET or mobile apps)	8.0
20192	<b>NEW</b> TLS 1.3 compatibility for Windows Server 2022/2025	8.0
1620	<b>NEW</b> Option is available to better manage unused devices and provide information about the last used date for printers	8.0
20177	<b>NEW</b> Ability to reprint all labels from the Web Printing interface, even if they were printed outside the print portal using CODESOFT or SENTINEL	8.0
20182	<b>NEW</b> Option "Trusted Variables Sync" is available on the TCADMIN web site related to variables synchronization through LABELNET Sync Service	8.0
20182	<b>NEW</b> Option "Trusted Variables Sync" is available on the TCADMIN web site related to variables synchronization through LABELNET Sync Service	8.0
20556	<b>NEW</b> Allow for Renaming Printers in Local Print	8.0
20226	<b>NEW</b> Providing list of external data source connections	8.0
20384	<b>NEW</b> Add App var AllowedPrinters for EXTDB	8.0
20561	<b>NEW</b> Windows Server 2025 Support	8.0
20168	<b>NEW</b> External DB. Add logging of SQL requests to external DB	8.0
20471	<b>NEW</b> TCAdmin. BBPI Profiles. Implementing permissions for the "BBPI Profiles" tab	8.0
20496	LA client History dialog in Codesoft shows some comments in language of LA server	8.0

20231	Be able to leverage variable pick lists in CENTRAL strictly based on their definition in the CODESOFT label	8.0
20193	Remove the "Modify at reprint" feature	8.0
20215	True reprint to work with local printing	8.0
20174 / 20408	UMSS permissions optimization: remove redundant permissions and re-organize some groups.	8.0
20399 / 20183	Allow the LABELNET portal working behind an Azure Gateway	8.0
1845	LABELNET Print API should not depend on Devices.def file	8.0
1823	Creating a web clone with CENTRAL 7 does not automatically create the "web clones" folder in Program Files(x86)/Teklynx	8.0
2000	Move turning off and on Logic options to Connections Tabs	8.0
20224 / 20225	Migrate web apps to .NET 8.0	8.0
20227	Remove New Button from TCADMIN for External DB Creation	8.0
20228	Dynamic Refresh or "refresh button" for EXTDB connection	8.0
20194	Remove GUI Customization Option	8.0
1985	Local print feature: manage local printers through the REST API plugin of SENTINEL	8.0
20214	True local reprint	8.0
20443	Click Print. Local Print. Change the algorithm for generating output files for local printing on a windows printers: files must be PDF, not pictures	8.0
20450	Expand Client Push and Manual Batch File Deployment to Include Default Directory Modifications	8.0
20551	TC 8.0 Help and Manuals. Add information about Input Mask behavior during synchronization	8.0
1621	Increase the performance of printing through the web interface	8.0
1947	TC 8.0 Release Notes. Change minimum requirements for Oracle version (min - 19)	8.0
20218	Allow accessing in read/only mode all the fields and variables of a validated label in CODESOFT	8.0
20227	Remove New Button from TCADMIN for External DB Creation	8.0
20454	Allow for configuring of Custom Logo on TK CENTRAL to work from place.	8.0
20465	Remove Automatic Log Off Feature from TCADMIN	8.0
20466	Removing Remember Last Printer option	8.0

20467	Change Truncate Label Path to "Show Label Path"	8.0
20468	Delete Common Variables option for standard mode	8.0
20484	Re-designing Labels page for External DB mode in order to leverage Print API	8.0
20485	Re-designing External DB Workorders page External DB mode in order to leverage Print API	8.0
20486	Re-designing Products page for External DB mode in order to leverage Print API	8.0
20526	External DB. Admin Filters. Add UI and backend field validation	8.0
20579	Performance improvement for print all on External DB	8.0
20581	Display copies configured on labels page. Also, for External DB	8.0
20552	Create toggle so Reprint(web) and Reprint(other) can be controlled	8.0

Ticket ID/ Defect ID	Fixes	Version
1584	My label templates are not in alphabetical order.	8.0
1598	Include Release Candidate Version in Help > About of Command Center.	8.0
20161	TC 7: Workstation info is incorrect in LA history when a label is printed via LN	8.0
20197	Show CS popup windows always on top	8.0
20200	Allow User to Change "Windows Authentication" Account for Database Communication During Installation	8.0
20209	Prep CENTRAL 8 for EATON Batch printing requests	8.0
20297	Workstation gives host error when starting Codesoft (silent installation package)	8.0
20298	TC 7: SEN does not print latest label when printjobs is triggered by LN	8.0
20299	TC 7: LN Print and Reprint prints incorrect label from LA	8.0
20374	Windows sign-out does not close Command Center active windows user session	8.0
20380	Mapped workstation variables should require the plugin to be installed only if mapped variables option is turned on	8.0
20393	Turn off Autocomplete drop down in search field if workorder or product filter is applied with extdb	8.0
1822	Web Clone Folder does not get automatically created when making a new website clone	8.0
1843	Activation Wizard for CENTRAL 7 has Multiple "Other" selections.	8.0
1849	TcClient Error in External DB - Product Name Contains ' Single Quote	8.0
1864	UMSS Permissions: Administrators group is shown as having no permissions	8.0



1898	Incorrect Human Readable when barcodes saved in "NAME" view mode.	8.0
1915	Teklynx Central Print rotation not always applied	8.0
1932	Re-design Filters page to leverage Print API with updating of grids (DEFECT)	8.0
20175	TC7.0 Labelnet Admin site: Reprint configuration page: No confirmation when saving changes	8.0
20180	Local print failed to work with printer models based on PE.prn	8.0
20181	Label of specific version remains available for SENTINEL jobs even if it doesn't exist any more	8.0
20190	TCAdmin. External DB. When changing the option "Work Order", a message should be displayed that 'Labels SQL' need to be regenerated	8.0
20396	Printing Interface: Realize Tab button flow on PrintPage	8.0
20412	TEKLYNX CENTRAL 7 remote CODESOFT 2022.00.01 clients do not start.	8.0
20479	SENTINEL printer licensing ignored during true reprint	8.0
20480	Local thermal printing produces invalid LA history data	8.0
20492	Missing information in the audit trail when assigning labels to product in TCADMIN	8.0
20493	No audit trail when user login to TKCENTRAL or TCADMIN	8.0
20546	No audit trail when changing variable definition in TCADMIN	8.0
20569	Licensing. Trial. Add several printers and electronic documents to the trial version of Codesoft (for TC and LAS)	8.0
20577	TCAdmin. User Logic. Search by User's Group does not work	8.0
20578	Unable to terminate a session in the UMSS admin tool	8.0
20582	TC7.0 UMSS Permissions: Administrators group is shown as having no permissions	8.0
20583	Logon UI page: Does not load options after page reload.	8.0

[Back to Menu](#)

## TEKLYNX CENTRAL 7 New Features, Improvements and Fixes

## TEKLYNX CENTRAL 7.0

Task	New Features and Improvements	Version
72952	Improve CENTRAL 6.0 Printing Interface Admin Guide for 7.0	7.0
70347	Remove Ability to Add/Remove Variables within Labels Section of TCADMIN	7.0
54726	TKCENTRAL - Manage Connections	7.0
57094	<b>NEW</b> Ability to select CENTRAL, CENTRAL CFR or CENTRAL GHS upon install.	7.0
67410	<b>NEW</b> Add TEST Label Print Function to CODESOFT/CENTRAL	7.0
57096	<b>NEW</b> Auto save labels locally when you detached from LA	7.0
58177	<b>NEW</b> Add horizontal and vertical adjustment options in the printing interface of CENTRAL.	7.0
58181	<b>NEW</b> Allow for the database redirect of any site via InstallDB tool	7.0
58178	<b>NEW</b> Allow for TEKLYNX CENTRAL removal to happen via Add/Remove Programs instead of Start Menu Option.	7.0
72417	Implement TC Sync Service enhancements	7.0
67716	<b>NEW</b> Adding a Comment to the Reprint of TKCENTRAL	7.0
67780	<b>NEW</b> Ability to require a comment to be entered when selecting Reprint	7.0
58733	Local Print Expectations and Improvements for Administration/Licensing Control.	7.0
69018	Print page redesign	7.0
66196	<b>NEW</b> TC6.1: the print to PDF function should be controlled by the license addon.	7.0
64343	TEKLYNX CENTRAL performances scalability depending on usage	7.0
64307	<b>NEW</b> Add a preview button in LABELNET for TEKLYNX CENTRAL cloud printing.	7.0
64306	<b>NEW</b> Ability to define a quantity for each record selected in LABELNET + select/unselect button	7.0
64285	<b>NEW</b> Allow TC printing multiple labels on the same page when using the local print	7.0
64282	<b>NEW</b> Allow printing multi-page labels through local print	7.0
63519	Currently it is difficult to identify all of the TKCENTRAL application minor versions	7.0
58192	<b>NEW</b> Add the ability to download the label as a PDF as an option for the CENTRAL printing interface	7.0
58173	<b>NEW</b> Ability to change quantity of label printed for each label returned when using print all	7.0
55875	<b>NEW</b> Restrict LA options within File > LABEL ARCHIVE based on user account or group.	7.0
55873	<b>NEW</b> Second search or filter box on interface	7.0

55872	Make print interface of CENTRAL look the same regardless of whether you use External DB or "regular" way	7.0
55871	<b>NEW</b> Ability to set default quantity for a returned label, but still change value according to database record	7.0
47905	<b>NEW</b> Ability to download a PDF of the printed labels	7.0
46287	<b>NEW</b> Make silent installation to work with Configuration Tool	7.0

Ticket ID/ Defect ID	Fixes	Version
70374	Deployment fails if installation softwares are already present in local folders	7.0
65784	CODESOFT can't be used with LAS on client Workstation	7.0
65671	Printing Interface. Print PDF. If the 'Quantity' is greater than 1, then several 'print' records are created in the LAS history, instead of one	7.0
63809	Printing Interface. If the user does not have permission to print, but he tries to print the label, a record is created in the reprint	7.0
65735	CC. If you try to log into the CC as Manager, then try to log in as a Administrator (without restarting the CC), Administrator will not be able to log in	7.0
64238	Printing Interface. Adding a newly created label. Allow the addition of such a label without re-selecting the category (when the 'Valid from' date and time is appropriate)	7.0
63810	Printing Interface. If the value of the variable contains characters (<>), then printing gives an error. The same error is thrown when trying to add this label to the queue	7.0
45172	Check-in comments erased when saving a draft label	7.0
70798	Printing interface. On Windows Server 2022 'Print' button is not appeared.	7.0
76435	Printing Interface. Local Print. Sentinel allows you to print to local printers in case the licenses are exhausted	7.0
64400	Update TC user groups permission profiles	7.0
71498	Counter value is unpredictable for Test Printing	7.0
70811	TCADMIN: fail to add labels when more than 1000 labels are archived within a category	7.0
72038	Failed to assign products to workorder if there are lots of products in DB	7.0
72719	Drop down lists on Print page require paging for proper big data visualization	7.0
72769	TC6.0 Guide for manual installation of applications on workstation fails.	7.0
71828	LA Admin: Import Database, double-click causes category to display as unselected even when it is selected	7.0

71881	Inconsistency between Web Access and Admin tool when using options "Allow users to approve their own labels" or "Allow comment when check-out as Draft is used."	7.0
75049	LA user has not enough rights to open a label temporally	7.0
74679	Migrate to v.2022.01 - Bug 67400: Results of search for history and reprint data are not aggregated.	7.0
74705	Migrate to v.2022.01 - Bug 74380: LA client History dialog - dropdown width does not fit max variable name	7.0
74712	Wrong message in case connection lost	7.0
74759	Report generation: validation issue of the "Total printed" as search criteria	7.0
75893	Metadata is not added in case of CheckOut as Draft	7.0
76109	Unable to add label in TC Admin Data configuration	7.0
76623	Print button is not shown on Approval Request dialog	7.0
76730	Log to MSGS warning that max number of connections reached	7.0
76791	LAS not able to save document in draft category	7.0
76888	User can delete category with document(s) in use by TC	7.0
76957	UI localization issues	7.0

[Back to Menu](#)

## TEKLYNX CENTRAL 6 New Features, Improvements and Fixes

### TEKLYNX CENTRAL 6.0

Task	New Features and Improvements	Version
60457	<b>NEW</b> License the ability to use local printing with CENTRAL	6.0
52578	<b>NEW</b> Ability to select the printer and use local print while doing a true reprint through the website.	6.0
51043	<b>NEW</b> Click Print web enhancements	6.0
46631	<b>NEW</b> Store the list of the deployed workstations	6.0

42513	<b>NEW</b> Manage to a printer through CENTRAL	6.0
42517	<b>NEW</b> Rewrite MMC snap-ins as Windows Forms application	6.0
45130	<b>NEW</b> TLS 1.2 Encryption Methods	6.0
47833	<b>NEW</b> Rebuild LAWEB and add a feature to request a new label	6.0
58729	<b>NEW</b> The ability to configure the external DB to restrict variable input by min length, max length, and and masks like the standard interface	6.0
54009	<b>NEW</b> Makes TEKLYNX CENTRAL compatible with Single sign on authentication (SAML V2.0 , OAuth ...)	6.0
55876	<b>NEW</b> Using image on tcadmin for custom GUI messes with ability to set message box text as red or formatted	6.0
56073	<b>NEW</b> Migrate LAS and UMSS from .Net Remoting to gRPC	6.0
58174	<b>NEW</b> Add clear after print option per variable for LABELNET	6.0
56865	<b>NEW</b> Check out Final document as Draft.	6.0
45459	TEKLYNX CENTRAL Mobile App Does Not Consume a License	6.0
49627	LocalPrint Plugin installation requirement to be conditional based on Local Print and/or Workstation logic enabled	6.0
46419	Remove need for local print plugin when local printing, workstation logic, and workstation variable are not in use	6.0
42515	Label 'Approvers' should not consume an ACDesign license	6.0
42516	Improve CENTRAL-SENTINEL Integration: get label info and perform printing via Sentinel web service	6.0
45173	All Windows authentication screens have the option to prompt for a windows password	6.0
45312	File>Label Archive>Connect performs UMSS/AD Group link check	6.0
45874	Create a constraint between LABEL ARCHIVE.dbo.tblDocuments and LABELNET.dbo.Labels	6.0
46763	MSGS user activities logging: audit trail enhancements	6.0
48427	Make the preview in LABEL ARCHIVE higher quality.	6.0
47831	Option to force windows password in every interface in which you authenticate.	6.0
47613	Printer aliases not displayed in TKCentral TCAdmin printer logic	6.0
52560	Test Print Watermark - pull from LABEL ARCHIVE settings	6.0
54004	Add an audit trail for configuration changes that are made within TCADMIN / LAS	6.0
55877	Wrong label is selected on checkout when using sort	6.0
58179	Resolve Common Services Error on Install when NO Trial available	6.0

58188	TEKLYNX CENTRAL License Manager should be option within Start menu	6.0
58189	Prompt for CENTRAL activation after install	6.0
58190	Remove license managers/activation screens for all other software with CENTRAL.	6.0
58005	Track all changes in LABEL ARCHIVE ADMIN	6.0

Ticket ID/ Defect ID	Fixes	Version
46310	Services cannot start when user name contains spaces	6.0
46401	TC5.0: Installer components are not removed	6.0
46998	Fix "License expired" English message	6.0
48491	LA categories permissions unchecked while creating user group	6.0
50733	TKCENTRAL 5 CAN'T INSTALL CLIENT CODESOFT & LA ON W10	6.0
53814	Local Print Tool breaks when using SATO drivers due to degree symbol in User.ini file	6.0
59876	Label Archive connection from under Codesoft is case sensitive	6.0
60198	Move ClickPrint mobile applications authentication for IdentityServer	6.0
45132	Reprint preview does not accurately reflect the actual reprint	6.0
45802	Uninstall should not remove configuration files	6.0
47198	Allow Users to Change Password from Print Interface	6.0
48518	ACDesignUsers name changes and no one can access CODESOFT	6.0
54295	Transfer True Reprint functionality from TC 5.1 Post Release Fixes 3 to TC 6.0	6.0
58180	InstallDB tool does not create application pools properly when adding additional sites	6.0
42513	Manage to a printer through CENTRAL	6.0
47445	Respect time zones for a global deployment	6.0
47504	Addition to release notes. "It is recommended that the application for TEKLYNX CENTRAL is dedicated to TEKLYNX CENTRAL and no other applications run on this server"	6.0
55308	Unable to export documents to MDB database size of > 300 Mb	6.0
60496	Empty document name on checkout when using sort	6.0
55999	TC 5.1 installer failed to adjust the Firewall settings on German Windows 2019 server	6.0
50479	Case sensitivity issue on Oracle database	6.0
58159	Meta data problem	6.0

58187	Currently can end LA connection to SENTINEL via LA Admin	6.0
58204	Ability to add/modify/delete categories from LABEL ARCHIVE Administration	6.0
58212	Meta data issues when the "same" label exists in multiple categories and is deleted	6.0
58546	version numbering starts from 0 instead of 1	6.0
60042	Check out. In case user does not have Query permission to the root Codesoft category - the form will open, but the set of tabs in it will be incorrect	6.0

[Back to Menu](#)

## TEKLYNX CENTRAL 5 New Features, Improvements and Fixes

### TEKLYNX CENTRAL 5.1

Task	New Features and Improvements	Version
	<b>NEW Command Center</b> – New Command Center Look & Feel	5.1
47198	<b>NEW</b> Allow Users to Change Password from Print Interface	5.1
42517	<b>NEW</b> Rewrite MMC snap-ins as Windows Forms application	5.1
45130	<b>NEW</b> UMSS database connection now supports TLS 1.2 Encryption Methods	5.1
45173	<b>NEW</b> All Windows authentication screens have the option to prompt for a windows	5.1

	password	
46763	<b>NEW</b> MSGS user activities logging: audit trail enhancements	5.1
47831	<b>NEW</b> Option to force windows password in every interface in which you authenticate	5.1
45802	Uninstall should not remove configuration files	5.1
46310	Services cannot start when user name contains spaces	5.1
46419	Remove need for local print plugin when local printing, workstation logic, and workstation variable are not in use	5.1
45312	File>Label Archive>Connect performs UMSS/AD Group link check	5.1
48427	Make the preview in LABEL ARCHIVE higher quality	5.1
48491	LABEL ARCHIVE categories permissions unchecked while creating user group	5.1

Ticket ID/ Defect ID	Fixes	Version
52528	Problems with reprinting of print jobs made in earlier TC versions	5.1
52527	LAS: Upgrade from LAS 2019. Error if open HistoryData dialog (from History dialog) for a print job which was printed in LAS 2019	5.1
52526	LAS: "Attempted to read or write protected memory." during printing a Label Details report (on Check-out dialog -> Details tab)	5.1
52525	LAS: System crashes during "Export Drawings" (on Check-out dialog) for labels with variables without Max length set	5.1
52524	Problems with deleting product and deleting label associated with product (Printing Interface Administration)	5.1
52523	LAS: User can print and check-out a previous final version even if have no rights to perform it (only for documents which name contains special characters)	5.1
52522	LAS: The error is shown during password confirmation on Reprint (if enabled in UMSS properties - "Password confirmation is required for critical operation")	5.1

## TEKLYNX CENTRAL 5.0

Task	New Features and Improvements	Version
	<b>NEW SSL/HTTP support</b> added to LocalPrint plugin	5.0
	<b>NEW External DB mode:</b> SQL Views support added	5.0
	<b>NEW True reprint behavior:</b> this feature is available for server-side reprint, however	5.0



	LocalPrint jobs will have old static preview (non-true reprint)	
RTC5.0-2.2-004	<b>NEW</b> When associating a label with a product it should respect the order that the variables are configured in CODESOFT after they are imported into CENTRAL as well as all the min, max, mask, and pick lists settings.	5.0
RTC5.0-2.2-006	<b>NEW</b> The ability to install a second TCADMIN and TKCENTRAL webpage and DB. Feature is managed by Application Configuration tool launched during installation or later. It's enabled by the following command line parameters: c:\Program Files (x86)\Teklynx\Common\InstallDB.exe" /mode:cloneweb.	5.0
RTC5.0-2.2-007	<b>NEW</b> The ability to direct CENTRAL to look to a new DB server or DB's by changing 1 location, not many spots. This change is for SQL Server only. Feature is managed by Application Configuration tool launched during installation or later.	5.0
RTC5.0-2.2-015	<b>NEW</b> Implement statistics dashboard in Command Center displaying: Top 3 most active users based on the quantity of print requests. Top 3 most active printers and the quantity of labels printed. Top 3 most active products or work orders.	5.0
RTC5.0-2.2-016	<b>NEW</b> The ability to have a reprint through CENTRAL that functions the same as the reprint through LABEL ARCHIVE. This would be a true reprint, not a re-request.	5.0
RTC5.0-2.2-011	Include the following customers' patches: 1. Deleting UMSS sessions for UMSS-MSGs Administration Snap-in and remote CODESOFT if requests from these apps have not being processed more than 5 minutes by default. 2. Deleting UMSS session from UMSS-MSGs Snap-in releases the appropriate license. 3. Administrator user does not consume license on server side to let Command Center be launched anyway. 4. UMSS user groups can be cloned via UMSS-MSGs Snap-in. 5. Reprint for External Database. 6. Reprint history only for current user. 7. Reprint with CODESOFT control variables. 8. Allow "When Printed variables" modification on External Database Reprint.	5.0
RTC5.0-2.2-017	Make the SQL DB's on the back end of CENTRAL work with SQL Replication. This only has to be 1-way replication (transactional replication), no need in bi-directional replication.	5.0
RTC5.0-2.2-040	Support upgrades from any version 4.0 or above	5.0
RTC5.0-2.2-047	Add "Double entry verification feature" for variables on Print page to comply of CFR21 part 11. Section "6" says that for critical data entered manually there should be an additional check on the accuracy of the data	5.0
RTC5.0-2.2-050	The ability to require a password for a user to be able to generate a reprint. This would need to be incorporated in both the browser reprint in which you are currently redesigning and directly in CODESOFT. The authentication would need to be with their UMSS or AD account. NOTE: Password is not requested for Local Reprint jobs.	5.0

RTC5.0-2.2-051	Copied from LAS 2017 MRD: Ability to rename a folder in LA	5.0
RTC5.0-2.2-052	Ability to configure an input mask in a variable just like you can in CODESOFT and standard mode, but while using the external DB feature	5.0
RTC5.0-2.2-053	Windows auth login with manual password entry. Login will be stopped on following error codes returned by domain controller: ERROR_PASSWORD_EXPIRED 1330 ERROR_TIMEOUT 1460 ERROR_LOGON_FAILURE 1326 ERROR_ACCOUNT_DISABLED 1331 ERROR_INVALID_DOMAIN_STATE 1353 ERROR_NO_SUCH_DOMAIN 1355	5.0
RTC5.0-2.2-054	Tags enhancements: tags lists with adjustable default settings	5.0
RTC5.0-2.2-055	Searching over labels using variables as lookup parameters. CODESOFT should add variables metadata on Check In	5.0
RTC5.0-2.2-057	LocalPrint should support UNICODE charset	5.0
RTC5.0-2.2-058	Use the user and workstation names from the printing interface on the label that is printing (applied for both printing and preview)	5.0
RTC5.0-2.2-059	Mobile ClickPrint application will have same Product/Workorders/Labels workflow as regular Printing Interface web site. NOTE: Windows Auth is not possible for Mobile Application because iOS/Android devices cannot be in Windows Domain.	5.0
RTC5.0-2.2-060	To have an option setting Print Quantity to 1 in External DB mode. Currently it's controlled by SQL query	5.0

Ticket ID/ Defect ID	Fixes	Version
44597	TC 5.0 RC1: When printing is made on a local printer, the reprint doesn't work and local print button is missing.	5.0
44596	TC 5.0 RC1: The preview is no longer displayed in the reprint interface	5.0
44593	TC 5.0 RC1: Option "Clear Label Quantity" has a dependance with option "Mapped Variables"	5.0
41310	TC 5.0. TCAdmin site. Add label. Current category is not marked	5.0
39751	Add the possibility to populate label variables with workorder and product selected	5.0
39750	TKCENTRAL 4.2 : Customer CAWE is having problems with web print interface	5.0
39747	Manage the right to invalidate a validated version of a label as a standard LAS right	5.0

39746	Can't configure printer in local Print mode if not running IE with run as admin	5.0
39744	Connection to LAS can be slow due to digital signature	5.0
39743	It should be possible in Label Archive to search for a specific jobname using wildcard characters like *, %, ? ...	5.0
39742	Problem when clicking in the history tab of the action field window of the designer	5.0
39741	The local print client should be available as an msi package	5.0
39740	The email is not imported when adding a windows user from the select user dialog	5.0
39739	The import dialog of UMSS takes very long time to update on large network	5.0
39737	It is possible to create a new draft version of a label while it is already submitted for approval.	5.0
39736	Label Variables are case sensitive in TKCentral	5.0
39735	It would be nice to have a button save/cancel to validate changes made on the variable field values.	5.0
39734	There is no way to delete a variable that has been added with new button in TCADMIN interface on the label page	5.0
39733	TC 5.0 (UMSS): Command Center registration failed after license deactivation.	5.0
39725	Wrong default CODESOFT folders after install	5.0
39724	Error occurs on first request to TC Web Api	5.0
39723	TC 5.0 (External DB): Variable data source remains active after External DB data source changed.	5.0
39722	TC 5.0 (External DB). Application variable type is not converted to corresponding database type.	5.0
39721	TC 5.0 (External DB): Query including column name with space character inside failed to be parsed.	5.0
39720	TKCentral error on opening label at preview	5.0
39719	TKCentral wrong labels printed after upgrade	5.0
39073	TC 5.0 Installation. If the user uses the button 'Back' on the form 'Ready to install', then the back jump is incorrect	5.0
37530	TC 5.0: LocalPrint plugin doesn't work on Firefox 57	5.0
37529	TC 5.0: Enable User logic and check the option to "only work with printers", it will not return any products for any user.	5.0
37431	TC 5.0 It's required to run internet explorer under admin account to change and save the printer configuration and install/update printers	5.0
35704	TC 5.0. Printing Interface. Reprint. Preview function works twice if user try to select	5.0

	Reprint image	
35703	TC 5.0. Printing Interface. Re-print. If label has no variables and user try to select it, incorrect message appears	5.0
35047	TC 5.0 "Select Workorder" popup is empty in case Workstation logic is enabled	5.0
32172	TC 5.0. DVD interface. Supplementary manuals. Small IE problem	5.0
31988	TC 5.0 (HostCommon): CS application properties are failed to be set after instance restart.	5.0
31976	TC 5.0 (Web Admin): Discard Reprint settings	5.0
31975	TC 5.0 (Printing Interface): Save button is visible and preview is updated on Print page if all variables have hidden status.	5.0
31921	TC 5.0 (External Database): "Clear variables after print" option with batch print operation.	5.0
31901	TC 5.0 (External Database): Local Print All using FILE port prints only single label	5.0
31840	TC 5.0 (LABEL ARCHIVE): LA service is stopped after license activation.	5.0
31665	TC 5.0 (UMSS): Frequent 'StillAlive' requests probably lead to increased memory consumption by SQL Server	5.0
31656	TC 5.0 (Printing Interface): Label print fails if customized min length contradict one imported from CODESOFT label.	5.0
31554	TC 5.0 (LABEL 91ARCHIVE): LA client cannot log on server if LAS application is marked for re-registration in UMSS database.	5.0
31543	TC 5.0 Installation -> Customer Information Form -> Messages about 'Organization/User cannot be empty' is not translated	5.0
31538	TC 5.0: request for Sentinel (upgrade from 4.5, SQL express). After restart - message appears 'An instance of the service is already running'	5.0
31532	TC 4.6 (Printing Interface). Message about Client Plugin version mismatch is absent on Login page.	5.0
31349	TC 5.0 (Local Print): Local printer is not added properly if browser is not launched with administrator permissions.	5.0
31299	TC 5.0 (Web Admin. External DB): Products grid paging leads to application inaccessibility	5.0
31876	TC 5.0 (Printing Interface): Current localization for web application should be saved on client side.	5.0
31902	TC 5.0 (Printing Interface): Several tables in LABELNET database have no unique constraint required by application.	5.0
31608	TC 5.0 (Printing Interface). Label is not printed properly on local Windows printer if current label unit is Inch.	5.0

40133	Timeout Period for LA clients -- TKX-117940-N6F5	5.0
39749	Add a triage option to display the labels in different order on page Labels of TCADMIN	5.0
39748	Manage the right to invalidate a validated version of a label as a standard LAS right	5.0
39731	Enhancement: Add a confirmation popup window when using the Save button in Labelnet Admin interface > connections > printer logic	5.0
39730	It should be possible to associate multiple labels with a product at the same time	5.0
39729	Use the parameter of the CODESOFT variables to setup the variables in TCADMIN	5.0
39728	It should be possible to search for some labels in page Labels of TCADMIN	5.0
39726	Allow SQL databases to be created in advance before the TC installation starts	5.0
39718	Problem with labels that have been validated but with a date of validity	5.0
31688	TC 5.0 (Local Print): Development environment: Migration to Visual Studio Code	5.0
31560	TC 5.0 LAS dependencies in TC	5.0

[Back to Menu](#)

## TEKLYNX CENTRAL 4 New Features, Improvements and Fixes

### TEKLYNX CENTRAL 4.7

Task	New Features and Improvements	Version
RTC4.7-2.2-005	<b>NEW</b> The ability to create a second webpage that has no logic, it simply allows you to select and print a label. Similar to click print, but available through the web	4.7
RTC4.7-2.2-021	<b>NEW</b> Make printer logic and user logic an option to use in external DB mode	4.7

RTC4.7-2.2-030	<b>NEW</b> The ability to push the printing plugin install in the same fashion as you do the client install of CODESOFT. Today the client installs 3 components, CS, LAC, and the plugin for printing. I want that to stay the same, but have the option to just push out the local print plugin.	4.7
RTC4.7-2.2-033	<b>NEW</b> An option in LA that will remove the allowance of "self-approval". Making it so users can not approve their own labels.	4.7
RTC4.7-2.2-045	<b>NEW</b> Introduce Android and iOS mobile applications similar to CODESOFT ClickPrint	4.7
RTC4.7-2.2-001	Make the "Use auto search in Product/Workorder box" work. The expected functionality would be to have it activate or deactivate the autocomplete in the search box and when activated, allow it to reflect the amount of items that return in the product or workorder box.	4.7
RTC4.7-2.2-008	Fix the message. Steps to replicate: When a user without Administrative rights attempts to log into Central Command Center. Message received: "It is not enough access permissions." Suggested change: "That User Account does not have permission to access this feature".	4.7
RTC4.7-2.2-009	Delete printer button in CENTRAL TC ADMIN page should prompt a user to remove all associations from any logic used elsewhere. A query to search all objects in use by that printer should be easy enough so that a user does not have to search through everything on their own manually.	4.7
RTC4.7-2.2-010	Customer quote: "Associates in my distribution center may have a difficult time remembering product names due to the other tasks/items they need to remember to perform their job tasks. Maybe this can be a drop down to show the products they have access to when searching for labels?" This would simply make the product or workorder box a dropdown in standard mode. This would be bad for users with many products or workorders, but very useful for many of our clients. This will need to be a configurable option.	4.7
RTC4.7-2.2-012	The option to have the Printing Interface remember the last printer that was used. We need this to be a configurable option on the admin page. Note: last printer value is stored for specific user.	4.7
RTC4.7-2.2-013	If you have the print queue option turned on, and the regular print button, you cannot print just 1 label design using the regular print button. It forces the user to have to add a single label to the queue, and then print the entire queue to print just 1 label.	4.7
	The print button should function for individual requests if enabled on the site to go along with print queue option	4.7
RTC4.7-2.2-014	When external DB is selected, it greys out all the features that are not usable anymore	4.7
RTC4.7-2.2-019	1) Removing a label from a list of products, then re adding it causes the lab file to go to the bottom of the list. It should either go to its original position or there should also be options	4.7

	for automatic sorting. 2) An option to drag the labels within the product to organize would be nice. Rather than using the arrows, or both.	
RTC4.7-2.2-020	Error Message Application Usage. Steps to replicate error message: Just after logging into system and launching Command Center. Services required may not have all fully started. Error Message Received: "Access is denied. Unable to perform UMSS connection. Unknown error" Suggested change to message: "Access is denied. Unable to perform UMSS connection."	4.7
RTC4.7-2.2-022	When preview is not enabled, it should remove the need to process the preview in the background	4.7
RTC4.7-2.2-023	When reprint is enabled, highlight the tab in use	4.7
RTC4.7-2.2-026	Customer would like to set a default printer in the local print plugin. So that they do not have to select it every time	4.7
RTC4.7-2.2-028	Customer would like to set a default printer in the local print plugin. So that they do not have to select it every time	4.7
RTC4.7-2.2-031	Add the UMSS user group copy patch as a default feature	4.7
RTC4.7-2.2-032	The ability to bind a user group in UMSS with a USER Group in Active directory. This will allow us to create just 1 association, group to group, and have the system be manages all the way in AD from there on out.	4.7
RTC4.7-2.2-034	The ability to double click a label in label archive to check the label out of LABEL ARCHIVE	4.7
RTC4.7-2.2-035	A description field for each step of approval rule, displayable wherever approval rules are shown	4.7
RTC4.7-2.2-036	Remove SMA from interface	4.7
RTC4.7-2.2-037	Increase logout button size of web interface	4.7
RTC4.7-2.2-041	Let user to select data results merging mode when several TC logics are enabled. It should be configured on Options screen: "Union" or "Intersection" will be applied to combine results of different logics datasets.	4.7
RTC4.7-2.2-043	LAS: the ability to move a label from one folder to another	4.7
RTC4.7-2.2-044	Display locked/not-locked status of each user in the UMSS Management Console screen	4.7
RTC4.7-2.2-046	UMMS permissions fix for categories: after adding a new category actual permissions checkboxes are not enabled	4.7

Ticket ID/ Defect ID	Fixes	Version
31935	TC 4.6. Connections (web). If the admin deleted the connection, the user will anyway be able to work with Printing Interface	4.7
31872	TC 4.6 (Codesoft). Codesoft is crashed if the user is loggen to LAS (2 cases)	4.7
31689	TC 4.6 (Printing Interface, Web Admin): Custom logo is not available after guide-based version upgrade	4.7
31657	TC 4.6 (LAS). Check out window. The button Save behaves incorrectly when resizing	4.7
31533	TC 4.6 (Printing Interface). Client plugin is not installed as Chrome extension in a case of SSL communication.	4.7
31504	TC 4.6 Build10. Uninstall build 9 - install build 10: problems with license manager	4.7
25788	TC 4.60.00: Empty Naming values are saved to database as string with spaces	4.7
32217	TC 5.0 (Installation): Web applications for Printing and Admin Interfaces cannot be installed on IIS 10.0 (Windows 10)	4.7
24201	TC 4.5/TC 5.0: Inconsistent behavior of User Logic's "Apply to User Groups" option	4.7
24200	TC 4.5/TC 5.0: Local Printing is not working in case of Oracle-based installation	4.7
24197	TC 4.5/TC 5.0: UMSS registration failures (Version Upgrade from 4.0)	4.7
24196	TC 4.5/TC 5.0: Remote installation of CODESOFT from Command Center failed	4.7
32187	TC 4.6 (Command Center). Add info about .NET Framework 4.5 in remote installation window	4.7
32060	TC 4.6 (External DB): Workorder variable initialization leads to error message	4.7
32029	TC 4.6 (External DB): Print All: User-selected dataset values are not retained for selected label	4.7
32013	TC 4.6 (External DB): Queued Print Request failed to be created in External DB mode.	4.7
32011	TC 4.6 (External DB): Product/Workorder variables logic is not applied during Print All and Local Print All operations.	4.7
31971	TC 4.6 Reports. Fields TCUser and TCWorkstation are not filled	4.7
31953	TC 4.6 (External DB): Custom value in editable drop down list on Print page is not applied to preview.	4.7
31936	TC 4.6 (LAS 2015.02). Check out, History. etc. If the table is sorted by any column, the search does not work	4.7
31924	TC 4.6 (Version Upgrade): UMSS: Custom user groups from TC 4.5 are not available after upgrade	4.7



31820	TC 4.6 (Local Print): Chrome: Local Print features are not functional on Reprint page.	4.7
31691	TC 4.6 (Web Admin): Label Search doesn't work properly on Printer Logic tab.	4.7
31690	TC 4.6 (Local Print): Variables are not saved after local print on Print page.	4.7
31687	TC 4.6 (Printing Interface): Variables are cleared on Print page even if it is not allowed to modify them.	4.7
31686	TC 4.6 (Web Admin): Firefox: Administration website uses NPAPI plugin instead of dedicated add-on	4.7
31660	TC 4.6. UMSS. Permission 'Document in not valid state'. Change conditions (add 'state = Final' condition)	4.7
31658	TC 4.6 (Printing Interface): 'From Grid' variable status is conflicted with other available statuses on Print page.	4.7
31654	TC 4.6 Firefox crashes after Local print.	4.7
31653	TC 4.6 (Printing Interface): External variables search on Print page has not stable behaviour.	4.7
31539	TC 4.6 build 10. Folder 'TEKLYNX UMSS-MSGs 2015.02' was not removed during uninstallation process	4.7
31535	TC 4.6 build 11. Printing interface (firefox 48). "Load indicator" is displayed continuously	4.7
31506	TC 4.6 build 10. TCAdmin. GUI Customization. Problems with customer's company logo	4.7
31298	TC 4.6 TC Client Plugin does not work in Mozilla Firefox for Windows (64 bit)	4.7
29865	TC 4.6 Command Center - Connected Users. Instead of real user names, displayed their designation	4.7
26784	TC 4.6 Remote installation doesn't work if user is not 'Domain Administrator'	4.7
31677	TC 5.0 (Services): Services should use ad hoc user instead of built-in Administrator	4.7
31672	TC 5.0 (Installers): Installer screen for service user configuration is required.	4.7
31667	TC 4.6 (Printing Interface): Date format validator is missing for variable value.	4.7
31306	TC 4.6 (Command Center): LA client is not installed remotely if Command Center is not launched as administrator.	4.7
31288	TC 4.6 (Command Center): Remote installation could not be performed on the machine from the trusted domain.	4.7
31685	TC 4.6 (Printing Interface): Infinite printing could be uncontrollable after logging out or any other postback action.	4.7
32019	TC 5.0 (Printing Interface): Intersection of Workstation, Printer and User logics should be applied on Print page.	4.7
32065	TC 4.6 (Web Admin): Review code handling retrieval of data from CODESOFT data link	4.7

	directory	
31861	TC 4.6: Integrate Shepherd patches into CENTRAL 4.6 release	4.7

## TEKLYNX CENTRAL 4.6

Task	New Features and Improvements	Version
RTC4.60.00-01/08	Multiple reports enhancements including new filters, fixes, optimization of big amounts of data and visualization	4.6
RTC4.60.00-10	Teklynx Central enhancement: filter label history for a particular TC user or TC workstation	4.6
RTC4.60.00-12	When the label is in approval process, display information about next step	4.6
RTC4.60.00-13	When creating an approval rule, a setting is added in Label Archive Client snap-in to specify that the user who created the label will receive an email when the label is approved or denied	4.6
RTC4.60.00-13	Make sure it's possible to use LABEL ARCHIVE with UAC turned on	4.6
RTC4.60.00-18	It should be possible to filter LAS history by Job name using wildcard characters (it is required to specify full name) e.g.: part1*part2, ?part3	4.6
RTC4.60.00-20	Enhancement: The report uses a grey background color that makes the reading difficult after printing on certain printers	4.6
RTC4.60.00-21	Fix: If user selects only Date / Time / User to generate the report (information that is not depend on the label) and none of the label variables, the report generated does not reflect this selection whatever the label versions	4.6
RTC4.60.00-22	Report formatting fixes	4.6
RTC4.60.00-25	Fix: When adding a Windows user in UMSS, the search box does not allow searching user by the last name specified in the Active Directory but just by the user logon name	4.6
RTC4.60.00-26	Fix: When adding a Windows user in UMSS, the information for the user: firstname, last name, phone, mobile, email and locked, should be automatically updated in the add user dialog box	4.6
RTC4.60.00-09	Admin doesn't consume license on server but it's not possible login from remote CODESOFT	4.6
RTC4.60.00-14	Remove digital signature check in TEKLYNX CENTRAL, LAS and UMSS components	4.6
RTC4.60.00-	It's possible to install TEKLYNX CENTRAL with UAC turned on	4.6

15		
RTC4.60.00-17	LocalPrint distribution via GPO (avoid granting administrative rights on each client PC)	4.6
RTC4.60.00-19	LocalPrint plugin compatibility for modern browsers with HTML5: Chrome and Firefox recent versions without ActiveX support	4.6
RTC4.60.00-24	Ability to specify that a specific version of a label is no longer valid. Once that a version of a label has been invalidated, it should no longer be possible to print it, even if it is a final version.	4.6
RTC4.60.00-27	The email content is configurable with dynamic data that are relevant with the approval process	4.6
RTC4.60.00-28	Implement Heinrich Kopp patch in TC 4.6. Bring back Connections screen in External DB mode allowing user to set Printer/User logic	4.6
	Include all External DB patches to TC 4.6 (mostly Shepherd requests)	4.6
	Infinite Print option was removed	4.6

Ticket ID/ Defect ID	Fixes	Version
25788	TC 4.60.00: Empty Naming values are saved to database as string with spaces	4.6
26784	TC 4.6 Remote installation doesn't work if user is not 'Domain Administrator'	4.6
29865	TC 4.6 Command Center - Connected Users. Instead of real user names, displayed their designation	4.6
31298	TC 4.6 TC Client Plugin does not work in Mozilla Firefox for Windows (64 bit)	4.6
31350	TC 4.6 (WebAdmin. External DB): "Like" operator is ignored during SQL query processing on Filters page.	4.6
31504	TC 4.6 Build10. Uninstall build 9 - install build 10: problems with license manager	4.6
31506	TC 4.6 build 10. TCAdmin. GUI Customization. Problems with customer's company logo	4.6
31532	TC 4.6 (Printing Interface). Message about Client Plugin version mismatch is absent on Login page.	4.6
31533	TC 4.6 (Printing Interface). Client plugin is not installed as Chrome extension in a case of SSL communication.	4.6
31535	TC 4.6 build 11. Printing interface (firefox 48). "Load indicator" is displayed continuously	4.6
31539	TC 4.6 build 10. Folder 'TEKLYNX UMSS-MSGs 2015.02' was not removed during uninstallation process	4.6

31653	TC 4.6 (Printing Interface): External variables search on Print page has not stable behaviour.	4.6
31654	TC 4.6 Firefox crashes after Local print.	4.6
31657	TC 4.6 (LAS). Check out window. The button Save behaves incorrectly when resizing	4.6
31658	TC 4.6 (Printing Interface): 'From Grid' variable status is conflicted with other available statuses on Print page.	4.6
31660	TC 4.6. UMSS. Permission 'Document in not valid state'. Change conditions (add 'state = Final' condition)	4.6
31686	TC 4.6 (Web Admin): Firefox: Administration website uses NPAPI plugin instead of dedicated add-on	4.6
31687	TC 4.6 (Printing Interface): Variables are cleared on Print page even if it is not allowed to modify them.	4.6
31689	TC 4.6 (Printing Interface, Web Admin): Custom logo is not available after guide-based version upgrade	4.6
31690	TC 4.6 (Local Print): Variables are not saved after local print on Print page.	4.6
31691	TC 4.6 (Web Admin): Label Search doesn't work properly on Printer Logic tab.	4.6
31820	TC 4.6 (Local Print): Chrome: Local Print features are not functional on Reprint page.	4.6
31861	TC 4.6: Integrate Shepherd patches into CENTRAL 4.6 release	4.6
31872	TC 4.6 (Codesoft). Codesoft is crashed if the user is loggen to LAS (2 cases)	4.6
31924	TC 4.6 (Version Upgrade): UMSS: Custom user groups from TC 4.5 are not available after upgrade	4.6
31935	TC 4.6. Connections (web). If the admin deleted the connection, the user will anyway be able to work with Printing Interface	4.6
31936	TC 4.6 (LAS 2015.02). Check out, History. etc. If the table is sorted by any column, the search does not work	4.6
31942	TC 4.6. Printing Interface. Local Print. Sometimes Local Print does not generate history records (in LAS DB) (unstable bug)	4.6
31953	TC 4.6 (External DB): Custom value in editable drop down list on Print page is not applied to preview.	4.6
31971	TC 4.6 Reports. Fields TCUser and TCWorkstation are not filled	4.6
32011	TC 4.6 (External DB): Product/Workorder variables logic is not applied during Print All and Local Print All operations.	4.6
32013	TC 4.6 (External DB): Queued Print Request failed to be created in External DB mode.	4.6
32029	TC 4.6 (External DB): Print All: User-selected dataset values are not retained for selected label	4.6

32060	TC 4.6 (External DB): Workorder variable initialization leads to error message	4.6
32065	TC 4.6 (Web Admin): Review code handling retrieval of data from CODESOFT data link directory	4.6
32172	TC 4.6. DVD interface. Supplementary manuals. Small IE problem	4.6
32187	TC 4.6 (Command Center). Add info about .NET Framework 4.5 in remote installation window	4.6

## TEKLYNX CENTRAL 4.5

Task	New Features and Improvements	Version
	<b>NEW</b> TC 4.5 has new <b>Licensing system</b> based on application groups. Please review TC_450_Licensing_Guide.pdf to learn about new licenses consumption	4.5
RTC4.50.00-01	<b>NEW</b> Windows Print Spooler is presented	4.5
RTC4.50.00-05	<b>NEW</b> Date type variables added	4.5
RTC4.50.00-06	<b>NEW</b> Language selection added in Command Center (English or French)	4.5
RTC4.50.00-07	<b>NEW</b> LocalPrint can be installed remotely via Command Center	4.5
RTC4.50.00-08	<b>NEW</b> CODESOFT, LA Client, LocalPrint can be installed remotely via Command Center using the list of PCs or IP addresses	4.5
RTC4.50.00-11	<b>NEW</b> Ability to kick user session in Administrative application	4.5
RTC4.50.00-12	<b>NEW</b> Batch printing feature	4.5
RTC4.50.00-14	<b>NEW</b> Ability to associate multiple labels with multiple printers in printer logic	4.5
RTC4.50.00-20	<b>NEW</b> Ability to associate printer with a label directly in Printer logic	4.5
RTC4.50.00-02/03	Licensing enhancements. Applications consume licenses instead of user groups. Learn more in TC_450_Licensing_Guide	4.5
RTC4.50.00-04	Print All button can be shown/hidden	4.5
RTC4.50.00-	Configure workstation logic to work with a similarly named or set of IP's or workstation	4.5

09	names. EXAMPLE. If your workstation name starts with USA, you can make it have access to US only labels.	
RTC4.50.00-10	Bunch of LocalPrint optimization patches is embedded in TC 4.5	4.5
RTC4.50.00-15	When browser is closed, the user is logged off	4.5
RTC4.50.00-17	Embed LocalPrint patches for Bella	4.5
RTC4.50.00-18	Customization GUI and logo fixes	4.5
RTC4.50.00-19	Product variable enhancements: split value in two parts. First portion of the number to lookup a product or label, and the second portion to populate the variable	4.5
RTC4.50.00-21	Max label name length enhancements	4.5
RTC4.50.00-22	Focus on product box after the login is complete	4.5
RTC4.50.00-23	The ability to enable and disable the autocomplete in the product box	4.5
RTC4.50.00-24	The Print All button should use the quantity typed into the quantity box	4.5
RTC4.50.00-27	TC 4.5 validates required IIS roles during installation	4.5
RTC4.50.00-31	Bugfixing: ACDesigners group that doesn't provide access to the history pane of the approval actions	4.5
RTC4.50.00-35	Possibility for the local print to accept https connections when browser is IE (for the moment it works with chrome and FireFox only)	4.5
RTC4.50.00-36	Preview image should load using the Selected Printer driver rather than the Teklynx Central Preview driver	4.5
RTC4.50.00-37	Include all Johnson patches to TC 4.5	4.5

<b>Ticket ID/ Defect ID</b>	<b>Fixes</b>	<b>Version</b>
BTC4.50.00-01	Optimize UMSS to browse big domains	4.5

BTC4.50.00-02	Permission fixes for History tab of User Actions dialog	4.5
BTC4.50.00-03	Ability to delete variable that was added via TC Administrative Interface	4.5
BTC4.50.00-04	Add save/cancel button on Variables dialog	4.5
BTC4.50.00-05	Remove case sensitivity of variables to match CODESOFT behavior	4.5
BTC4.50.00-06	It is possible to create a new draft version of a label while it is already submitted for approval	4.5
BTC4.50.00-07/08	Ability to install LocalPrint via Group Policy	4.5
BTC4.50.00-10	When working with WorkOrders it should be possible to configure TEKLYNX CENTRAL to associate a label variable with the WorkOrder selected and also with the Product selected.	4.5
BTC4.50.00-11	When an approval rule is configured for sending emails and when it is used on the check in of the label, it would be nice to automatically check the "email sending" option.	4.5

## TEKLYNX CENTRAL 4.2

Task	New Features and Improvements	Version
	<p>TEKLYNX CENTRAL 4.2 has the same features set as regular TEKLYNX CENTRAL 4.0 and presents enhanced External Database functionality.</p> <p>The use cases are explained in "TC_510_ExternalDB_Administrator_Guide" and "TC_510_ExternalDB_User_Guide" files on this DVD.</p>	4.2

Ticket ID/ Defect ID	Fixes	Version
17255	TC 4.0, TC 3.0 (Web Admin): Date is the static search criteria for Reprint page	4.2
19872	TC 4.0, TC 3.01, TC 3.01 CFR/GHS (Local Print ActiveX): ActiveX control is signed incorrectly, publisher could not be verified	4.2
19900	TC 4.0 (Installation): Unhandled exception during installation of Printing Interface	4.2
19915	TC 4.0 (Web Admin): NullReferenceException is thrown after logon attempt	4.2
19916	TC 4.0 (Web Admin): Processing error occurred when navigating to Labels page	4.2

19918	TC 4.0 (Web Admin): Top menu contains broken URLs	4.2
19925	TC 4.0 (Web Admin): Labels page: Unhandled exception - Attempt to add a value without having an existing pick list	4.2
19927	TC 4.0 (Web Admin): Pick Lists popup: Values datagrid is not cleared after deleting the pick list	4.2
19933	TC 4.0 (Web Admin): Connections page: Unhandled exception - Error page is loaded with enabled Workstation logic, User logic, or both	4.2
19941	TC 4.0 (Printing Interface): Login page: User Name field doesn't contain value with enabled Windows Authentication checkbox	4.2
19943	TC 4.0 (Printing Interface, GUI): Print page: Instant search results box is not properly displayed in Internet Explorer	4.2
19971	TC 3.01, TC 4.0: Localization issue: LABEL ARCHIVE service will fail to start if current system date format is not US-alike	4.2
20115	TC 4.0 (Installation): Printing Interface web applications won't install without IIS 6 Management Compatibility features (IIS 7/8)	4.2
20124	TC 4.0 (Printing Interface): Selected pick list's values are not printed or saved	4.2
20127	TC 4.0 (Web Admin): Visible UI bugs on GUICustomization.aspx	4.2
20128	TC 4.0 (Web Admin): GUI: Size of user controls on Labels.aspx page	4.2
20129	TC 4.0 (Web Admin): GUI: Login.aspx page in Internet Explorer 10	4.2
20131	TC 4.0 (Web Admin): GUI: Popup dimensions on several pages	4.2
20132	TC 4.0 (Printing Interface): GUI bugs on PagePrint.aspx	4.2
20135	TC 4.0 (Printing Interface): GUI: Page content is not visible when popup is displayed (Internet Explorer 9/10)	4.2
20137	TC 4.0 (Printing Interface): NullReferenceException is thrown when printing label with linked data source	4.2
20138	TC 4.0 (Web Admin): Controls on Connections page are active when correspondent logics are not enabled	4.2
20148	TC 4.0 (Web Admin): GUI: "Product variable" popup style	4.2
20149	TC 4.0 (Printing Interface): PagePrint.aspx: Preview popup is not displayed on the second call	4.2
20157	TC 4.0 (Installation): Printing Interface installation on Oracle 11g database failed	4.2
20640	TC 3.01, TC 4.0 (Printing Interface, Localization): Input file for SENTINEL is generated in ANSI encoding	4.2
20909	TC 4.0 Error occurred. Data configuration - > labels	4.2
20921	TC 4.0 (WEB ADMIN) Error appears on GUI Customization page	4.2



20922	TC 4.0 (WEB ADMIN) Header disappeared after changing customization	4.2
20923	TC 4.0 (WEB ADMIN) Unable to logut in IE 10	4.2
20929	TC 4.0 (Printing Interface) Under the search field smal dot is shown	4.2
20945	TC 4.0 (UMSS) Unable to create or edit user.	4.2
20946	TC 4.0 (Web Admin) GUI Customization - After we change logo font is changed to black.	4.2
20947	TC 4.0 (Web Admin) Text on login button in Russian language should be centered	4.2
20948	TC 4.0 (web admin) Combobox for language choose shown incorrectly	4.2
20949	TC 4.0 (web admin) GUI customization - Large images cannot be chosen as log. No warning or error displayed	4.2
20950	TC 4.0 (web admin) Work orders - Assign product popup - Search field should be a bit longer on the same line with combobox	4.2
20951	TC 4.0 (web admin) Labels - error appeared if we try to search label	4.2
20952	TC 4.0 (web admin) Default page is empty	4.2
20953	TC 4.0 (Web admin) Connections - Paging appeared after empty serach result	4.2
20955	TC 4.0 (web admin) Naming - Workstation tab was not changed in Data Configuratiopn -> Connections	4.2
20956	TC 4.0 (Web admin) Naming - Naming values should be loaded from cache instead of DB	4.2
20957	TC 4.0 (Web Admin) Data configuration - Connections - Printers order buttons does not work properly	4.2
20959	TC 4.0 (web admin) Data configuration - connections - Error appeared if we check both "Bind to Work orders" "Only apply to printers"	4.2
20978	TC 4.0 (Protection): Command Center does not update license status after activation. Refresh failed.	4.2
20982	TC 4.0 (Printing Interface): Print page: Preview operation is not stable	4.2
20985	TC 4.0 (Installation): LABEL ARCHIVE failed to start during installation and aborted the process	4.2
20986	TC 4.0 (Web Admin) Data Configuration - Work orders - Search field becomes uneditable after search	4.2
20987	TC 4.0 (Web Admin) Data configuration - connections - Printer logic - Search process never ends if we search fake label	4.2
20998	TC 4.0 (Installation) Database creation error during installation with oracle DB	4.2
21002	TC 4.0 (Protection): Incorrect license expiration tracking behavior in Command Center	4.2

21014	TC 4.0 (Web Admin) GUI Customization is not localized for French version	4.2
21016	TC 4.0 (Local printing plugin) Local printing plugin should be renamed to "TEKLYNX CENTRAL CLIENT PLUGIN"	4.2
21017	TC 4.0 (Printing Interface) Settings for printer does not work correctly on client workstation	4.2
21026	TC 4.0 (Printing Interface) Workstation should not be proposed to choose if workstation logic is turned off	4.2
21032	Tc 4.0 (Web admin) (Printing Interface) No redirect if user logged in and open in new window one of sites.	4.2
21039	TC 4.0 (Printing Interface) Unable to preview document label.	4.2
21040	TC 4.0 (Printing interface) MessageBox board should not appear if no text inputted in admin area	4.2
21047	TC 4.0 (Printing interface) "Print all" does not work properly.	4.2
21054	TC 4.0 (Printing interface) Work orders cannot be found on reprint page	4.2
21055	TC 4.0 (Printing interface) Local print does not work	4.2
21080	TC 4.0 (Label archive client) Check in as dialog - button is not shown	4.2
21112	TC 4.0 (external database) Error appear after we search work order on printing page	4.2
21118	TC 4.0 (external database) Product search does not work properly on printing page	4.2
21126	TC 4.0 (external database) Print all button does not work properly	4.2
21127	TC 4.0 (external database) Connections - printer logic - list of labels shown incorrectly	4.2
21145	TC 4.0 (printing interface) Message box area is showing incorrect text after refreshing the page	4.2
21174	TC 4.0 (external data base) paging on products page does not work properly.	4.2
21186	TC 4.0 (external database) List of labels shown incorrectly	4.2
21195	TC 4.0 (Printing Interface): Custom logo is not displayed on Printing Interface website	4.2
21198	TC 4.0 (Printing Interface): Incorrect behavior of tracking print requests with variables from external source	4.2
21199	TC 4.0 (External Database): Error message displayed when WorkOrders, Products or Labels page is requested	4.2
21202	TC 4.0 (External Database): Error occurs when adding existing filter on ProductsOLEDB.aspx page	4.2
21203	TC 4.0 (Protection): LABEL ARCHIVE service periodically stops (using SDX demo dongle)	4.2
21246	TC 4.0 (Printing interface) Message box border is visible when option is disabled	4.2

21250	TC 4.0 (Web Admin; Printing interface) Session expired after 6 hours.	4.2
21349	TC 4.0 (Printing interface): Preview of label is taking based on latest version from LAS DB	4.2
21413	TC 4.0 (External Database): "Hide Printed Labels" does not work with external databases	4.2
21414	TC 4.0 (External Database): Product variables are not populated with product value from external datasource	4.2

## TEKLYNX CENTRAL 4.0

Task	New Features and Improvements	Version
R-TC301-0001	<b>NEW</b> Use of variables Pick lists in the Internet Printing Interface	4.0
R-TC301-0002	<b>NEW</b> Variables input masks functionality	4.0
R-TC301-0003	<b>NEW</b> The ability to have a print page message box display in the Printing Interface. This message box can be used to show instructions.	4.0
R-TC301-0005	<b>NEW</b> "Automatic site log off" feature	4.0
R-TC301-0006	<b>NEW</b> "Display preview" option	4.0
R-TC301-0007	<b>NEW</b> Autocheck Win authentication on logon	4.0
R-TC301-0008	<b>NEW</b> Alphabetize all products and workorders	4.0
R-TC301-00010	<b>NEW</b> The ability to select whether or not the Local Print option is displayed	4.0
R-TC301-00012	<b>NEW</b> "Disable Print button" option	4.0
R-TC301-00013	<b>NEW</b> Option to select the printer user would like to print after he selects the label	4.0
R-TC301-00015	<b>NEW</b> The ability to use WINDOWS authentication and have to type in Windows password to authenticate	4.0
R-TC301-	<b>NEW</b> Set synchronization between workstation, user, printers logic via External	4.0

00016	databases	
R-TC301-00017	<b>NEW</b> The ability to use a variables datagrid in the Printing Interface	4.0
R-TC301-00018	<b>NEW</b> The ability to change the color scheme and add your own company logo to the Printing Interface	4.0
R-TC301-00019	<b>NEW</b> Product value can populate a variable on the label user associate with that product	4.0
R-TC301-00020	<b>NEW</b> Search boxes with instant search and auto completion on Administration and Printing Interfaces	4.0
R-TC301-00021	<b>NEW</b> "Hide printed labels" option	4.0
R-TC301-00023	<b>NEW</b> New Options screen design to improve user experience	4.0
R-TC301-00011	Ability to reorder printers for each workstation or users. This will affect both the user logic and the workstation	4.0
R-TC301-00022	Optimize Connections screen GUI to improve usability	4.0

Ticket ID/ Defect ID	Fixes	Version
17255	TC 4.0, TC 3.0 (Web Admin): Date is the static search criteria for Reprint page	4.0
19872	TC 4.0, TC 3.01, TC 3.01 CFR/GHS (Local Print ActiveX): ActiveX control is signed incorrectly, publisher could not be verified	4.0
19900	TC 4.0 (Installation): Unhandled exception during installation of Printing Interface	4.0
19915	TC 4.0 (Web Admin): NullReferenceException is thrown after logon attempt	4.0
19916	TC 4.0 (Web Admin): Processing error occurred when navigating to Labels page	4.0
19918	TC 4.0 (Web Admin): Top menu contains broken URLs	4.0
19925	TC 4.0 (Web Admin): Labels page: Unhandled exception - Attempt to add a value without having an existing pick list	4.0
19927	TC 4.0 (Web Admin): Pick Lists popup: Values datagrid is not cleared after deleting the pick list	4.0
19933	TC 4.0 (Web Admin): Connections page: Unhandled exception - Error page is loaded with enabled Workstation logic, User logic, or both	4.0
19941	TC 4.0 (Printing Interface): Login page: User Name field doesn't contain value with enabled Windows Authentication checkbox	4.0

19943	TC 4.0 (Printing Inetrface, GUI): Print page: Instant search results box is not properly displayed in Internet Explorer	4.0
19971	TC 3.01, TC 4.0: Localization issue: LABEL ARCHIVE service will fail to start if current system date format is not US-alike	4.0
20115	TC 4.0 (Installation): Printing Interface web applications won't install without IIS 6 Management Compatibility features (IIS 7/8)	4.0
20124	TC 4.0 (Printing Interface): Selected pick list's values are not printed or saved	4.0
20127	TC 4.0 (Web Admin): Visible UI bugs on GUIDCustomization.aspx	4.0
20128	TC 4.0 (Web Admin): GUI: Size of user controls on Labels.aspx page	4.0
20129	TC 4.0 (Web Admin): GUI: Login.aspx page in Internet Explorer 10	4.0
20131	TC 4.0 (Web Admin): GUI: Popup dimensions on several pages	4.0
20132	TC 4.0 (Printing Interface): GUI bugs on PagePrint.aspx	4.0
20135	TC 4.0 (Printing Interface): GUI: Page content is not visible when popup is displayed (Internet Explorer 9/10)	4.0
20137	TC 4.0 (Printing Interface): NullReferenceException is thrown when printing label with linked data source	4.0
20138	TC 4.0 (Web Admin): Controls on Connections page are active when correspondent logics are not enabled	4.0
20148	TC 4.0 (Web Admin): GUI: "Product variable" popup style	4.0
20149	TC 4.0 (Printing Interface): PagePrint.aspx: Preview popup is not displayed on the second call	4.0
20157	TC 4.0 (Installation): Printing Interface installation on Oracle 11g database failed	4.0
20640	TC 3.01, TC 4.0 (Printing Interface, Localization): Input file for SENTINEL is generated in ANSI encoding	4.0
20909	TC 4.0 Error occured. Data configuration - > labels	4.0
20921	TC 4.0 (WEB ADMIN) Error appears on GUI Customization page	4.0
20922	TC 4.0 (WEB ADMIN) Header disappeared after chenging custumization	4.0
20923	TC 4.0 (WEB ADMIN) Unable to logut in IE 10	4.0
20929	TC 4.0 (Printing Interface) Under the search field smal dot is shown	4.0
20945	TC 4.0 (UMSS) Unable to create or edit user.	4.0
20946	TC 4.0 (Web Admin) GUI Customization - After we change logo font is changed to black.	4.0
20947	TC 4.0 (Web Admin) Text on login button in Russian language should be centered	4.0
20948	TC 4.0 (web admin) Combobox for language choose shown incorrectly	4.0

20949	TC 4.0 (web admin) GUI customization - Large images cannot be chosen as log. No warning or error displayed	4.0
20950	TC 4.0 (web admin) Work orders - Assign product popup - Search field should be a bit longer on the same line with combobox	4.0
20951	TC 4.0 (web admin) Labels - error appeared if we try to search label	4.0
20952	TC 4.0 (web admin) Default page is empty	4.0
20953	TC 4.0 (Web admin) Connections - Paging appeared after empty search result	4.0
20955	TC 4.0 (web admin) Naming - Workstation tab was not changed in Data Configuration -> Connections	4.0
20956	TC 4.0 (Web admin) Naming - Naming values should be loaded from cache instead of DB	4.0
20957	TC 4.0 (Web Admin) Data configuration - Connections - Printers order buttons does not work properly	4.0
20959	TC 4.0 (web admin) Data configuration - connections - Error appeared if we check both "Bind to Work orders" "Only apply to printers"	4.0
20978	TC 4.0 (Protection): Command Center does not update license status after activation. Refresh failed.	4.0
20982	TC 4.0 (Printing Interface): Print page: Preview operation is not stable	4.0
20985	TC 4.0 (Installation): LABEL ARCHIVE failed to start during installation and aborted the process	4.0
20986	TC 4.0 (Web Admin) Data Configuration - Work orders - Search field becomes uneditable after search	4.0
20987	TC 4.0 (Web Admin) Data configuration - connections - Printer logic - Search process never ends if we search fake label	4.0
20998	TC 4.0 (Installation) Database creation error during installation with oracle DB	4.0
21002	TC 4.0 (Protection): Incorrect license expiration tracking behavior in Command Center	4.0
21014	TC 4.0 (Web Admin) GUI Customization is not localized for French version	4.0
21016	TC 4.0 (Local printing plugin) Local printing plugin should be renamed to "TEKLYNX CENTRAL CLIENT PLUGIN"	4.0
21017	TC 4.0 (Printing Interface) Settings for printer does not work correctly on client workstation	4.0
21026	TC 4.0 (Printing Interface) Workstation should not be proposed to choose if workstation logic is turned off	4.0
21032	Tc 4.0 (Web admin) (Printing Interface) No redirect if user logged in and open in new window one of sites.	4.0

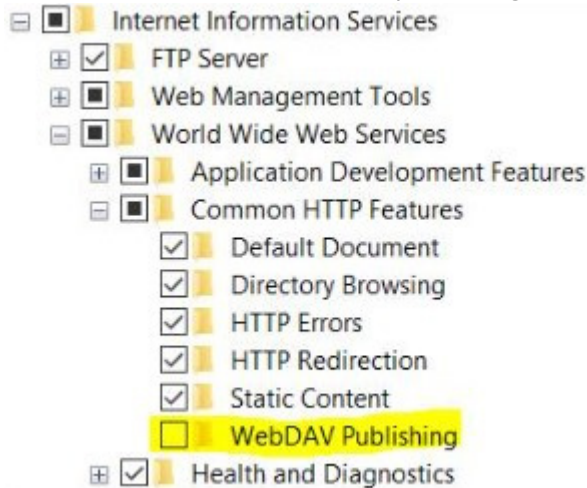
21039	TC 4.0 (Printing Interface) Unable to preview document label.	4.0
21040	TC 4.0 (Printing interface) Messagebox board should not appear if no text inputted in admin area	4.0
21047	TC 4.0 (Printing interface) "Print all" does not work properly.	4.0
21054	TC 4.0 (Printing interface) Work orders cannot be found on reprint page	4.0
21055	TC 4.0 (Printing interface) Local print does not work	4.0
21080	TC 4.0 (Label archive client) Check in as dialog - button is not shown	4.0
21112	TC 4.0 (external database) Error appear after we search work order on printing page	4.0
21118	TC 4.0 (external database) Product search does not work properly on printing page	4.0
21126	TC 4.0 (external database) Print all button does not work properly	4.0
21127	TC 4.0 (external database) Connections - printer logic - list of labels shown incorrectly	4.0
21145	TC 4.0 (printing interface) Message box area is showing incorrect text after refreshing the page	4.0
21174	TC 4.0 (external data base) paging on products page does not work properly.	4.0
21186	TC 4.0 (external database) List of labels shown incorrectly	4.0
21195	TC 4.0 (Printing Interface): Custom logo is not displayed on Printing Interface website	4.0
21198	TC 4.0 (Printing Interface): Incorrect behavior of tracking print requests with variables from external source	4.0
21199	TC 4.0 (External Database): Error message displayed when WorkOrders, Products or Labels page is requested	4.0
21202	TC 4.0 (External Database): Error occurs when adding existing filter on ProductsOLEDB.aspx page	4.0
21203	TC 4.0 (Protection): LABEL ARCHIVE service periodically stops (using SDX demo dongle)	4.0
21246	TC 4.0 (Printing interface) Message box border is visible when option is disabled	4.0
21250	TC 4.0 (Web Admin; Printing interface) Session expired after 6 hours.	4.0
21349	TC 4.0 (Printing interface): Preview of label is taking based on latest version from LAS DB	4.0
21413	TC 4.0 (External Database): "Hide Printed Labels" does not work with external databases	4.0
21414	TC 4.0 (External Database): Product variables are not populated with product value from external datasource	4.0

[Back to Menu](#)

## Known Limitations

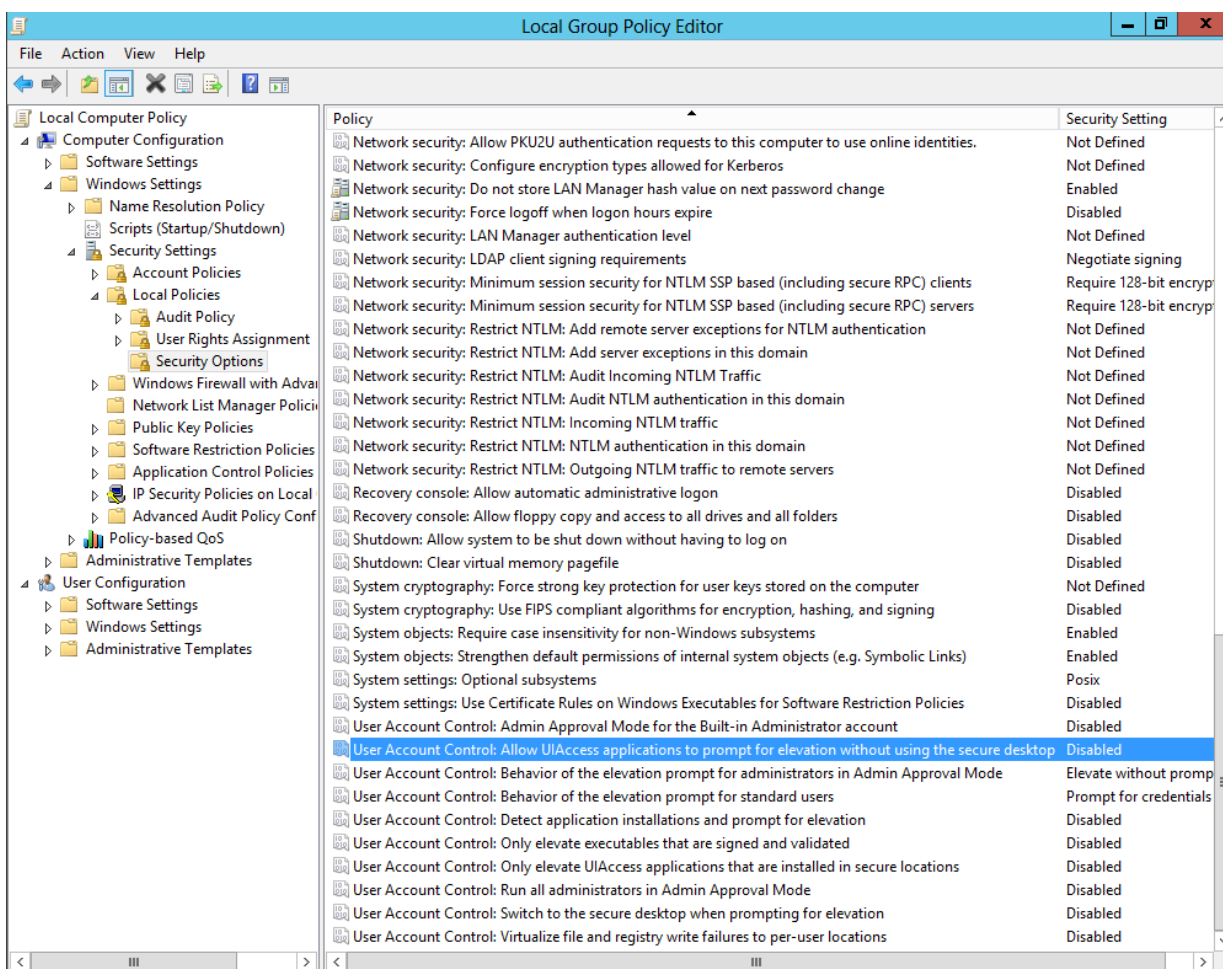
It's recommended to restart PC after installation and TC activation.

- Make sure to uncheck WebDAV publishing Windows feature for correct TC operations.



- CODESOFT consumes 2 licenses on remote PCs – the second one is consumed by LAS. Remotely installed CODESOFT via Command Center prompts login screen twice.
- Upgrade is possible from TC 4.7 or higher.
- Installation steps: Services screen of Application Configuration Tool. It's not possible to provide Window user with empty password for Services log on.
- It's preferable to turn off **Windows Firewall, User Account Control and Antivirus** before installation (if possible).
- **User Account Control** on server systems like Windows Server 2012 should be also turned off in Local Group Policies.





- If the Hosting Bundle is installed before IIS, the bundle installation must be repaired. It's available on DVD: `\\TKCENTRAL\\ISSetupPrerequisites\\{3CC9E37B-7D73-4FBE-9AB8-626CEB4FDD29}\\dotnet-hosting-3.1.13-win.exe`.
- For correct printing to file port on local PC, you need to launch LocalPrint from "named user" (not default SYSTEM or LocalSystem user).

November 10, 2020—KB4586830 (OS Build 14393.4046)

Addresses a security vulnerability by preventing applications that run as a SYSTEM account from printing to local ports that point to a file. Failing print jobs log error 50, "The request is not supported." in event ID 372 in the PrintService\\Admin event log. To address this issue in the future, make sure your applications or services run as a specific user or service account.

- **Web Printing True Reprint** feature limitation: in some cases, reprint preview may be not correct, however correct data is sent to printer.
- **Reprint and Document History Writing in LAS:** it's not possible to reprint jobs in Web Printing Interface if LAS history setting on turned off.

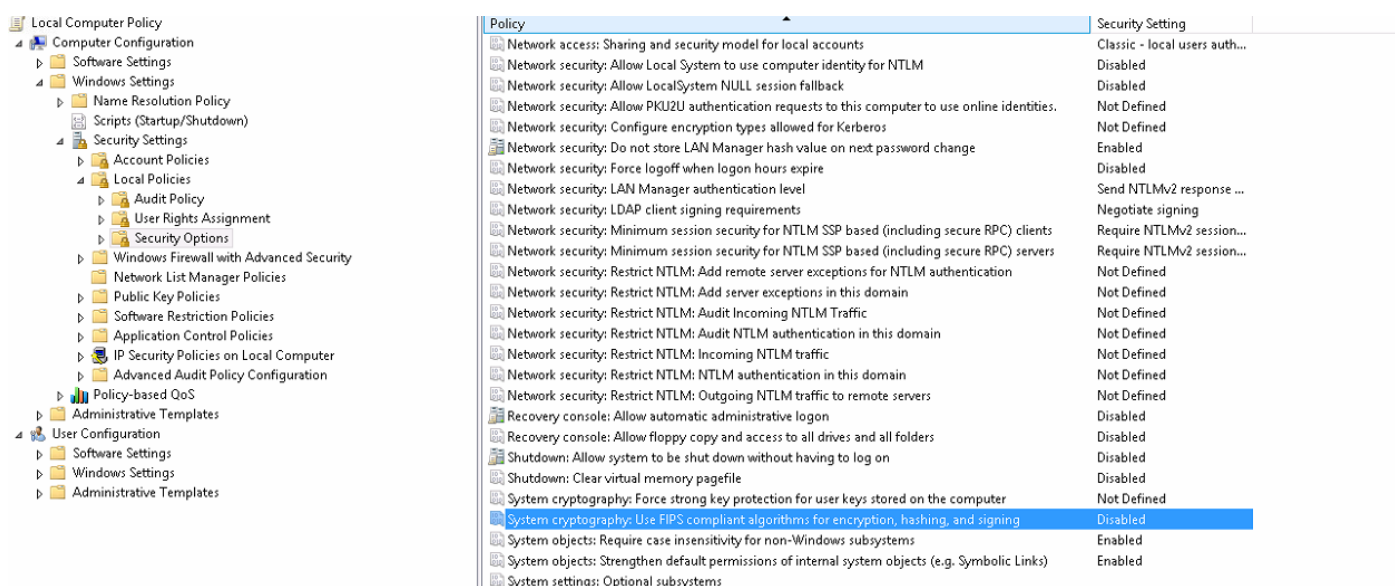
- **SQL Server:** if you install TC 8.0 services under local system account, this user should be granted enough permission in SQL Server Studio to work with TC databases.
- It's strongly advised to turn off Windows Security option "**System Cryptography: Use FIPS compliant algorithms for encryption, hashing, and signing**".

This option may cause connectivity problems (LA, Printing Interface etc.) when it's turned on by default in Local Computer.

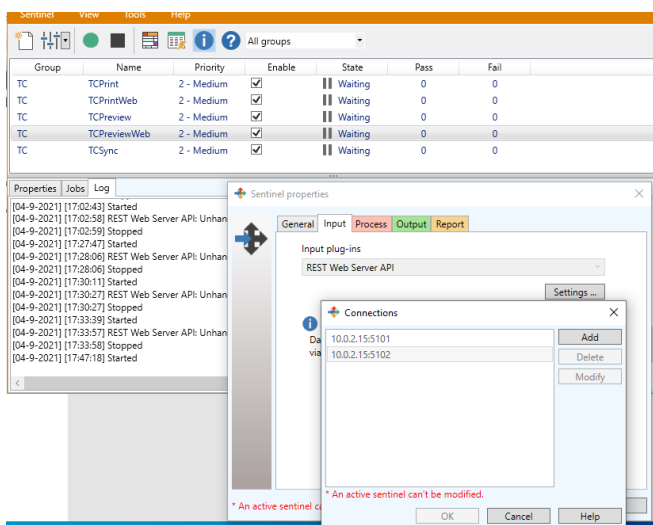
Microsoft techs provide explanation for this option.

<http://blogs.technet.com/b/secguide/archive/2014/04/07/why-we-re-not-recommending-fips-mode-anymore.aspx>

<https://support.microsoft.com/en-us/kb/811833>



- **Remote Installation** of CODESOFT/LABEL ARCHIVE Client can be performed only in the same domain as launched Command Center.
- **SENTINEL** first print usually takes more time because of Codesoft engine instantiation (cold start). Also Codesoft engine is re-instantiated each 4 hours and this causes temporary print speed decrease.
- **SENTINEL** cannot generate preview for the labels without .lab extension.
- If **SENTINEL** was not used for a period of time (10 minutes or more), getting a preview of a label after changing variables values might fail the first time. It will be shown from the second try on.
- If computer IP configuration has been changed, it's needed to update **SENTINEL** watches config too.



- After TC reinstall it's needed to re-add printers in **SENTINEL** and check them again.
- TC can be reinstalled or upgraded under the same DB user only. Some categories permissions may be reverted to default (folders with alphanumeric names).
- When TC is installed on the language different from the default English, Sentinel Management tools still will be displayed in English. It's necessary to manually select preferred language in these applications.
- TC 8.0 PRINTING INTERFACE Web Site, TC 8.0 PRINTING INTERFACE Administration, SENTINEL, LABEL ARCHIVE must be installed on the same PC. Three Sentinels will be created automatically – for printing, preview generation and infinite print. The watch folders for Print Sentinel must be "C:\Watch" and for Preview Sentinel - "C:\imgproc".
- **ASP:** Windows Server 2012/Win 8: IIS should have the following features enabled: ASP.NET 4.8, и .NET 4.8 Extensibility.
- **ASP:** If the ASP Hosting Bundle prerequisite is installed before IIS, the bundle installation must be repaired. Run the Hosting Bundle installer again after installing IIS.  
This setup is located on DVD under  
\\Software\TKCENTRALPACKAGETKCENTRAL\ISSetupPrerequisites\{3CC9E37B-7D73-4FBE-9AB8-626CEB4FDD29}\dotnet-hosting-3.1.13-win.exe.
- After TC is uninstalled, the Local Print component must be uninstalled from each workstation manually.
- Default PrintUser doesn't have enough rights to use actual Printing Interface because he's not a member of ACPrintUsers group. This PrintUser is mostly intended for SENTINEL and consumes no license.
- If an external database is located on the network, it should be accessible with read/write permissions.
- When printing to a file (XPS, PDF, etc.), the file selection dialog could be displayed in a different desktop which can be accessed by Interactive Services dialog provided by these operation systems.

This dialog is sometimes shown a certain period of time after clicking the Print button.

- Limitation for input strings in “Naming” feature is 30 characters. (Long strings may stretch UI).
- “Naming” feature may produce incorrect orthography in complex phrases on languages different from English.
- All Mobile devices that use the mobile version of TEKLYNX CENTRAL will send the same workstation name (HANDHELD). In the TEKLYNX CENTRAL Administration, when browsing workstations, this name will not be seen automatically and must be added manually for the correct workstation logic operation. Also, in License Manager, all users connected from Mobile devices will consume one license for the HANDHELD workstation. The same is applied for ClickPrint mobile application (iOS, Android).
- On some systems, Windows Authentication for Microsoft SQL Server does not work. It is recommended to use SQL server in the native or mixed authorization mode.
- The Administrator can change TC language settings in the Command Center, however changing the corresponding registry key is required to apply new language for all products.
- License will be not released immediately if user will close the Printing Interface browser window. Instead, it's highly recommended to use “Logout” buttons.
- **Local Print** feature uses only one Sentinel which processes all incoming requests in the queue. Printing performance may be affected by big amount of simultaneous printing jobs from different remote clients.
- **LocalPrint** printing to thermal printer with file port: LocalPrint and SENTINEL services should be launched under actual administrator account (not default LocalSystem user).
- There is known TKComm printing issue: big quantity of complex labels on USB printers produces “cannot connect printer” error. Fix will be provided as a patch.
- CODESOFT installed on the remote workstation through Command Center's remote installation feature doesn't allow changing password which is expired using UMSS login form. The password can be changed in any other application (CODESOFT on server side, UMSS/MSGs administration console).
- If user changes the license type (for example, software key to hard key) it's needed to refresh the Licensing service in Command Center or restart it manually.
- Window popups of TEKLYNX CENTRAL Administration and Printing Interface are closed after 15 minutes of inactivity.
- Mobile Application & Identity Server connectivity problems or “Invalid issuer” error. Locate c:\Program Files (x86)\Teklynx\IdentityProvider\appsettings.Production.json Set default issuer with the following line:
 

```
{
  "IdentityServer": {
    "IssuerUri": "urn:sso.company.com",
```
- **Oracle** limitations:

- Basic Oracle connection doesn't require additional software. For TNS connection, install Oracle Instant Client 19.25.0.0.0 (provided on TC DVD) after TC 8.0 and .NET 4.8 installations.
- Windows authentication may fail if Oracle database is adjusted to use case-sensitive strings. UMSS keeps Windows user credentials in lowercase ("domain/username"), but checking the "Windows Authentication" checkbox on login forms will substitute workstation domain in uppercase ("DOMAIN/username"). To avoid failures during login, change uppercase characters to lowercase.
- **TC 8.0 External DB** mode limitations:
  - Input masks are not supported in External DB mode.
  - "Hide Printed Labels" is not supported in External DB mode.
  - The External Database connectivity has been tested with SQL Server mostly, other data sources, including Microsoft Access, Microsoft Excel and Oracle, were not thoroughly tested as external databases and may cause instabilities in the system.
  - Populate product variable feature doesn't work in conjunction with Filters mode.
  - It's not recommended to use external data source, if a label contains specific internal logic (control variables, VB script etc.), which can override the quantity configured in TC.
- **UMSS** limitations:
  - UMSS does not support un-registration of applications, only re-registration is available.

[Back to Menu](#)

## Compatibility with other TEKLYNX Software

TEKLYNX CENTRAL v8.0 is compatible and fully tested to work with the following TEKLYNX software packages:

- CODESOFT 2025.00.00
- SENTINEL 2025.00.00
- LABEL ARCHIVE 2025.00.00 (TC 8.0 package version)
- UMSS/MSGs 2025.00.00 (TC 8.0 package version)

*Copyright 2025 TEKLYNX Corporation SAS. All rights reserved. TEKLYNX and its products are trademarks or registered trademarks of Teklynx Corporation SAS. All other brands and product names are the trademarks of their respective owners.*

*This release notes document is for informational purposes only. Product specifications are likely to change.*

[Back to Menu](#)



**France**  
+33 (0) 562 601 080

**Germany**  
+49 (0) 2103 2526 0

**Singapore**  
+65 6908 0960

**United States**  
+1 (414) 837 4800

Copyright 2025 TEKLYNX Corporation SAS. All rights reserved. LABEL MATRIX, LABELVIEW, CODESOFT, LABEL ARCHIVE, SENTINEL, PRINT MODULE, BACKTRACK, TEKLYNX CENTRAL, TEKLYNX, and Barcode Better are trademarks or registered trademarks of TEKLYNX Corporation SAS or its affiliated companies. All other brands and product names are trademarks and/or copyrights of their respective owners.

[www.teklynx.com](http://www.teklynx.com)