



TEKLYNX CENTRAL 7 Release Notes

Version 7.0

Table of Contents

| | |
|---|----|
| System Requirements | 3 |
| Server..... | 3 |
| Client:..... | 4 |
| Mobile Click Print Application: | 4 |
| Virtual Environment | 5 |
| TEKLYNX CENTRAL 7 New Features, Improvements and Fixes..... | 6 |
| TEKLYNX CENTRAL 7.0..... | 6 |
| TEKLYNX CENTRAL 6 New Features, Improvements and Fixes..... | 8 |
| TEKLYNX CENTRAL 6.0..... | 8 |
| TEKLYNX CENTRAL 5 New Features, Improvements and Fixes..... | 11 |
| TEKLYNX CENTRAL 5.1 | 11 |
| TEKLYNX CENTRAL 5.0..... | 12 |
| TEKLYNX CENTRAL 4 New Features, Improvements and Fixes..... | 17 |
| TEKLYNX CENTRAL 4.7 | 17 |
| TEKLYNX CENTRAL 4.6..... | 21 |
| TEKLYNX CENTRAL 4.5..... | 24 |
| TEKLYNX CENTRAL 4.2..... | 26 |
| TEKLYNX CENTRAL 4.0..... | 30 |
| Known Limitations | 36 |
| Compatibility with other TEKLYNX Software..... | 41 |

System Requirements

Server

This product has been tested on the following Windows® operating systems:

- Windows® Server 2022 Version 21H2 (Build 20348.1194)
- Windows® Server 2019 Version 1809 (Build 17763.2989)
- Windows® Server 2016 Version 1607 (Build 14393.2273)
- Windows® Server 2012 R2 Version 6.3 (Build 9600)
- Windows® Server 2012 Version 6.2 (Build 9200)
- Windows® Server Core 2022 Version 21H2 (Build 20348.1194)
- Windows® Server Core 2019 Version 1809 (Build 17763.2989)
- Windows® Server Core 2016 Version 1607 (Build 14393.2273)

All available updates should be installed.

Memory - 4Gb RAM minimum, 8Gb RAM recommended.

Hard disk space - A hard drive with at least 10 GB free disk space (depending on the installation options).

Display - Windows display adapter capable of 1366x768 with True Color capabilities and DirectX® 9 (DirectX 11 compliant card recommended).

Supporting software

- .NET Framework 4.8 (provided on DVD)
- IIS 8.0 or higher
- ASP.NET 4.0
- Any pdf reader (Adobe Acrobat Reader is available with the installation)
- LAS 2022.01.00 with UMSS 2022.01.00 (versions from TEKLYNX CENTRAL 7.0 package)
- SENTINEL 2022.00.01
- CODESOFT 2022.00.01

Databases

- SQL Server 2012/2014/2016/2017/2019/2022. SQL Server Express is recommended for demo purposes only.

- Oracle 12.2 or higher.
Note: no additional software is required for Basic Mode connection.
For TNS connection: Oracle Instant Client (12.2.0.1.0) provided on DVD.
- ClickPrint Web Application works with SQL Server only.

Client:

This product has been tested on the following Windows® operating systems:

- Windows® 11 (x64) version 22H2 (build 22621.1105)
- Windows® 10 (x86/x64) Version 22H2 (Build 19045.2251)

Memory - 4Gb RAM minimum, 8Gb RAM recommended.

Hard disk space - A hard drive with at least 1.5 GB free disk space (depending on the installation options).

Display - Windows display adapter capable of 1366x768 with True Color capabilities and DirectX® 9 (DirectX 11 compliant card recommended).

Supporting software

- .NET Framework 4.8 (provided on DVD)
- Any pdf reader (Adobe Acrobat Reader is available with the installation)

Web part - Microsoft Edge 110.0 or higher, Firefox 110.0 or higher, Google Chrome 110.0 or higher.

Mobile Click Print Application:

iOS 10.2 or higher, 13.3 is recommended. Both iPhone and iPad devices are supported. Android 8.0, 8.1, 9.0, 10.0. GUI is optimized for mobile phones; tablets are not recommended.

Note: LocalPrint plugin for Chrome works in domain environment only.

Note: Multilanguage pack is not complete in this version.

Virtual Environment

This product has been tested on the following Virtual Environment platforms:

- VMWare ESXi 7.0
- VMWare ESXi 6.0 vCenter 6.0 vSphere Client 6.0
- Citrix Hypervisor 8.2.0
- Microsoft Hyper-V Server 2019
- Oracle VM Virtual Box 7.0.2
- VMware Workstation 16.2.3

[Back to Menu](#)

TEKLYNX CENTRAL 7 New Features, Improvements and Fixes

TEKLYNX CENTRAL 7.0

| Task | New Features and Improvements | Version |
|-------|--|---------|
| 72952 | Improve CENTRAL 6.0 Printing Interface Admin Guide for 7.0 | 7.0 |
| 70347 | Remove Ability to Add/Remove Variables within Labels Section of TCADMIN | 7.0 |
| 54726 | TKCENTRAL - Manage Connections | 7.0 |
| 57094 | NEW Ability to select CENTRAL, CENTRAL CFR, or CENTRAL GHS upon install. | 7.0 |
| 67410 | NEW Add TEST Label Print Function to CODESOFT/CENTRAL | 7.0 |
| 57096 | NEW Auto save labels locally when you detach from LA | 7.0 |
| 58177 | NEW Add horizontal and vertical adjustment options in the printing interface of CENTRAL. | 7.0 |
| 58181 | NEW Allow for the database redirect of any site via installDB tool | 7.0 |
| 58178 | NEW Allow for TEKLYNX CENTRAL removal to happen via Add/Remove Programs instead of Start Menu Option. | 7.0 |
| 72417 | Implement TC Sync Service enhancements | 7.0 |
| 67716 | NEW Adding a Comment to the Reprint of TKCENTRAL | 7.0 |
| 67780 | NEW Ability to require a comment to be entered when selecting Reprint | 7.0 |
| 58733 | Local Print Expectations and Improvements for Administration/Licensing Control. | 7.0 |
| 69018 | Print page redesign | 7.0 |
| 66196 | NEW TC6.1: the print to PDF function should be controlled by the license addon. | 7.0 |
| 64343 | TEKLYNX CENTRAL performances scalability depending on usage | 7.0 |
| 64307 | NEW Add a preview button in LABELNET for TEKLYNX CENTRAL cloud printing. | 7.0 |
| 64306 | NEW Ability to define a quantity for each record selected in LABELNET + select/unselect button | 7.0 |
| 64285 | NEW Allow TC printing multiple labels on the same page when using the local print | 7.0 |
| 64282 | NEW Allow printing multi-page labels through local print | 7.0 |
| 63519 | Currently it is difficult to identify all of the TKCENTRAL application minor versions | 7.0 |
| 58192 | NEW Add the ability to download the label as a PDF as an option for the CENTRAL printing interface | 7.0 |
| 58173 | NEW Ability to change quantity of label printed for each label returned when using print all | 7.0 |

| | | |
|-------|--|-----|
| 55875 | NEW Restrict LA options within File > LABEL ARCHIVE based on user account or group. | 7.0 |
| 55873 | NEW Second search or filter box on interface | 7.0 |
| 55872 | Make print interface of CENTRAL look the same regardless of whether you use External DB or "regular" way | 7.0 |
| 55871 | NEW Ability to set default quantity for a returned label, but still change value according to database record | 7.0 |
| 47905 | NEW Ability to download a PDF of the printed labels | 7.0 |
| 46287 | NEW Make silent installation to work with Configuration Tool | 7.0 |

| Ticket ID/ Defect ID | Fixes | Version |
|-------------------------|--|---------|
| 75658 | Incorrect Human Readable when barcodes saved in "NAME" view mode. | 7.0 |
| 70374 | Deployment fails if installation softwares are already present in local folders | 7.0 |
| 65784 | CODESOFT can't be used with LAS on client Workstation | 7.0 |
| 65671 | Printing Interface. Print PDF. If the 'Quantity' is greater than 1, then several 'print' records are created in the LAS history, instead of one | 7.0 |
| 63809 | Printing Interface. If the user does not have permission to print, but he tries to print the label, a record is created in the reprint | 7.0 |
| 65735 | CC. If you try to log into the CC as Manager, then try to log in as a Administrator (without restarting the CC), Administrator will not be able to log in | 7.0 |
| 64238 | Printing Interface. Adding a newly created label. Allow the addition of such a label without re-selecting the category (when the 'Valid from' date and time is appropriate) | 7.0 |
| 63810 | Printing Interface. If the value of the variable contains characters (<>), then printing gives an error. The same error is thrown when trying to add this label to the queue | 7.0 |
| 45172 | Check-in comments erased when saving a draft label | 7.0 |
| 70798 | Printing interface. On Windows Server 2022 'Print' button is not appeared. | 7.0 |
| 76435 | Printing Interface. Local Print. Sentinel allows you to print to local printers in case the licenses are exhausted | 7.0 |

[Back to Menu](#)

TEKLYNX CENTRAL 6 New Features, Improvements and Fixes

TEKLYNX CENTRAL 6.0

| Task | New Features and Improvements | Version |
|-------|---|---------|
| 60457 | NEW License the ability to use local printing with CENTRAL | 6.0 |
| 52578 | NEW Ability to select the printer and use local print while doing a true reprint through the website. | 6.0 |
| 51043 | NEW Click Print web enhancements | 6.0 |
| 46631 | NEW Store the list of the deployed workstations | 6.0 |
| 42513 | NEW Manage to a printer through CENTRAL | 6.0 |
| 42517 | NEW Rewrite MMC snap-ins as Windows Forms application | 6.0 |
| 45130 | NEW TLS 1.2 Encryption Methods | 6.0 |
| 47833 | NEW Rebuild LAWEB and add a feature to request a new label | 6.0 |
| 58729 | NEW The ability to configure the external DB to restrict variable input by min length, max length, and and masks like the standard interface | 6.0 |
| 54009 | NEW Makes TEKLYNX CENTRAL compatible with Single sign on authentication (SAML V2.0 , OAuth ...) | 6.0 |
| 55876 | NEW Using image on tcadmin for custom GUI messes with ability to set message box text as red or formatted | 6.0 |
| 56073 | NEW Migrate LAS and UMSS from .Net Remoting to gRPC | 6.0 |
| 58174 | NEW Add clear after print option per variable for LABELNET | 6.0 |
| 56865 | NEW Check out Final document as Draft. | 6.0 |
| 45459 | TEKLYNX CENTRAL Mobile App Does Not Consume a License | 6.0 |
| 49627 | LocalPrint Plugin installation requirement to be conditional based on Local Print and/or Workstation logic enabled | 6.0 |
| 46419 | Remove need for local print plugin when local printing, workstation logic, and workstation variable are not in use | 6.0 |
| 42515 | Label 'Approvers' should not consume an ACDesign license | 6.0 |
| 42516 | Improve CENTRAL-SENTINEL Integration: get label info and perform printing via Sentinel web service | 6.0 |

| | | |
|-------|---|-----|
| 45173 | All Windows authentication screens have the option to prompt for a windows password | 6.0 |
| 45312 | File>Label Archive>Connect performs UMSS/AD Group link check | 6.0 |
| 45874 | Create a constraint between LABEL ARCHIVE.dbo.tblDocuments and LABELNET.dbo.Labels | 6.0 |
| 46763 | MSGS user activities logging: audit trail enhancements | 6.0 |
| 48427 | Make the preview in LABEL ARCHIVE higher quality. | 6.0 |
| 47831 | Option to force windows password in every interface in which you authenticate. | 6.0 |
| 47613 | Printer aliases not displayed in TKCentral TCAdmin printer logic | 6.0 |
| 52560 | Test Print Watermark - pull from LABEL ARCHIVE settings | 6.0 |
| 54004 | Add an audit trail for configuration changes that are made within TCADMIN / LAS | 6.0 |
| 55877 | Wrong label is selected on checkout when using sort | 6.0 |
| 58179 | Resolve Common Services Error on Install when NO Trial available | 6.0 |
| 58188 | TEKLYNX CENTRAL License Manager should be option within Start menu | 6.0 |
| 58189 | Prompt for CENTRAL activation after install | 6.0 |
| 58190 | Remove license managers/activation screens for all other software with CENTRAL. | 6.0 |
| 58005 | Track all changes in LABEL ARCHIVE ADMIN | 6.0 |

| Ticket ID/ Defect ID | Fixes | Version |
|-------------------------|---|---------|
| 46310 | Services cannot start when user name contains spaces | 6.0 |
| 46401 | TC5.0: Installer components are not removed | 6.0 |
| 46998 | Fix "License expired" English message | 6.0 |
| 48491 | LA categories permissions unchecked while creating user group | 6.0 |
| 50733 | TKCENTRAL 5 CAN'T INSTALL CLIENT CODESOFT & LA ON W10 | 6.0 |
| 53814 | Local Print Tool breaks when using SATO drivers due to degree symbol in User.ini file | 6.0 |
| 59876 | Label Archive connection from under Codesoft is case sensitive | 6.0 |
| 60198 | Move ClickPrint mobile applications authentication for IdentityServer | 6.0 |
| 45132 | Reprint preview does not accurately reflect the actual reprint | 6.0 |
| 45802 | Uninstall should not remove configuration files | 6.0 |
| 47198 | Allow Users to Change Password from Print Interface | 6.0 |
| 48518 | ACDesignUsers name changes and no one can access CODESOFT | 6.0 |

| | | |
|-------|--|-----|
| 54295 | Transfer True Reprint functionality from TC 5.1 Post Release Fixes 3 to TC 6.0 | 6.0 |
| 58180 | InstallDB tool does not create application pools properly when adding additional sites | 6.0 |
| 42513 | Manage to a printer through CENTRAL | 6.0 |
| 47445 | Respect time zones for a global deployment | 6.0 |
| 47504 | Addition to release notes. "It is recommended that the application for TEKLYNX CENTRAL is dedicated to TEKLYNX CENTRAL and no other applications run on this server" | 6.0 |
| 55308 | Unable to export documents to MDB database size of > 300 Mb | 6.0 |
| 60496 | Empty document name on checkout when using sort | 6.0 |
| 55999 | TC 5.1 installer failed to adjust the Firewall settings on German Windows 2019 server | 6.0 |
| 50479 | Case sensitivity issue on Oracle database | 6.0 |
| 58159 | Meta data problem | 6.0 |
| 58187 | Currently can end LA connection to SENTINEL via LA Admin | 6.0 |
| 58204 | Ability to add/modify/delete categories from LABEL ARCHIVE Administration | 6.0 |
| 58212 | Meta data issues when the "same" label exists in multiple categories and is deleted | 6.0 |
| 58546 | version numbering starts from 0 instead of 1 | 6.0 |
| 60042 | Check out. In case user does not have Query permission to the root Codesoft category - the form will open, but the set of tabs in it will be incorrect | 6.0 |

[Back to Menu](#)

TEKLYNX CENTRAL 5 New Features, Improvements and Fixes

TEKLYNX CENTRAL 5.1

| Task | New Features and Improvements | Version |
|-------|--|---------|
| | NEW Command Center – New Command Center Look & Feel | 5.1 |
| 47198 | NEW Allow Users to Change Password from Print Interface | 5.1 |
| 42517 | NEW Rewrite MMC snap-ins as Windows Forms application | 5.1 |
| 45130 | NEW UMSS database connection now supports TLS 1.2 Encryption Methods | 5.1 |
| 45173 | NEW All Windows authentication screens have the option to prompt for a windows password | 5.1 |
| 46763 | NEW MSGS user activities logging: audit trail enhancements | 5.1 |
| 47831 | NEW Option to force windows password in every interface in which you authenticate | 5.1 |
| 45802 | Uninstall should not remove configuration files | 5.1 |
| 46310 | Services cannot start when user name contains spaces | 5.1 |
| 46419 | Remove need for local print plugin when local printing, workstation logic, and workstation variable are not in use | 5.1 |
| 45312 | File>Label Archive>Connect performs UMSS/AD Group link check | 5.1 |
| 48427 | Make the preview in LABEL ARCHIVE higher quality | 5.1 |
| 48491 | LABEL ARCHIVE categories permissions unchecked while creating user group | 5.1 |

| Ticket ID/ Defect ID | Fixes | Version |
|-------------------------|--|---------|
| 52528 | Problems with reprinting of print jobs made in earlier TC versions | 5.1 |
| 52527 | LAS: Upgrade from LAS 2019. Error if open HistoryData dialog (from History dialog) for a print job which was printed in LAS 2019 | 5.1 |
| 52526 | LAS: "Attempted to read or write protected memory." during printing a Label Details report (on Check-out dialog -> Details tab) | 5.1 |
| 52525 | LAS: System crashes during "Export Drawings" (on Check-out dialog) for labels with variables without Max length set | 5.1 |
| 52524 | Problems with deleting product and deleting label associated with product (Printing Interface Administration) | 5.1 |

| | | |
|-------|--|-----|
| 52523 | LAS: User can print and check-out a previous final version even if have no rights to perform it (only for documents which name contains special characters) | 5.1 |
| 52522 | LAS: The error is shown during password confirmation on Reprint (if enabled in UMSS properties - "Password confirmation is required for critical operation") | 5.1 |

TEKLYNX CENTRAL 5.0

| Task | New Features and Improvements | Version |
|----------------|--|---------|
| | NEW SSL/HTTP support added to LocalPrint plugin | 5.0 |
| | NEW External DB mode: SQL Views support added | 5.0 |
| | NEW True reprint behavior: this feature is available for server-side reprint, however LocalPrint jobs will have old static preview (non-true reprint) | 5.0 |
| RTC5.0-2.2-004 | NEW When associating a label with a product it should respect the order that the variables are configured in CODESOFT after they are imported into CENTRAL as well as all the min, max, mask, and pick lists settings. | 5.0 |
| RTC5.0-2.2-006 | NEW The ability to install a second TCADMIN and TKCENTRAL webpage and DB. Feature is managed by Application Configuration tool launched during installation or later. It's enabled by the following command line parameters: c:\Program Files (x86)\Teklynx\Common\InstallDB.exe" /mode:cloneweb. | 5.0 |
| RTC5.0-2.2-007 | NEW The ability to direct CENTRAL to look to a new DB server or DB's by changing 1 location, not many spots. This change is for SQL Server only. Feature is managed by Application Configuration tool launched during installation or later. | 5.0 |
| RTC5.0-2.2-015 | NEW Implement statistics dashboard in Command Center displaying: Top 3 most active users based on the quantity of print requests. Top 3 most active printers and the quantity of labels printed. Top 3 most active products or work orders. | 5.0 |
| RTC5.0-2.2-016 | NEW The ability to have a reprint through CENTRAL that functions the same as the reprint through LABEL ARCHIVE. This would be a true reprint, not a re-request. | 5.0 |
| RTC5.0-2.2-011 | Include the following customers' patches: 1. Deleting UMSS sessions for UMSS-MSGs Administration Snap-in and remote CODESOFT if requests from these apps have not being processed more than 5 minutes by default. 2. Deleting UMSS session from UMSS-MSGs Snap-in releases the appropriate license. 3. Administrator user does not consume license on server side to let Command Center be launched anyway. 4. UMSS user groups can be cloned via UMSS-MSGs Snap-in. 5. Reprint for External Database. 6. Reprint history only for current user. | 5.0 |

| | | |
|----------------|---|-----|
| | 7. Reprint with CODESOFT control variables. 8. Allow "When Printed variables" modification on External Database Reprint. | |
| RTC5.0-2.2-017 | Make the SQL DB's on the back end of CENTRAL work with SQL Replication. This only has to be 1-way replication (transactional replication), no need in bi-directional replication. | 5.0 |
| RTC5.0-2.2-040 | Support upgrades from any version 4.0 or above | 5.0 |
| RTC5.0-2.2-047 | Add "Double entry verification feature" for variables on Print page to comply of CFR21 part 11. Section "6" says that for critical data entered manually there should be an additional check on the accuracy of the data | 5.0 |
| RTC5.0-2.2-050 | The ability to require a password for a user to be able to generate a reprint. This would need to be incorporated in both the browser reprint in which you are currently redesigning and directly in CODESOFT. The authentication would need to be with their UMSS or AD account. NOTE: Password is not requested for Local Reprint jobs. | 5.0 |
| RTC5.0-2.2-051 | Copied from LAS 2017 MRD: Ability to rename a folder in LA | 5.0 |
| RTC5.0-2.2-052 | Ability to configure an input mask in a variable just like you can in CODESOFT and standard mode, but while using the external DB feature | 5.0 |
| RTC5.0-2.2-053 | Windows auth login with manual password entry. Login will be stopped on following error codes returned by domain controller: ERROR_PASSWORD_EXPIRED 1330 ERROR_TIMEOUT 1460 ERROR_LOGON_FAILURE 1326 ERROR_ACCOUNT_DISABLED 1331 ERROR_INVALID_DOMAIN_STATE 1353 ERROR_NO_SUCH_DOMAIN 1355 | 5.0 |
| RTC5.0-2.2-054 | Tags enhancements: tags lists with adjustable default settings | 5.0 |
| RTC5.0-2.2-055 | Searching over labels using variables as lookup parameters. CODESOFT should add variables metadata on Check In | 5.0 |
| RTC5.0-2.2-057 | LocalPrint should support UNICODE charset | 5.0 |
| RTC5.0-2.2-058 | Use the user and workstation names from the printing interface on the label that is printing (applied for both printing and preview) | 5.0 |
| RTC5.0-2.2-059 | Mobile ClickPrint application will have same Product/Workorders/Labels workflow as regular Printing Interface web site. NOTE: Windows Auth is not possible for Mobile Application because iOS/Android devices cannot be in Windows Domain. | 5.0 |
| RTC5.0-2.2-060 | To have an option setting Print Quantity to 1 in External DB mode. Currently it's controlled by SQL query | 5.0 |

| Ticket ID/ Defect ID | Fixes | Version |
|-------------------------|--|---------|
| 44597 | TC 5.0 RC1: When printing is made on a local printer, the reprint doesn't work and local print button is missing. | 5.0 |
| 44596 | TC 5.0 RC1: The preview is no longer displayed in the reprint interface | 5.0 |
| 44593 | TC 5.0 RC1: Option "Clear Label Quantity" has a dependance with option "Mapped Variables" | 5.0 |
| 41310 | TC 5.0. TCAdmin site. Add label. Current category is not marked | 5.0 |
| 39751 | Add the possibility to populate label variables with workorder and product selected | 5.0 |
| 39750 | TKCENTRAL 4.2 : Customer CAWE is having problems with web print interface | 5.0 |
| 39747 | Manage the right to invalidate a validated version of a label as a standard LAS right | 5.0 |
| 39746 | Can't configure printer in local Print mode if not running IE with run as admin | 5.0 |
| 39744 | Connection to LAS can be slow due to digital signature | 5.0 |
| 39743 | It should be possible in Label Archive to search for a specific jobname using wildcard characters like *, %, ? ... | 5.0 |
| 39742 | Problem when clicking in the history tab of the action field window of the designer | 5.0 |
| 39741 | The local print client should be available as an msi package | 5.0 |
| 39740 | The email is not imported when adding a windows user from the select user dialog | 5.0 |
| 39739 | The import dialog of UMSS takes very long time to update on large network | 5.0 |
| 39737 | It is possible to create a new draft version of a label while it is already submitted for approval. | 5.0 |
| 39736 | Label Variables are case sensitive in TKCentral | 5.0 |
| 39735 | It would be nice to have a button save/cancel to validate changes made on the variable field values. | 5.0 |
| 39734 | There is no way to delete a variable that has been added with new button in TCADMIN interface on the label page | 5.0 |
| 39733 | TC 5.0 (UMSS): Command Center registration failed after license deactivation. | 5.0 |
| 39725 | Wrong default CODESOFT folders after install | 5.0 |
| 39724 | Error occurs on first request to TC Web Api | 5.0 |
| 39723 | TC 5.0 (External DB): Variable data source remains active after External DB data source changed. | 5.0 |
| 39722 | TC 5.0 (External DB). Application variable type is not converted to corresponding database type. | 5.0 |
| 39721 | TC 5.0 (External DB): Query including column name with space character inside failed | 5.0 |

| | | |
|-------|---|-----|
| | to be parsed. | |
| 39720 | TKCentral error on opening label at preview | 5.0 |
| 39719 | TKCentral wrong labels printed after upgrade | 5.0 |
| 39073 | TC 5.0 Installation. If the user uses the button 'Back' on the form 'Ready to install', then the back jump is incorrect | 5.0 |
| 37530 | TC 5.0: LocalPrint plugin doesn't work on Firefox 57 | 5.0 |
| 37529 | TC 5.0: Enable User logic and check the option to "only work with printers", it will not return any products for any user. | 5.0 |
| 37431 | TC 5.0 It's required to run internet explorer under admin account to change and save the printer configuration and install/update printers | 5.0 |
| 35704 | TC 5.0. Printing Interface. Reprint. Preview function works twice if user try to select Reprint image | 5.0 |
| 35703 | TC 5.0. Printing Interface. Re-print. If label has no variables and user try to select it, incorrect message appears | 5.0 |
| 35047 | TC 5.0 "Select Workorder" popup is empty in case Workstation logic is enabled | 5.0 |
| 32172 | TC 5.0. DVD interface. Supplementary manuals. Small IE problem | 5.0 |
| 31988 | TC 5.0 (HostCommon): CS application properties are failed to be set after instance restart. | 5.0 |
| 31976 | TC 5.0 (Web Admin): Discard Reprint settings | 5.0 |
| 31975 | TC 5.0 (Printing Interface): Save button is visible and preview is updated on Print page if all variables have hidden status. | 5.0 |
| 31921 | TC 5.0 (External Database): "Clear variables after print" option with batch print operation. | 5.0 |
| 31901 | TC 5.0 (External Database): Local Print All using FILE port prints only single label | 5.0 |
| 31840 | TC 5.0 (LABEL ARCHIVE): LA service is stopped after license activation. | 5.0 |
| 31665 | TC 5.0 (UMSS): Frequent 'StillAlive' requests probably lead to increased memory consumption by SQL Server | 5.0 |
| 31656 | TC 5.0 (Printing Interface): Label print fails if customized min length contradict one imported from CODESOFT label. | 5.0 |
| 31554 | TC 5.0 (LABEL 91ARCHIVE): LA client cannot log on server if LAS application is marked for re-registration in UMSS database. | 5.0 |
| 31543 | TC 5.0 Installation -> Customer Information Form -> Messages about 'Organization/User cannot be empty' is not translated | 5.0 |
| 31538 | TC 5.0: request for Sentinel (upgrade from 4.5, SQL express). After restart - message appears 'An instance of the service is already running' | 5.0 |

| | | |
|-------|---|-----|
| 31532 | TC 4.6 (Printing Interface). Message about Client Plugin version mismatch is absent on Login page. | 5.0 |
| 31349 | TC 5.0 (Local Print): Local printer is not added properly if browser is not launched with administrator permissions. | 5.0 |
| 31299 | TC 5.0 (Web Admin. External DB): Products grid paging leads to application inaccessibility | 5.0 |
| 31876 | TC 5.0 (Printing Interface): Current localization for web application should be saved on client side. | 5.0 |
| 31902 | TC 5.0 (Printing Interface): Several tables in LABELNET database have no unique constraint required by application. | 5.0 |
| 31608 | TC 5.0 (Printing Interface). Label is not printed properly on local Windows printer if current label unit is Inch. | 5.0 |
| 40133 | Timeout Period for LA clients -- TKX-117940-N6F5 | 5.0 |
| 39749 | Add a triage option to display the labels in different order on page Labels of TCADMIN | 5.0 |
| 39748 | Manage the right to invalidate a validated version of a label as a standard LAS right | 5.0 |
| 39731 | Enhancement: Add a confirmation popup window when using the Save button in Labelnet Admin interface > connections > printer logic | 5.0 |
| 39730 | It should be possible to associate multiple labels with a product at the same time | 5.0 |
| 39729 | Use the parameter of the CODESOFT variables to setup the variables in TCADMIN | 5.0 |
| 39728 | It should be possible to search for some labels in page Labels of TCADMIN | 5.0 |
| 39726 | Allow SQL databases to be created in advance before the TC installation starts | 5.0 |
| 39718 | Problem with labels that have been validated but with a date of validity | 5.0 |
| 31688 | TC 5.0 (Local Print): Development environment: Migration to Visual Studio Code | 5.0 |
| 31560 | TC 5.0 LAS dependencies in TC | 5.0 |

TEKLYNX CENTRAL 4 New Features, Improvements and Fixes

TEKLYNX CENTRAL 4.7

| Task | New Features and Improvements | Version |
|----------------|---|---------|
| RTC4.7-2.2-005 | NEW The ability to create a second webpage that has no logic, it simply allows you to select and print a label. Similar to click print, but available through the web | 4.7 |
| RTC4.7-2.2-021 | NEW Make printer logic and user logic an option to use in external DB mode | 4.7 |
| RTC4.7-2.2-030 | NEW The ability to push the printing plugin install in the same fashion as you do the client install of CODESOFT. Today the client installs 3 components, CS, LAC, and the plugin for printing. I want that to stay the same, but have the option to just push out the local print plugin. | 4.7 |
| RTC4.7-2.2-033 | NEW An option in LA that will remove the allowance of "self-approval". Making it so users can not approve their own labels. | 4.7 |
| RTC4.7-2.2-045 | NEW Introduce Android and iOS mobile applications similar to CODESOFT ClickPrint | 4.7 |
| RTC4.7-2.2-001 | Make the "Use auto search in Product/Workorder box" work. The expected functionality would be to have it activate or deactivate the autocomplete in the search box and when activated, allow it to reflect the amount of items that return in the product or workorder box. | 4.7 |
| RTC4.7-2.2-008 | Fix the message. Steps to replicate: When a user without Administrative rights attempts to log into Central Command Center. Message received: "It is not enough access permissions." Suggested change: "That User Account does not have permission to access this feature". | 4.7 |
| RTC4.7-2.2-009 | Delete printer button in CENTRAL TC ADMIN page should prompt a user to remove all associations from any logic used elsewhere. A query to search all objects in use by that printer should be easy enough so that a user does not have to search through everything on their own manually. | 4.7 |
| RTC4.7-2.2-010 | Customer quote: "Associates in my distribution center may have a difficult time remembering product names due to the other tasks/items they need to remember to perform their job tasks. Maybe this can be a drop down to show the products they have access to when searching for labels?" This would simply make the product or workorder box a dropdown in standard mode. This would be bad for users with many products or workorders, but very useful for many of our clients. This will need to be a configurable option. | 4.7 |
| RTC4.7- | The option to have the Printing Interface remember the last printer that was used. We need this to be a configurable option on the admin page. Note: last printer value is stored | 4.7 |

| | | |
|----------------|--|-----|
| 2.2-012 | for specific user. | |
| RTC4.7-2.2-013 | If you have the print queue option turned on, and the regular print button, you cannot print just 1 label design using the regular print button. It forces the user to have to add a single label to the queue, and then print the entire queue to print just 1 label. | 4.7 |
| | The print button should function for individual requests if enabled on the site to go along with print queue option | 4.7 |
| RTC4.7-2.2-014 | When external DB is selected, it greys out all the features that are not usable anymore | 4.7 |
| RTC4.7-2.2-019 | 1) Removing a label from a list of products, then re adding it causes the. lab file to go to the bottom of the list. It should either go to its original position or there should also be options for automatic sorting. 2) An option to drag the labels within the product to organize would be nice. Rather than using the arrows, or both. | 4.7 |
| RTC4.7-2.2-020 | Error Message Application Usage. Steps to replicate error message: Just after logging into system and launching Command Center. Services required may not have all fully started. Error Message Received: "Access is denied. Unable to perform UMSS connection. Unknown error" Suggested change to message: "Access is denied. Unable to perform UMSS connection." | 4.7 |
| RTC4.7-2.2-022 | When preview is not enabled, it should remove the need to process the preview in the background | 4.7 |
| RTC4.7-2.2-023 | When reprint is enabled, highlight the tab in use | 4.7 |
| RTC4.7-2.2-026 | Customer would like to set a default printer in the local print plugin. So that they do not have to select it every time | 4.7 |
| RTC4.7-2.2-028 | Customer would like to set a default printer in the local print plugin. So that they do not have to select it every time | 4.7 |
| RTC4.7-2.2-031 | Add the UMSS user group copy patch as a default feature | 4.7 |
| RTC4.7-2.2-032 | The ability to bind a user group in UMSS with a USER Group in Active directory. This will allow us to create just 1 association, group to group, and have the system be manages all the way in AD from there on out. | 4.7 |
| RTC4.7-2.2-034 | The ability to double click a label in label archive to check the label out of LABEL ARCHIVE | 4.7 |
| RTC4.7-2.2-035 | A description field for each step of approval rule, displayable wherever approval rules are shown | 4.7 |
| RTC4.7-2.2-036 | Remove SMA from interface | 4.7 |

| | | |
|----------------|--|-----|
| RTC4.7-2.2-037 | Increase logout button size of web interface | 4.7 |
| RTC4.7-2.2-041 | Let user to select data results merging mode when several TC logics are enabled. It should be configured on Options screen: "Union" or "Intersection" will be applied to combine results of different logics datasets. | 4.7 |
| RTC4.7-2.2-043 | LAS: the ability to move a label from one folder to another | 4.7 |
| RTC4.7-2.2-044 | Display locked/not-locked status of each user in the UMSS Management Console screen | 4.7 |
| RTC4.7-2.2-046 | UMMS permissions fix for categories: after adding a new category actual permissions checkboxes are not enabled | 4.7 |

| Ticket ID/ Defect ID | Fixes | Version |
|-------------------------|--|---------|
| 31935 | TC 4.6. Connections (web). If the admin deleted the connection, the user will anyway be able to work with Printing Interface | 4.7 |
| 31872 | TC 4.6 (Codesoft). Codesoft is crashed if the user is loggen to LAS (2 cases) | 4.7 |
| 31689 | TC 4.6 (Printing Interface, Web Admin): Custom logo is not available after guide-based version upgrade | 4.7 |
| 31657 | TC 4.6 (LAS). Check out window. The button Save behaves incorrectly when resizing | 4.7 |
| 31533 | TC 4.6 (Printing Interface). Client plugin is not installed as Chrome extension in a case of SSL communication. | 4.7 |
| 31504 | TC 4.6 Build10. Uninstall build 9 - install build 10: problems with license manager | 4.7 |
| 25788 | TC 4.60.00: Empty Naming values are saved to database as string with spaces | 4.7 |
| 32217 | TC 5.0 (Installation): Web applications for Printing and Admin Interfaces cannot be installed on IIS 10.0 (Windows 10) | 4.7 |
| 24201 | TC 4.5/TC 5.0: Inconsistent behavior of User Logic's "Apply to User Groups" option | 4.7 |
| 24200 | TC 4.5/TC 5.0: Local Printing is not working in case of Oracle-based installation | 4.7 |
| 24197 | TC 4.5/TC 5.0: UMSS registration failures (Version Upgrade from 4.0) | 4.7 |
| 24196 | TC 4.5/TC 5.0: Remote installation of CODESOFT from Command Center failed | 4.7 |
| 32187 | TC 4.6 (Command Center). Add info about .NET Framework 4.5 in remote installation window | 4.7 |
| 32060 | TC 4.6 (External DB): Workorder variable initialization leads to error message | 4.7 |
| 32029 | TC 4.6 (External DB): Print All: User-selected dataset values are not retained for | 4.7 |

| | | |
|-------|---|-----|
| | selected label | |
| 32013 | TC 4.6 (External DB): Queued Print Request failed to be created in External DB mode. | 4.7 |
| 32011 | TC 4.6 (External DB): Product/Workorder variables logic is not applied during Print All and Local Print All operations. | 4.7 |
| 31971 | TC 4.6 Reports. Fields TCUser and TCWorkstation are not filled | 4.7 |
| 31953 | TC 4.6 (External DB): Custom value in editable drop down list on Print page is not applied to preview. | 4.7 |
| 31936 | TC 4.6 (LAS 2015.02). Check out, History. etc. If the table is sorted by any column, the search does not work | 4.7 |
| 31924 | TC 4.6 (Version Upgrade): UMSS: Custom user groups from TC 4.5 are not available after upgrade | 4.7 |
| 31820 | TC 4.6 (Local Print): Chrome: Local Print features are not functional on Reprint page. | 4.7 |
| 31691 | TC 4.6 (Web Admin): Label Search doesn't work properly on Printer Logic tab. | 4.7 |
| 31690 | TC 4.6 (Local Print): Variables are not saved after local print on Print page. | 4.7 |
| 31687 | TC 4.6 (Printing Interface): Variables are cleared on Print page even if it is not allowed to modify them. | 4.7 |
| 31686 | TC 4.6 (Web Admin): Firefox: Administration website uses NPAPI plugin instead of dedicated add-on | 4.7 |
| 31660 | TC 4.6. UMSS. Permission 'Document in not valid state'. Change conditions (add 'state = Final' condition) | 4.7 |
| 31658 | TC 4.6 (Printing Interface): 'From Grid' variable status is conflicted with other available statuses on Print page. | 4.7 |
| 31654 | TC 4.6 Firefox crashes after Local print. | 4.7 |
| 31653 | TC 4.6 (Printing Interface): External variables search on Print page has not stable behaviour. | 4.7 |
| 31539 | TC 4.6 build 10. Folder 'TEKLYNX UMSS-MSGs 2015.02' was not removed during uninstallation process | 4.7 |
| 31535 | TC 4.6 build 11. Printing interface (firefox 48). "Load indicator" is displayed continuously | 4.7 |
| 31506 | TC 4.6 build 10. TCAdmin. GUI Customization. Problems with customer's company logo | 4.7 |
| 31298 | TC 4.6 TC Client Plugin does not work in Mozilla Firefox for Windows (64 bit) | 4.7 |
| 29865 | TC 4.6 Command Center - Connected Users. Instead of real user names, displayed their designation | 4.7 |
| 26784 | TC 4.6 Remote installation doesn't work if user is not 'Domain Administrator' | 4.7 |
| 31677 | TC 5.0 (Services): Services should use ad hoc user instead of built-in Administrator | 4.7 |

| | | |
|-------|--|-----|
| 31672 | TC 5.0 (Installers): Installer screen for service user configuration is required. | 4.7 |
| 31667 | TC 4.6 (Printing Interface): Date format validator is missing for variable value. | 4.7 |
| 31306 | TC 4.6 (Command Center): LA client is not installed remotely if Command Center is not launched as administrator. | 4.7 |
| 31288 | TC 4.6 (Command Center): Remote installation could not be performed on the machine from the trusted domain. | 4.7 |
| 31685 | TC 4.6 (Printing Interface): Infinite printing could be uncontrollable after logging out or any other postback action. | 4.7 |
| 32019 | TC 5.0 (Printing Interface): Intersection of Workstation, Printer and User logics should be applied on Print page. | 4.7 |
| 32065 | TC 4.6 (Web Admin): Review code handling retrieval of data from CODESOFT data link directory | 4.7 |
| 31861 | TC 4.6: Integrate Shepherd patches into CENTRAL 4.6 release | 4.7 |

TEKLYNX CENTRAL 4.6

| Task | New Features and Improvements | Version |
|------------------|---|---------|
| RTC4.60.00-01/08 | Multiple reports enhancements including new filters, fixes, optimization of big amounts of data and visualization | 4.6 |
| RTC4.60.00-10 | Teklynx Central enhancement: filter label history for a particular TC user or TC workstation | 4.6 |
| RTC4.60.00-12 | When the label is in approval process, display information about next step | 4.6 |
| RTC4.60.00-13 | When creating an approval rule, a setting is added in Label Archive Client snap-in to specify that the user who created the label will receive an email when the label is approved or denied | 4.6 |
| RTC4.60.00-13 | Make sure it's possible to use LABEL ARCHIVE with UAC turned on | 4.6 |
| RTC4.60.00-18 | It should be possible to filter LAS history by Job name using wildcard characters (it is required to specify full name) e.g.: part1*part2, ?part3 | 4.6 |
| RTC4.60.00-20 | Enhancement: The report uses a grey background color that makes the reading difficult after printing on certain printers | 4.6 |
| RTC4.60.00-21 | Fix: If user selects only Date / Time / User to generate the report (information that is not depend on the label) and none of the label variables, the report generated does not reflect this selection whatever the label versions | 4.6 |

| | | |
|---------------|--|-----|
| RTC4.60.00-22 | Report formatting fixes | 4.6 |
| RTC4.60.00-25 | Fix: When adding a Windows user in UMSS, the search box does not allow searching user by the last name specified in the Active Directory but just by the user logon name | 4.6 |
| RTC4.60.00-26 | Fix: When adding a Windows user in UMSS, the information for the user: firstname, last name, phone, mobile, email and locked, should be automatically updated in the add user dialog box | 4.6 |
| RTC4.60.00-09 | Admin doesn't consume license on server but it's not possible login from remote CODESOFT | 4.6 |
| RTC4.60.00-14 | Remove digital signature check in TEKLYNX CENTRAL, LAS and UMSS components | 4.6 |
| RTC4.60.00-15 | It's possible to install TEKLYNX CENTRAL with UAC turned on | 4.6 |
| RTC4.60.00-17 | LocalPrint distribution via GPO (avoid granting administrative rights on each client PC) | 4.6 |
| RTC4.60.00-19 | LocalPrint plugin compatibility for modern browsers with HTML5: Chrome and Firefox recent versions without ActiveX support | 4.6 |
| RTC4.60.00-24 | Ability to specify that a specific version of a label is no longer valid. Once that a version of a label has been invalidated, it should no longer be possible to print it, even if it is a final version. | 4.6 |
| RTC4.60.00-27 | The email content is configurable with dynamic data that are relevant with the approval process | 4.6 |
| RTC4.60.00-28 | Implement Heinrich Kopp patch in TC 4.6. Bring back Connections screen in External DB mode allowing user to set Printer/User logic | 4.6 |
| | Include all External DB patches to TC 4.6 (mostly Shepherd requests) | 4.6 |
| | Infinite Print option was removed | 4.6 |

| Ticket ID/ Defect ID | Fixes | Version |
|-------------------------|--|---------|
| 25788 | TC 4.60.00: Empty Naming values are saved to database as string with spaces | 4.6 |
| 26784 | TC 4.6 Remote installation doesn't work if user is not 'Domain Administrator' | 4.6 |
| 29865 | TC 4.6 Command Center - Connected Users. Instead of real user names, displayed their designation | 4.6 |
| 31298 | TC 4.6 TC Client Plugin does not work in Mozilla Firefox for Windows (64 bit) | 4.6 |
| 31350 | TC 4.6 (WebAdmin. External DB): "Like" operator is ignored during SQL query | 4.6 |

| | | |
|-------|--|-----|
| | processing on Filters page. | |
| 31504 | TC 4.6 Build10. Uninstall build 9 - install build 10: problems with license manager | 4.6 |
| 31506 | TC 4.6 build 10. TCAdmin. GUI Customization. Problems with customer's company logo | 4.6 |
| 31532 | TC 4.6 (Printing Interface). Message about Client Plugin version mismatch is absent on Login page. | 4.6 |
| 31533 | TC 4.6 (Printing Interface). Client plugin is not installed as Chrome extension in a case of SSL communication. | 4.6 |
| 31535 | TC 4.6 build 11. Printing interface (firefox 48). "Load indicator" is displayed continuously | 4.6 |
| 31539 | TC 4.6 build 10. Folder 'TEKLYNX UMSS-MSGs 2015.02' was not removed during uninstallation process | 4.6 |
| 31653 | TC 4.6 (Printing Interface): External variables search on Print page has not stable behaviour. | 4.6 |
| 31654 | TC 4.6 Firefox crashes after Local print. | 4.6 |
| 31657 | TC 4.6 (LAS). Check out window. The button Save behaves incorrectly when resizing | 4.6 |
| 31658 | TC 4.6 (Printing Interface): 'From Grid' variable status is conflicted with other available statuses on Print page. | 4.6 |
| 31660 | TC 4.6. UMSS. Permission 'Document in not valid state'. Change conditions (add 'state = Final' condition) | 4.6 |
| 31686 | TC 4.6 (Web Admin): Firefox: Administration website uses NPAPI plugin instead of dedicated add-on | 4.6 |
| 31687 | TC 4.6 (Printing Interface): Variables are cleared on Print page even if it is not allowed to modify them. | 4.6 |
| 31689 | TC 4.6 (Printing Interface, Web Admin): Custom logo is not available after guide-based version upgrade | 4.6 |
| 31690 | TC 4.6 (Local Print): Variables are not saved after local print on Print page. | 4.6 |
| 31691 | TC 4.6 (Web Admin): Label Search doesn't work properly on Printer Logic tab. | 4.6 |
| 31820 | TC 4.6 (Local Print): Chrome: Local Print features are not functional on Reprint page. | 4.6 |
| 31861 | TC 4.6: Integrate Shepherd patches into CENTRAL 4.6 release | 4.6 |
| 31872 | TC 4.6 (Codesoft). Codesoft is crashed if the user is loggen to LAS (2 cases) | 4.6 |
| 31924 | TC 4.6 (Version Upgrade): UMSS: Custom user groups from TC 4.5 are not available after upgrade | 4.6 |
| 31935 | TC 4.6. Connections (web). If the admin deleted the connection, the user will anyway be able to work with Printing Interface | 4.6 |
| 31936 | TC 4.6 (LAS 2015.02). Check out, History. etc. If the table is sorted by any column, the | 4.6 |

| | | |
|-------|---|-----|
| | search does not work | |
| 31942 | TC 4.6. Printing Interface. Local Print. Sometimes Local Print does not generate history records (in LAS DB) (unstable bug) | 4.6 |
| 31953 | TC 4.6 (External DB): Custom value in editable drop down list on Print page is not applied to preview. | 4.6 |
| 31971 | TC 4.6 Reports. Fields TCUser and TCWorkstation are not filled | 4.6 |
| 32011 | TC 4.6 (External DB): Product/Workorder variables logic is not applied during Print All and Local Print All operations. | 4.6 |
| 32013 | TC 4.6 (External DB): Queued Print Request failed to be created in External DB mode. | 4.6 |
| 32029 | TC 4.6 (External DB): Print All: User-selected dataset values are not retained for selected label | 4.6 |
| 32060 | TC 4.6 (External DB): Workorder variable initialization leads to error message | 4.6 |
| 32065 | TC 4.6 (Web Admin): Review code handling retrieval of data from CODESOFT data link directory | 4.6 |
| 32172 | TC 4.6. DVD interface. Supplementary manuals. Small IE problem | 4.6 |
| 32187 | TC 4.6 (Command Center). Add info about .NET Framework 4.5 in remote installation window | 4.6 |

TEKLYNX CENTRAL 4.5

| Task | New Features and Improvements | Version |
|---------------|---|---------|
| | NEW TC 4.5 has new Licensing system based on application groups. Please review TC_450_Licensing_Guide.pdf to learn about new licenses consumption | 4.5 |
| RTC4.50.00-01 | NEW Windows Print Spooler is presented | 4.5 |
| RTC4.50.00-05 | NEW Date type variables added | 4.5 |
| RTC4.50.00-06 | NEW Language selection added in Command Center (English or French) | 4.5 |
| RTC4.50.00-07 | NEW LocalPrint can be installed remotely via Command Center | 4.5 |
| RTC4.50.00-08 | NEW CODESOFT, LA Client, LocalPrint can be installed remotely via Command Center using the list of PCs or IP addresses | 4.5 |
| RTC4.50.00-11 | NEW Ability to kick user session in Administrative application | 4.5 |

| | | |
|------------------|---|-----|
| RTC4.50.00-12 | NEW Batch printing feature | 4.5 |
| RTC4.50.00-14 | NEW Ability to associate multiple labels with multiple printers in printer logic | 4.5 |
| RTC4.50.00-20 | NEW Ability to associate printer with a label directly in Printer logic | 4.5 |
| RTC4.50.00-02/03 | Licensing enhancements. Applications consume licenses instead of user groups. Learn more in TC_450_Licensing_Guide | 4.5 |
| RTC4.50.00-04 | Print All button can be shown/hidden | 4.5 |
| RTC4.50.00-09 | Configure workstation logic to work with a similarly named or set of IP's or workstation names. EXAMPLE. If your workstation name starts with USA, you can make it have access to US only labels. | 4.5 |
| RTC4.50.00-10 | Bunch of LocalPrint optimization patches is embedded in TC 4.5 | 4.5 |
| RTC4.50.00-15 | When browser is closed, the user is logged off | 4.5 |
| RTC4.50.00-17 | Embed LocalPrint patches for Bella | 4.5 |
| RTC4.50.00-18 | Customization GUI and logo fixes | 4.5 |
| RTC4.50.00-19 | Product variable enhancements: split value in two parts. First portion of the number to lookup a product or label, and the second portion to populate the variable | 4.5 |
| RTC4.50.00-21 | Max label name length enhancements | 4.5 |
| RTC4.50.00-22 | Focus on product box after the login is complete | 4.5 |
| RTC4.50.00-23 | The ability to enable and disable the autocomplete in the product box | 4.5 |
| RTC4.50.00-24 | The Print All button should use the quantity typed into the quantity box | 4.5 |
| RTC4.50.00-27 | TC 4.5 validates required IIS roles during installation | 4.5 |
| RTC4.50.00-31 | Bugfixing: ACDesigners group that doesn't provide access to the history pane of the approval actions | 4.5 |
| RTC4.50.00-35 | Possibility for the local print to accept https connections when browser is IE (for the moment it works with chrome and FireFox only) | 4.5 |

| | | |
|---------------|--|-----|
| RTC4.50.00-36 | Preview image should load using the Selected Printer driver rather than the Teklynx Central Preview driver | 4.5 |
| RTC4.50.00-37 | Include all Johnson patches to TC 4.5 | 4.5 |

| Ticket ID/ Defect ID | Fixes | Version |
|-------------------------|---|---------|
| BTC4.50.00-01 | Optimize UMSS to browse big domains | 4.5 |
| BTC4.50.00-02 | Permission fixes for History tab of User Actions dialog | 4.5 |
| BTC4.50.00-03 | Ability to delete variable that was added via TC Administrative Interface | 4.5 |
| BTC4.50.00-04 | Add save/cancel button on Variables dialog | 4.5 |
| BTC4.50.00-05 | Remove case sensitivity of variables to match CODESOFT behavior | 4.5 |
| BTC4.50.00-06 | It is possible to create a new draft version of a label while it is already submitted for approval | 4.5 |
| BTC4.50.00-07/08 | Ability to install LocalPrint via Group Policy | 4.5 |
| BTC4.50.00-10 | When working with WorkOrders it should be possible to configure TEKLYNX CENTRAL to associate a label variable with the WorkOrder selected and also with the Product selected. | 4.5 |
| BTC4.50.00-11 | When an approval rule is configured for sending emails and when it is used on the check in of the label, it would be nice to automatically check the "email sending" option. | 4.5 |

TEKLYNX CENTRAL 4.2

| Task | New Features and Improvements | Version |
|------|--|---------|
| | <p>TEKLYNX CENTRAL 4.2 has the same features set as regular TEKLYNX CENTRAL 4.0 and presents enhanced External Database functionality.</p> <p>The use cases are explained in "TC_510_ExternalDB_Administrator_Guide" and</p> | 4.2 |

| | | |
|--|---|--|
| | "TC_510_ExternalDB_User_Guide" files on this DVD. | |
|--|---|--|

| Ticket ID/ Defect ID | Fixes | Version |
|-------------------------|--|---------|
| 17255 | TC 4.0, TC 3.0 (Web Admin): Date is the static search criteria for Reprint page | 4.2 |
| 19872 | TC 4.0, TC 3.01, TC 3.01 CFR/GHS (Local Print ActiveX): ActiveX control is signed incorrectly, publisher could not be verified | 4.2 |
| 19900 | TC 4.0 (Installation): Unhandled exception during installation of Printing Interface | 4.2 |
| 19915 | TC 4.0 (Web Admin): NullReferenceException is thrown after logon attempt | 4.2 |
| 19916 | TC 4.0 (Web Admin): Processing error occurred when navigating to Labels page | 4.2 |
| 19918 | TC 4.0 (Web Admin): Top menu contains broken URLs | 4.2 |
| 19925 | TC 4.0 (Web Admin): Labels page: Unhandled exception - Attempt to add a value without having an existing pick list | 4.2 |
| 19927 | TC 4.0 (Web Admin): Pick Lists popup: Values datagrid is not cleared after deleting the pick list | 4.2 |
| 19933 | TC 4.0 (Web Admin): Connections page: Unhandled exception - Error page is loaded with enabled Workstation logic, User logic, or both | 4.2 |
| 19941 | TC 4.0 (Printing Interface): Login page: User Name field doesn't contain value with enabled Windows Authentication checkbox | 4.2 |
| 19943 | TC 4.0 (Printing Interface, GUI): Print page: Instant search results box is not properly displayed in Internet Explorer | 4.2 |
| 19971 | TC 3.01, TC 4.0: Localization issue: LABEL ARCHIVE service will fail to start if current system date format is not US-alike | 4.2 |
| 20115 | TC 4.0 (Installation): Printing Interface web applications won't install without IIS 6 Management Compatibility features (IIS 7/8) | 4.2 |
| 20124 | TC 4.0 (Printing Interface): Selected pick list's values are not printed or saved | 4.2 |
| 20127 | TC 4.0 (Web Admin): Visible UI bugs on GUICustomization.aspx | 4.2 |
| 20128 | TC 4.0 (Web Admin): GUI: Size of user controls on Labels.aspx page | 4.2 |
| 20129 | TC 4.0 (Web Admin): GUI: Login.aspx page in Internet Explorer 10 | 4.2 |
| 20131 | TC 4.0 (Web Admin): GUI: Popup dimensions on several pages | 4.2 |
| 20132 | TC 4.0 (Printing Interface): GUI bugs on PagePrint.aspx | 4.2 |
| 20135 | TC 4.0 (Printing Interface): GUI: Page content is not visible when popup is displayed (Internet Explorer 9/10) | 4.2 |
| 20137 | TC 4.0 (Printing Interface): NullReferenceException is thrown when printing label with linked data source | 4.2 |

| | | |
|-------|--|-----|
| 20138 | TC 4.0 (Web Admin): Controls on Connections page are active when correspondent logics are not enabled | 4.2 |
| 20148 | TC 4.0 (Web Admin): GUI: "Product variable" popup style | 4.2 |
| 20149 | TC 4.0 (Printing Interface): PagePrint.aspx: Preview popup is not displayed on the second call | 4.2 |
| 20157 | TC 4.0 (Installation): Printing Interface installation on Oracle 11g database failed | 4.2 |
| 20640 | TC 3.01, TC 4.0 (Printing Interface, Localization): Input file for SENTINEL is generated in ANSI encoding | 4.2 |
| 20909 | TC 4.0 Error occured. Data configuration - > labels | 4.2 |
| 20921 | TC 4.0 (WEB ADMIN) Error appears on GUI Customization page | 4.2 |
| 20922 | TC 4.0 (WEB ADMIN) Header disappeared after chenging custumization | 4.2 |
| 20923 | TC 4.0 (WEB ADMIN) Unable to logut in IE 10 | 4.2 |
| 20929 | TC 4.0 (Printing Interface) Under the search field smal dot is shown | 4.2 |
| 20945 | TC 4.0 (UMSS) Unable to create or edit user. | 4.2 |
| 20946 | TC 4.0 (Web Admin) GUI Customization - After we change logo font is changed to black. | 4.2 |
| 20947 | TC 4.0 (Web Admin) Text on login button in Russian language should be centered | 4.2 |
| 20948 | TC 4.0 (web admin) Combobox for language choose shown incorrectly | 4.2 |
| 20949 | TC 4.0 (web admin) GUI customization - Large images cannot be chosen as log. No warning or error displayed | 4.2 |
| 20950 | TC 4.0 (web admin) Work orders - Assign product popup - Search field should be a bit longer on the same line with combobox | 4.2 |
| 20951 | TC 4.0 (web admin) Labels - error appeared if we try to search label | 4.2 |
| 20952 | TC 4.0 (web admin) Default page is empty | 4.2 |
| 20953 | TC 4.0 (Web admin) Connections - Paging appeared after empty serach result | 4.2 |
| 20955 | TC 4.0 (web admin) Naming - Workstation tab was not changed in Data Configuratipon -> Connections | 4.2 |
| 20956 | TC 4.0 (Web admin) Naming - Naming values should be loaded from cache instead of DB | 4.2 |
| 20957 | TC 4.0 (Web Admin) Data configuration - Connections - Printers order buttons does not work properly | 4.2 |
| 20959 | TC 4.0 (web admin) Data configuration - connections - Error appeared if we check both "Bind to Work orders" "Only apply to printers" | 4.2 |
| 20978 | TC 4.0 (Protection): Command Center does not update license status after activation. | 4.2 |

| | | |
|-------|---|-----|
| | Refresh failed. | |
| 20982 | TC 4.0 (Printing Interface): Print page: Preview operation is not stable | 4.2 |
| 20985 | TC 4.0 (Installation): LABEL ARCHIVE failed to start during installation and aborted the process | 4.2 |
| 20986 | TC 4.0 (Web Admin) Data Configuration - Work orders - Search field becomes uneditable after search | 4.2 |
| 20987 | TC 4.0 (Web Admin) Data configuration - connections - Printer logic - Search process never ends if we search fake label | 4.2 |
| 20998 | TC 4.0 (Installation) Database creation error during installation with oracle DB | 4.2 |
| 21002 | TC 4.0 (Protection): Incorrect license expiration tracking behavior in Command Center | 4.2 |
| 21014 | TC 4.0 (Web Admin) GUI Customization is not localized for French version | 4.2 |
| 21016 | TC 4.0 (Local printing plugin) Local printing plugin should be renamed to "TEKLYNX CENTRAL CLIENT PLUGIN" | 4.2 |
| 21017 | TC 4.0 (Printing Interface) Settings for printer does not work correctly on client workstation | 4.2 |
| 21026 | TC 4.0 (Printing Interface) Workstation should not be proposed to choose if workstation logic is turned off | 4.2 |
| 21032 | Tc 4.0 (Web admin) (Printing Interface) No redirect if user logged in and open in new window one of sites. | 4.2 |
| 21039 | TC 4.0 (Printing Interface) Unable to preview document label. | 4.2 |
| 21040 | TC 4.0 (Printing interface) MessageBox board should not appear if no text inputted in admin area | 4.2 |
| 21047 | TC 4.0 (Printing interface) "Print all" does not work properly. | 4.2 |
| 21054 | TC 4.0 (Printing interface) Work orders cannot be found on reprint page | 4.2 |
| 21055 | TC 4.0 (Printing interface) Local print does not work | 4.2 |
| 21080 | TC 4.0 (Label archive client) Check in as dialog - button is not shown | 4.2 |
| 21112 | TC 4.0 (external database) Error appear after we search work order on printing page | 4.2 |
| 21118 | TC 4.0 (external database) Product search does not work properly on printing page | 4.2 |
| 21126 | TC 4.0 (external database) Print all button does not work properly | 4.2 |
| 21127 | TC 4.0 (external database) Connections - printer logic - list of labels shown incorrectly | 4.2 |
| 21145 | TC 4.0 (printing interface) Message box area is showing incorrect text after refreshing the page | 4.2 |
| 21174 | TC 4.0 (external data base) paging on products page does not work properly. | 4.2 |
| 21186 | TC 4.0 (external database) List of labels shown incorrectly | 4.2 |

| | | |
|-------|--|-----|
| 21195 | TC 4.0 (Printing Interface): Custom logo is not displayed on Printing Interface website | 4.2 |
| 21198 | TC 4.0 (Printing Interface): Incorrect behavior of tracking print requests with variables from external source | 4.2 |
| 21199 | TC 4.0 (External Database): Error message displayed when WorkOrders, Products or Labels page is requested | 4.2 |
| 21202 | TC 4.0 (External Database): Error occurs when adding existing filter on ProductsOLEDB.aspx page | 4.2 |
| 21203 | TC 4.0 (Protection): LABEL ARCHIVE service periodically stops (using SDX demo dongle) | 4.2 |
| 21246 | TC 4.0 (Printing interface) Message box border is visible when option is disabled | 4.2 |
| 21250 | TC 4.0 (Web Admin; Printing interface) Session expired after 6 hours. | 4.2 |
| 21349 | TC 4.0 (Printing interface): Preview of label is taking based on latest version from LAS DB | 4.2 |
| 21413 | TC 4.0 (External Database): "Hide Printed Labels" does not work with external databases | 4.2 |
| 21414 | TC 4.0 (External Database): Product variables are not populated with product value from external datasource | 4.2 |

TEKLYNX CENTRAL 4.0

| Task | New Features and Improvements | Version |
|--------------|---|---------|
| R-TC301-0001 | NEW Use of variables Pick lists in the Internet Printing Interface | 4.0 |
| R-TC301-0002 | NEW Variables input masks functionality | 4.0 |
| R-TC301-0003 | NEW The ability to have a print page message box display in the Printing Interface. This message box can be used to show instructions. | 4.0 |
| R-TC301-0005 | NEW "Automatic site log off" feature | 4.0 |
| R-TC301-0006 | NEW "Display preview" option | 4.0 |
| R-TC301-0007 | NEW Autocheck Win authentication on logon | 4.0 |

| | | |
|---------------|---|-----|
| R-TC301-0008 | NEW Alphabetize all products and workorders | 4.0 |
| R-TC301-00010 | NEW The ability to select whether or not the Local Print option is displayed | 4.0 |
| R-TC301-00012 | NEW “Disable Print button” option | 4.0 |
| R-TC301-00013 | NEW Option to select the printer user would like to print after he selects the label | 4.0 |
| R-TC301-00015 | NEW The ability to use WINDOWS authentication and have to type in Windows password to authenticate | 4.0 |
| R-TC301-00016 | NEW Set synchronization between workstation, user, printers logic via External databases | 4.0 |
| R-TC301-00017 | NEW The ability to use a variables datagrid in the Printing Interface | 4.0 |
| R-TC301-00018 | NEW The ability to change the color scheme and add your own company logo to the Printing Interface | 4.0 |
| R-TC301-00019 | NEW Product value can populate a variable on the label user associate with that product | 4.0 |
| R-TC301-00020 | NEW Search boxes with instant search and auto completion on Administration and Printing Interfaces | 4.0 |
| R-TC301-00021 | NEW “Hide printed labels” option | 4.0 |
| R-TC301-00023 | NEW New Options screen design to improve user experience | 4.0 |
| R-TC301-00011 | Ability to reorder printers for each workstation or users. This will affect both the user logic and the workstation | 4.0 |
| R-TC301-00022 | Optimize Connections screen GUI to improve usability | 4.0 |

| Ticket ID/ Defect ID | Fixes | Version |
|-------------------------|--|---------|
| 17255 | TC 4.0, TC 3.0 (Web Admin): Date is the static search criteria for Reprint page | 4.0 |
| 19872 | TC 4.0, TC 3.01, TC 3.01 CFR/GHS (Local Print ActiveX): ActiveX control is signed incorrectly, publisher could not be verified | 4.0 |
| 19900 | TC 4.0 (Installation): Unhandled exception during installation of Printing Interface | 4.0 |

| | | |
|-------|--|-----|
| 19915 | TC 4.0 (Web Admin): NullReferenceException is thrown after logon attempt | 4.0 |
| 19916 | TC 4.0 (Web Admin): Processing error occurred when navigating to Labels page | 4.0 |
| 19918 | TC 4.0 (Web Admin): Top menu contains broken URLs | 4.0 |
| 19925 | TC 4.0 (Web Admin): Labels page: Unhandled exception - Attempt to add a value without having an existing pick list | 4.0 |
| 19927 | TC 4.0 (Web Admin): Pick Lists popup: Values datagrid is not cleared after deleting the pick list | 4.0 |
| 19933 | TC 4.0 (Web Admin): Connections page: Unhandled exception - Error page is loaded with enabled Workstation logic, User logic, or both | 4.0 |
| 19941 | TC 4.0 (Printing Interface): Login page: User Name field doesn't contain value with enabled Windows Authentication checkbox | 4.0 |
| 19943 | TC 4.0 (Printing Interface, GUI): Print page: Instant search results box is not properly displayed in Internet Explorer | 4.0 |
| 19971 | TC 3.01, TC 4.0: Localization issue: LABEL ARCHIVE service will fail to start if current system date format is not US-alike | 4.0 |
| 20115 | TC 4.0 (Installation): Printing Interface web applications won't install without IIS 6 Management Compatibility features (IIS 7/8) | 4.0 |
| 20124 | TC 4.0 (Printing Interface): Selected pick list's values are not printed or saved | 4.0 |
| 20127 | TC 4.0 (Web Admin): Visible UI bugs on GUICustomization.aspx | 4.0 |
| 20128 | TC 4.0 (Web Admin): GUI: Size of user controls on Labels.aspx page | 4.0 |
| 20129 | TC 4.0 (Web Admin): GUI: Login.aspx page in Internet Explorer 10 | 4.0 |
| 20131 | TC 4.0 (Web Admin): GUI: Popup dimensions on several pages | 4.0 |
| 20132 | TC 4.0 (Printing Interface): GUI bugs on PagePrint.aspx | 4.0 |
| 20135 | TC 4.0 (Printing Interface): GUI: Page content is not visible when popup is displayed (Internet Explorer 9/10) | 4.0 |
| 20137 | TC 4.0 (Printing Interface): NullReferenceException is thrown when printing label with linked data source | 4.0 |
| 20138 | TC 4.0 (Web Admin): Controls on Connections page are active when correspondent logics are not enabled | 4.0 |
| 20148 | TC 4.0 (Web Admin): GUI: "Product variable" popup style | 4.0 |
| 20149 | TC 4.0 (Printing Interface): PagePrint.aspx: Preview popup is not displayed on the second call | 4.0 |
| 20157 | TC 4.0 (Installation): Printing Interface installation on Oracle 11g database failed | 4.0 |
| 20640 | TC 3.01, TC 4.0 (Printing Interface, Localization): Input file for SENTINEL is generated in ANSI encoding | 4.0 |

| | | |
|-------|--|-----|
| 20909 | TC 4.0 Error occurred. Data configuration - > labels | 4.0 |
| 20921 | TC 4.0 (WEB ADMIN) Error appears on GUI Customization page | 4.0 |
| 20922 | TC 4.0 (WEB ADMIN) Header disappeared after changing customization | 4.0 |
| 20923 | TC 4.0 (WEB ADMIN) Unable to logut in IE 10 | 4.0 |
| 20929 | TC 4.0 (Printing Interface) Under the search field smal dot is shown | 4.0 |
| 20945 | TC 4.0 (UMSS) Unable to create or edit user. | 4.0 |
| 20946 | TC 4.0 (Web Admin) GUI Customization - After we change logo font is changed to black. | 4.0 |
| 20947 | TC 4.0 (Web Admin) Text on login button in Russian language should be centered | 4.0 |
| 20948 | TC 4.0 (web admin) Combobox for language choose shown incorrectly | 4.0 |
| 20949 | TC 4.0 (web admin) GUI customization - Large images cannot be chosen as log. No warning or error displayed | 4.0 |
| 20950 | TC 4.0 (web admin) Work orders - Assign product popup - Search field should be a bit longer on the same line with combobox | 4.0 |
| 20951 | TC 4.0 (web admin) Labels - error appeared if we try to search label | 4.0 |
| 20952 | TC 4.0 (web admin) Default page is empty | 4.0 |
| 20953 | TC 4.0 (Web admin) Connections - Paging appeared after empty serach result | 4.0 |
| 20955 | TC 4.0 (web admin) Naming - Workstation tab was not changed in Data Configuratiopn -> Connections | 4.0 |
| 20956 | TC 4.0 (Web admin) Naming - Naming values should be loaded from cache instead of DB | 4.0 |
| 20957 | TC 4.0 (Web Admin) Data configuration - Connections - Printers order buttons does not work properly | 4.0 |
| 20959 | TC 4.0 (web admin) Data configuration - connections - Error appeared if we check both "Bind to Work orders" "Only apply to printers" | 4.0 |
| 20978 | TC 4.0 (Protection): Command Center does not update license status after activation. Refresh failed. | 4.0 |
| 20982 | TC 4.0 (Printing Interface): Print page: Preview operation is not stable | 4.0 |
| 20985 | TC 4.0 (Installation): LABEL ARCHIVE failed to start during installation and aborted the process | 4.0 |
| 20986 | TC 4.0 (Web Admin) Data Configuration - Work orders - Search field becomes uneditable after search | 4.0 |
| 20987 | TC 4.0 (Web Admin) Data configuration - connections - Printer logic - Search process never ends if we search fake label | 4.0 |
| 20998 | TC 4.0 (Installation) Database creation error during installation with oracle DB | 4.0 |

| | | |
|-------|--|-----|
| 21002 | TC 4.0 (Protection): Incorrect license expiration tracking behavior in Command Center | 4.0 |
| 21014 | TC 4.0 (Web Admin) GUI Customization is not localized for French version | 4.0 |
| 21016 | TC 4.0 (Local printing plugin) Local printing plugin should be renamed to "TEKLYNX CENTRAL CLIENT PLUGIN" | 4.0 |
| 21017 | TC 4.0 (Printing Interface) Settings for printer does not work correctly on client workstation | 4.0 |
| 21026 | TC 4.0 (Printing Interface) Workstation should not be proposed to choose if workstation logic is turned off | 4.0 |
| 21032 | Tc 4.0 (Web admin) (Printing Interface) No redirect if user logged in and open in new window one of sites. | 4.0 |
| 21039 | TC 4.0 (Printing Interface) Unable to preview document label. | 4.0 |
| 21040 | TC 4.0 (Printing interface) MessageBox board should not appear if no text inputted in admin area | 4.0 |
| 21047 | TC 4.0 (Printing interface) "Print all" does not work properly. | 4.0 |
| 21054 | TC 4.0 (Printing interface) Work orders cannot be found on reprint page | 4.0 |
| 21055 | TC 4.0 (Printing interface) Local print does not work | 4.0 |
| 21080 | TC 4.0 (Label archive client) Check in as dialog - button is not shown | 4.0 |
| 21112 | TC 4.0 (external database) Error appear after we search work order on printing page | 4.0 |
| 21118 | TC 4.0 (external database) Product search does not work properly on printing page | 4.0 |
| 21126 | TC 4.0 (external database) Print all button does not work properly | 4.0 |
| 21127 | TC 4.0 (external database) Connections - printer logic - list of labels shown incorrectly | 4.0 |
| 21145 | TC 4.0 (printing interface) Message box area is showing incorrect text after refreshing the page | 4.0 |
| 21174 | TC 4.0 (external data base) paging on products page does not work properly. | 4.0 |
| 21186 | TC 4.0 (external database) List of labels shown incorrectly | 4.0 |
| 21195 | TC 4.0 (Printing Interface): Custom logo is not displayed on Printing Interface website | 4.0 |
| 21198 | TC 4.0 (Printing Interface): Incorrect behavior of tracking print requests with variables from external source | 4.0 |
| 21199 | TC 4.0 (External Database): Error message displayed when WorkOrders, Products or Labels page is requested | 4.0 |
| 21202 | TC 4.0 (External Database): Error occurs when adding existing filter on ProductsOLEDB.aspx page | 4.0 |
| 21203 | TC 4.0 (Protection): LABEL ARCHIVE service periodically stops (using SDX demo dongle) | 4.0 |
| 21246 | TC 4.0 (Printing interface) Message box border is visible when option is disabled | 4.0 |

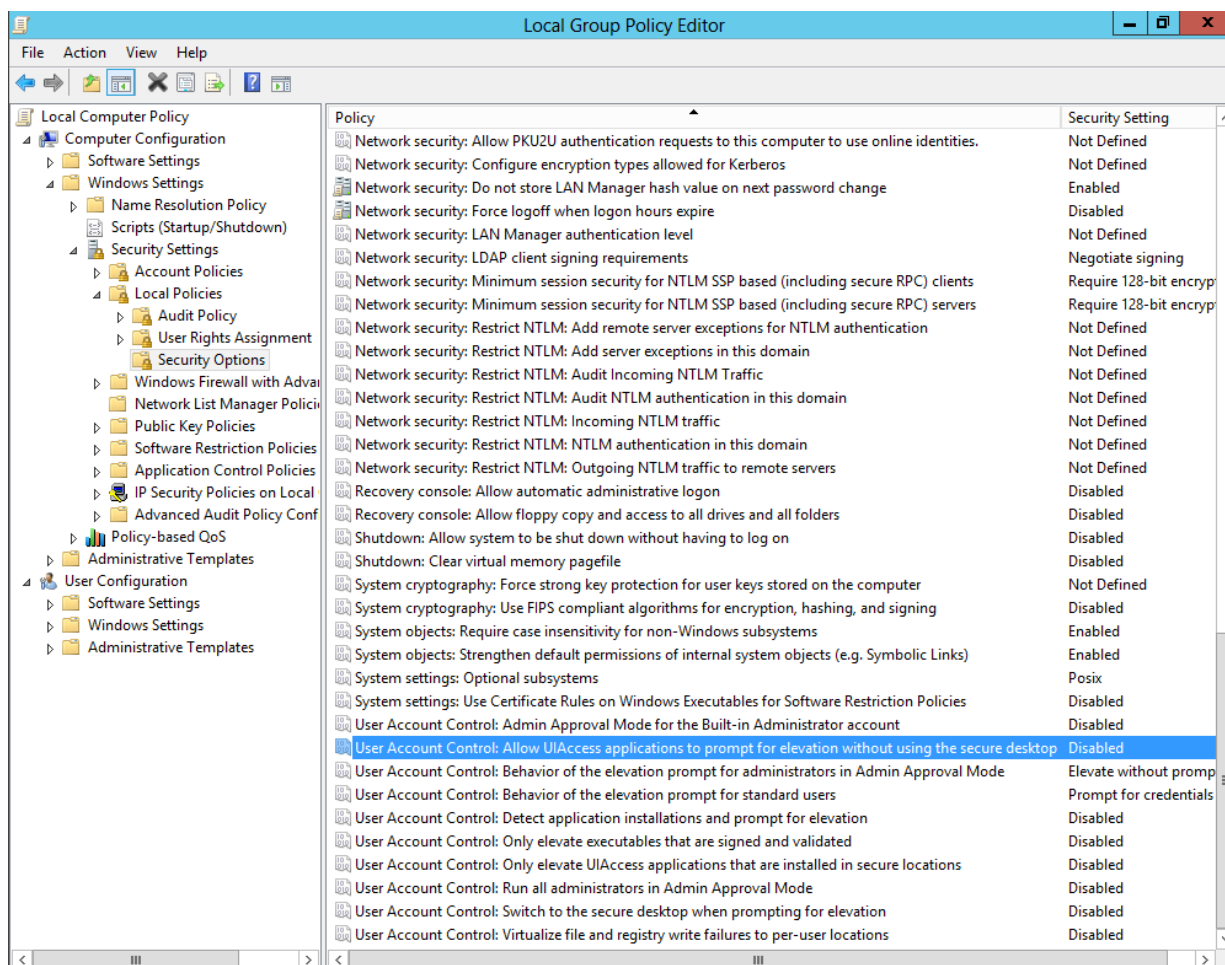
| | | |
|-------|---|-----|
| 21250 | TC 4.0 (Web Admin; Printing interface) Session expired after 6 hours. | 4.0 |
| 21349 | TC 4.0 (Printing interface): Preview of label is taking based on latest version from LAS DB | 4.0 |
| 21413 | TC 4.0 (External Database): "Hide Printed Labels" does not work with external databases | 4.0 |
| 21414 | TC 4.0 (External Database): Product variables are not populated with product value from external datasource | 4.0 |

[Back to Menu](#)

Known Limitations

It's recommended to restart PC after installation and TC activation.

- CODESOFT consumes 2 licenses on remote PCs – the second one is consumed by LAS. Remotely installed CODESOFT via Command Center prompts login screen twice.
- Upgrade is possible from TC 4.7 or higher.
- Installation steps: Services screen of Application Configuration Tool. It's not possible to provide Window user with empty password for Services log on.
- It's preferable to turn off **Windows Firewall, User Account Control and Antivirus** before installation (if possible).
- **User Account Control** on server systems like Windows Server 2012 should be also turned off in Local Group Policies.

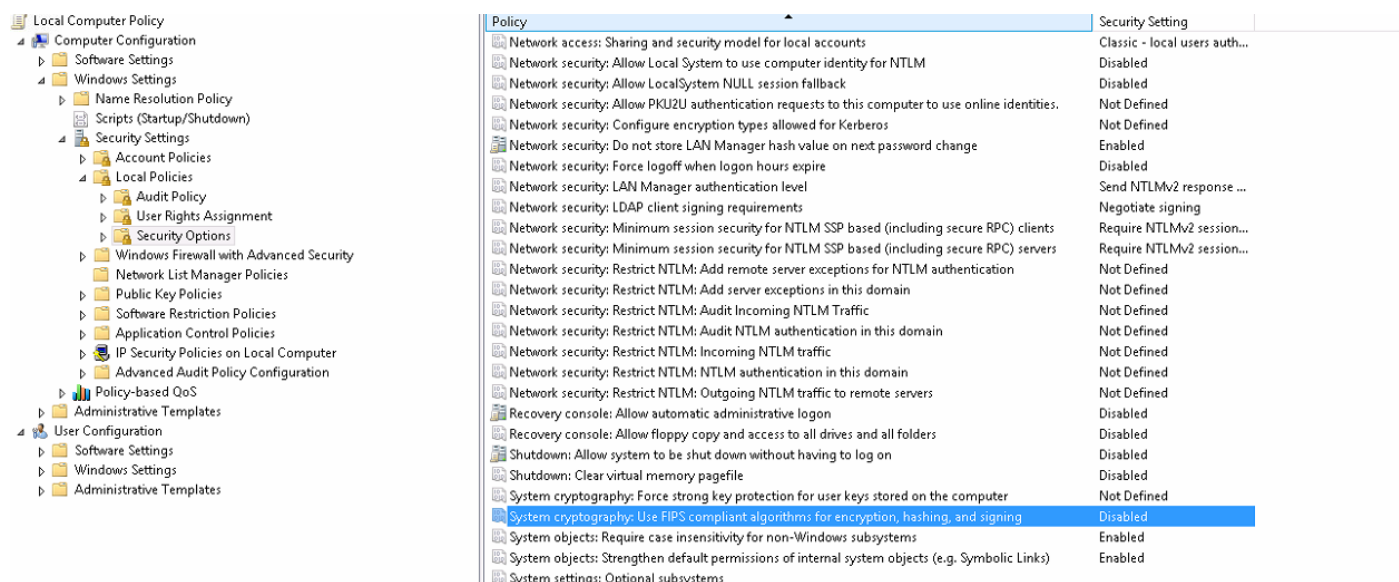


- For correct printing to file port on local PC, you need to launch LocalPrint from “named user” (not default SYSTEM or LocalSystem user).

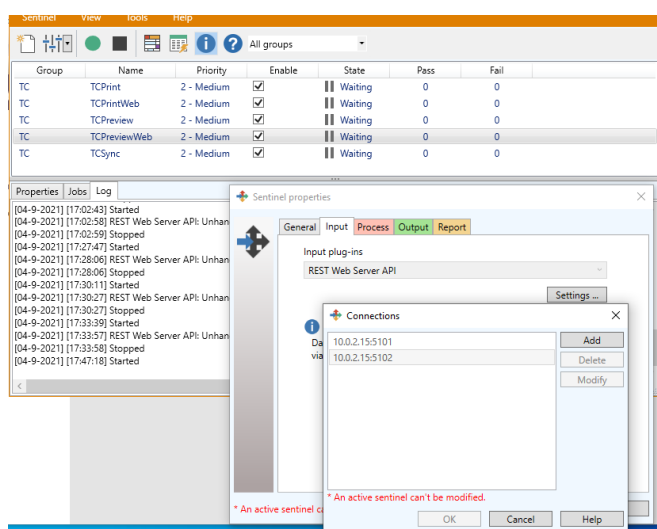
November 10, 2020—KB4586830 (OS Build 14393.4046)

Addresses a security vulnerability by preventing applications that run as a SYSTEM account from printing to local ports that point to a file. Failing print jobs log error 50, “The request is not supported.” in event ID 372 in the PrintService\Admin event log. To address this issue in the future, make sure your applications or services run as a specific user or service account.

- **Web Printing True Reprint** feature limitation: in some cases, reprint preview may be not correct, however correct data is sent to printer.
- **Reprint and Document History Writing in LAS:** it’s not possible to reprint jobs in Web Printing Interface if LAS history setting on turned off.
- **SQL Server:** if you install TC 7.0 services under local system account, this user should be granted enough permission in SQL Server Studio to work with TC databases.
- **SQL Server 2012:** Sysadmin server role should have NT AUTHORITY\SYSTEM membership.
- **SQL Server** password should not have hash sign # at the beginning of password (Installshield bug). Avoid any unusual characters.
- It’s strongly advised to turn off Windows Security option “**System Cryptography: Use FIPS compliant algorithms for encryption, hashing, and signing**”.
This option to may cause connectivity problems (LA, Printing Interface etc.) when it’s turned on by default in Local Computer.
Microsoft techs provide explanation for this option.
<http://blogs.technet.com/b/secguide/archive/2014/04/07/why-we-re-not-recommending-fips-mode-anymore.aspx>
<https://support.microsoft.com/en-us/kb/811833>



- **Remote Installation** of CODESOFT/LABEL ARCHIVE Client can be performed only in the same domain as launched Command Center.
- **Sentinel** first print usually takes more time because of Codesoft engine instantiation (cold start). Also Codesoft engine is re-instantiated each 4 hours and this causes temporary print speed decrease.
- It's not recommended to add new TCPreview and TCPrint Sentinels manually. They may lock default TC Sentinels.
- If computer IP configuration has been changed, it's needed to update Sentinel watches config too.



- After TC reinstall it's needed to re-add printers in Sentinel and check them again.
- TC can be reinstalled or upgraded under the same DB user only. Some categories permissions may be reverted to default (folders with alphanumeric names).
- When TC is installed on the language different from the default English, Sentinel Management tools still will be displayed in English. It's necessary to manually select preferred language in these applications.

- TC 7.0 PRINTING INTERFACE Web Site, TC 7.0 PRINTING INTERFACE Administration, SENTINEL 2022.00.01, LABEL ARCHIVE 2022.01.00 must be installed on the same PC. Three Sentinels will be created automatically – for printing, preview generation and infinite print. The watch folders for print sentinel must be “C:\Watch” and for preview sentinel - “C:\imgproc”.
- **ASP:** Windows Server 2012/Win 8: IIS should have the following features enabled: ASP.NET 4.8, и .NET 4.8 Extensibility.
- **ASP:** If the ASP Hosting Bundle prerequisite is installed before IIS, the bundle installation must be repaired. Run the Hosting Bundle installer again after installing IIS.
This setup is located on DVD under
\Software\TKCENTRALPACKAGETKCENTRAL\ISSetupPrerequisites\{3CC9E37B-7D73-4FBE-9AB8-626CEB4FDD29}\dotnet-hosting-3.1.13-win.exe.
- After TC is uninstalled, the Local Print component must be uninstalled from each workstation manually.
- Default PrintUser doesn't have enough rights to use actual Printing Interface because he's not a member of ACPrintUsers group. This PrintUser is mostly intended for Sentinel and consumes no license.
- If an external database is located on the network, it should be accessible with read/write permissions.
- If SENTINEL 2022 was not used for a period of time (10 minutes or more), getting a preview of a label after changing variables values might fail the first time. It will be shown from the second try on.
- When printing to a file (XPS, PDF, etc.), the file selection dialog could be displayed in a different desktop which can be accessed by Interactive Services dialog provided by these operation systems. This dialog is sometimes shown a certain period of time after clicking the Print button.
- Limitation for input strings in “Naming” feature is 30 characters. (Long strings may stretch UI).
- “Naming” feature may produce incorrect orthography in complex phrases on languages different from English.
- All Mobile devices that use the mobile version of TEKLYNX CENTRAL will send the same workstation name (HANDHELD). In the TEKLYNX CENTRAL Administration, when browsing workstations, this name will not be seen automatically and must be added manually for the correct workstation logic operation. Also, in License Manager, all users connected from Mobile devices will consume one license for the HANDHELD workstation. The same is applied for ClickPrint mobile application (iOS, Android).
- On some systems, Windows Authentication for Microsoft SQL Server does not work. It is recommended to use SQL server in the native or mixed authorization mode.
- The Administrator can change TC language settings in the Command Center, however changing the corresponding registry key is required to apply new language for all products.
- License will be not released immediately if user will close the Printing Interface browser window. Instead, it's highly recommended to use “Logout” buttons.
- Local Print feature uses only one Sentinel which processes all incoming requests in the queue. Printing performance may be affected by big amount of simultaneous printing jobs from different remote clients.
- There is known TKComm printing issue: big quantity of complex labels on USB printers produces “cannot

connect printer" error. Fix will be provided as a patch.

- CODESOFT installed on the remote workstation through Command Center's remote installation feature doesn't allow changing password which is expired using UMSS login form. The password can be changed in any other application (CODESOFT on server side, UMSS/MSGs administration console).
- If user changes the license type (for example, software key to hard key) it's needed to refresh the Licensing service in Command Center or restart it manually.
- Window popups of TEKLYNX CENTRAL Administration and Printing Interface are closed after 15 minutes of inactivity.
- Mobile Application & Identity Server connectivity problems or "Invalid issuer" error.
Locate c:\Program Files (x86)\Teklynx\IdentityProvider\appsettings.Production.json
Set default issuer with the following line:

```
{  
  "IdentityServer": {  
    "IssuerUri": "urn:sso.company.com",
```
- **Oracle** limitations:
 - It's recommended to install Oracle Client x32 edition on both x32/x64 systems.
 - Basic Oracle connection doesn't require additional software. For TNS connection, install Oracle Instant Client 12.2.0.1.0 (provided on TC DVD) after TC 7.0 and .NET 4.8 installations.
 - Windows authentication may fail if Oracle database is adjusted to use case-sensitive strings. UMSS keeps Windows user credentials in lowercase ("domain/username"), but checking the "Windows Authentication" checkbox on login forms will substitute workstation domain in uppercase ("DOMAIN/username"). To avoid failures during login, change uppercase characters to lowercase.
- **TC 7.0 External DB** mode limitations:
 - Input masks are not supported in External DB mode.
 - "Hide Printed Labels" is not supported in External DB mode.
 - The External Database connectivity has been tested with SQL Server mostly, other data sources, including Microsoft Access, Microsoft Excel and Oracle, were not thoroughly tested as external databases and may cause instabilities in the system.
 - Populate product variable feature doesn't work in conjunction with Filters mode.
- **UMSS** limitations:
 - UMSS does not support un-registration of applications, only re-registration is available.

Compatibility with other TEKLYNX Software

TEKLYNX CENTRAL v7.0 is compatible and fully tested to work with the following TEKLYNX software packages:

- CODESOFT 2022.00.01
- SENTINEL 2022.00.01
- LABEL ARCHIVE 2022.01.00 (TC 7.0 package version)
- UMSS/MSGs 2022.01.00 (TC 7.0 package version)

Copyright 2023 TEKLYNX Corporation SAS. All rights reserved. TEKLYNX and its products are trademarks or registered trademarks of Teklynx Corporation SAS. All other brands and product names are the trademarks of their respective owners.

This release notes document is for informational purposes only. Product specifications are likely to change.

[Back to Menu](#)



France
+33 (0) 562 601 080

Germany
+49 (0) 2103 2526 0

Singapore
+65 6908 0960

United States
+1 (414) 837 4800

Copyright 2023 TEKLYNX Corporation SAS. All rights reserved. LABEL MATRIX, LABELVIEW, CODESOFT, LABEL ARCHIVE, SENTINEL, PRINT MODULE, BACKTRACK, TEKLYNX CENTRAL, TEKLYNX, and Barcode Better are trademarks or registered trademarks of TEKLYNX Corporation SAS or its affiliated companies. All other brands and product names are trademarks and/or copyrights of their respective owners.

www.teklynx.com

