



# INSTALLATION GUIDE

The information in this manual is not binding and may be modified without prior notice.

Supply of the software described in this manual is subject to a user license. The software may not be used, copied or reproduced on any medium whatsoever, except in accordance with this license.

No portion of this manual may be copied, reproduced or transmitted by any means whatsoever, for purposes other than the personal use of the buyer, unless written permission is obtained from Teklynx Corporation SAS.

© 2021 Teklynx Corporation SAS.

All rights reserved.

TEKLYNX and its products are trademarks or registered trademarks of Teklynx Corporation SAS. All other brands and product names are the trademarks of their respective owners.

---

# Table of Contents

---

**Chapter 1: Getting Started** ..... **1-1**

    About this Manual ..... 1-1

    System and Server Requirements ..... 1-2

**Chapter 2: Installation** ..... **2-1**

    Welcome! ..... 2-1

    About TEKLYNX CENTRAL ..... 2-1

    Installing TEKLYNX CENTRAL ..... 2-2

    Installing Software on a Client Workstation from Server Push. .... 2-11

    Installing Client Applications Manually. .... 2-12

## CHAPTER 1

# Getting Started

---

## About this Manual

This manual is designed to provide you with the basic information you need to install TEKLYNX CENTRAL.

### Typographic Conventions

This manual uses the following conventions to distinguish between different types of information:

- Terms taken from the interface itself, such as menu names, commands and button names appear in **bold**.
- Keys appear in uppercase, as in the following example:  
“Press the SHIFT key.”
- Numbered lists indicate a procedure to follow.
- The sequence for selecting a command from a menu will be described, but a button is also available for many functions.
- Angle brackets <> indicate system setup information that must be entered by keyboard. Enter only the information, not the brackets.

## System and Server Requirements

<b>Processor</b>	<b>Minimum:</b> 2 GHz or faster <b>Recommended:</b> Duel/Quad 2 GHz or faster
<b>Operating System</b>	<ul style="list-style-type: none"><li>• Windows Server 2012/2012 R2 x64</li><li>• Windows Server 2016 x64</li><li>• Windows Server 2019 x64</li><li>• Windows Server Core 2016/2019 x64</li></ul>
<b>Memory</b>	<b>Minimum:</b> 4 GB of free RAM (does not include database server) <b>Recommended:</b> 8 GB of free RAM (does not include database server)
<b>Hard Disk Space</b>	<b>Minimum:</b> 1.5 GB of free disk space <b>Recommended:</b> 20 GB of free disk space
<b>Supporting Software</b>	<b>On the server:</b> Microsoft Internet Information Services (IIS) 8.0 or higher Microsoft SQL Server 2012/2014/2016/2017/2019, Oracle 12.2 or higher, Requires Oracle Client 12.2.0.1.0, .NET Framework 4.8 (Server and Client), ASP .NET 4.8  <b>On the print client:</b> Microsoft Edge 93.0, Mozilla Firefox 91.0 (x32), Google Chrome 93.0 (x32) or later  <b>On the label designer client:</b> Microsoft Edge 93.0, Mozilla Firefox 91.0 (x32), Google Chrome 93.0 (x32) or later .NET Framework 4.8 Microsoft Data Access Components (MDAC) 2.8 or later Adobe Acrobat Reader X or later
<b>Video Card</b>	DirectX 9.0 minimum, Display minimum resolution: 1366x768

<b>Additional Requirements</b>	Administrator rights to the computer used during installation
--------------------------------	---

**Other Product Documentation**

Supplementary manuals for CODESOFT, LABEL ARCHIVE, SENTINEL, and the Printing Interface are provided with the installer files. For more detailed instructions on these products, refer to the corresponding product documentation.

User and administration manuals for these applications are also available online at [www.teklynx.com](http://www.teklynx.com).

## CHAPTER 2

# Installation

---

## Welcome!

Thank you for purchasing TEKLYNX CENTRAL. This installation guide contains information on how to install TEKLYNX CENTRAL.

## About TEKLYNX CENTRAL

TEKLYNX CENTRAL manages enterprise labeling users, licenses, and installation within one interface. The Command Center coordinates TEKLYNX' proven label design, printing, security, and tracing applications to simplify administration.

TEKLYNX CENTRAL offers the following features:

**Label Design Security and Traceability** – You can create all of your label templates in the label designer and secure them in the label database. All modifications and print requests are tracked in the database to provide an audit trail of print and label history.

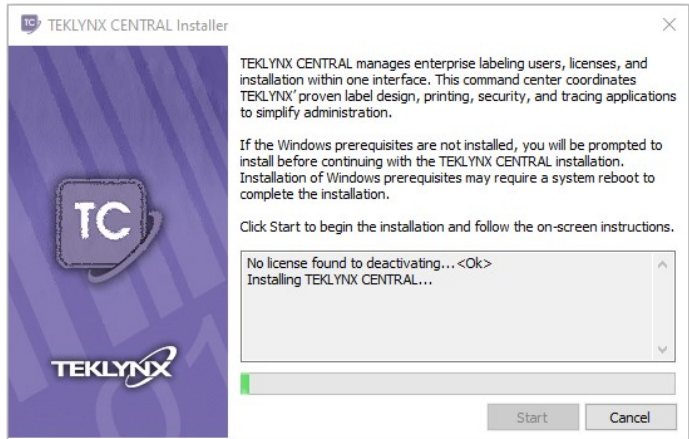
**Browser-Based Printing Interface** – The browser-based printing interface uses a unique data input model that allows you to eliminate unnecessary user steps by limiting access to labels at the work order, workstation, and printer level. In addition, the configurable interface allows you to use terminology specific to your business environment, which reduces training time for new users.

**Label Printing** – Print requests that are sent from a host system or the browser-based user interface are processed and sent to networked printers.

## Installing TEKLYNX CENTRAL

- 1 Within the provided installation files, right-click on TlxInstaller.exe and choose “Run as Administrator.”

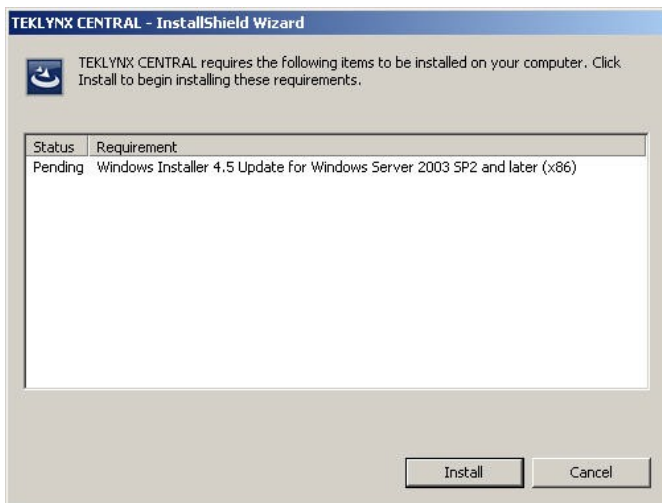
The **TEKLYNX CENTRAL Installer** opens.



**Figure 2-1** TEKLYNX CENTRAL Installer

- 2 Click **Start**. If a required Windows application is missing on your system, the installation program will prompt you to install the prerequisite file.





**Figure 2-2** Required Windows Prerequisite

Click **Install** to install any required prerequisites.

Installation of Windows prerequisites may require a system reboot to complete the installation. If a system reboot is required, a message will appear prompting you to restart your computer. Click **Yes** to restart your computer.

- 3 If all required Windows prerequisites are already installed, or after the installation of any necessary prerequisites has finished, the **TEKLYNX CENTRAL Installation Wizard** appears.

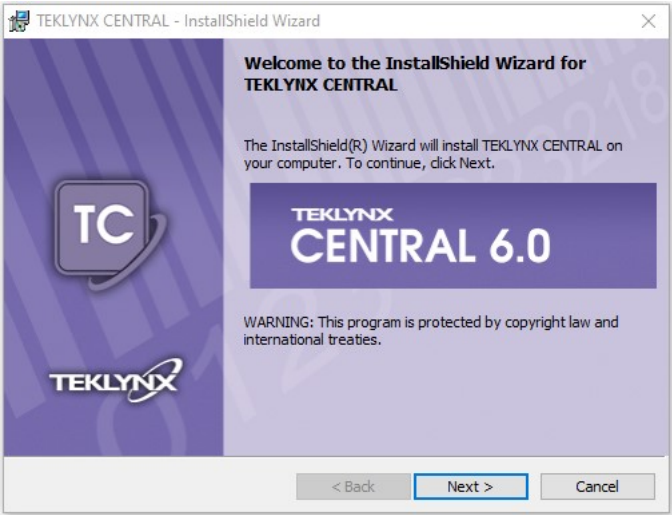


Figure 2-3 TEKLYNX CENTRAL Installation Wizard

4 Click **Next**.

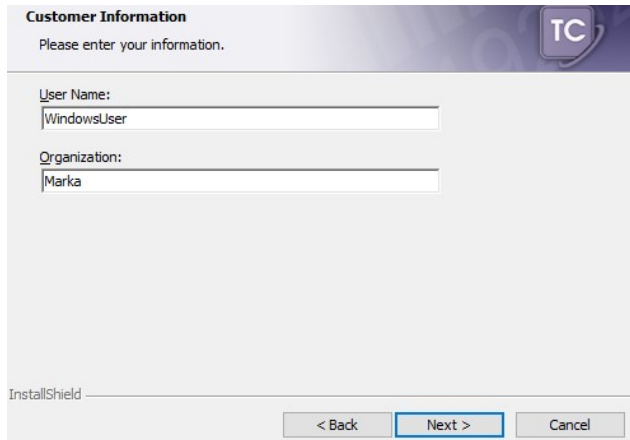
The **License Agreement** window appears.



Figure 2-4 License Agreement window

- 5 Read the license agreement. If you agree with the terms of the license agreement, select **I accept the terms of the license agreement** and click **Next**.

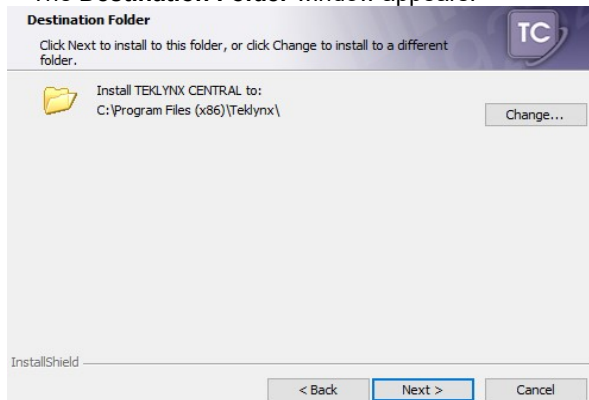
The **Customer Information** window appears.

The image shows a software installation window titled "Customer Information". At the top, it says "Please enter your information." and features a "TC" logo. There are two text input fields: "User Name:" with the text "WindowsUser" and "Organization:" with the text "Marka". At the bottom left, it says "InstallShield". At the bottom right, there are three buttons: "< Back", "Next >" (which is highlighted with a blue border), and "Cancel".

**Figure 2-5** Customer Information window

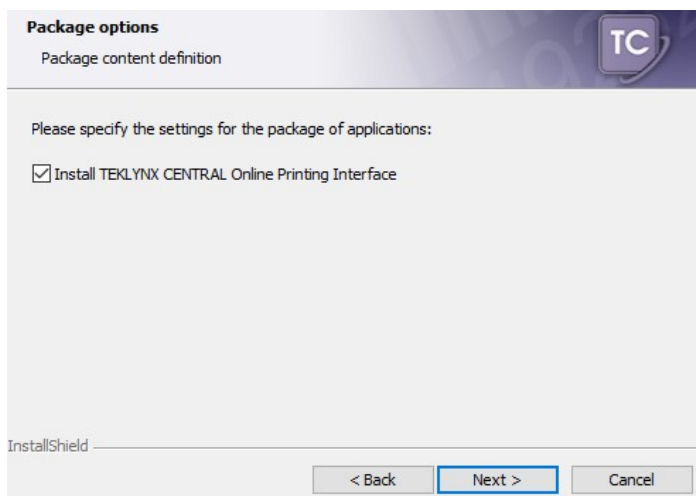
- 6 Enter your name and the name of your company and click **Next**.

The **Destination Folder** window appears.

The image shows a software installation window titled "Destination Folder". At the top, it says "Click Next to install to this folder, or click Change to install to a different folder." and features a "TC" logo. Below this, there is a folder icon and the text "Install TEKLYNX CENTRAL to: C:\Program Files (x86)\Teklynx\". To the right of this text is a "Change..." button. At the bottom left, it says "InstallShield". At the bottom right, there are three buttons: "< Back", "Next >" (which is highlighted with a blue border), and "Cancel".

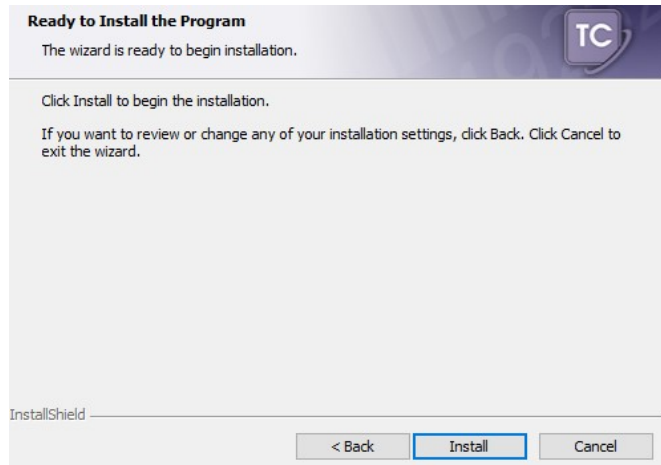
**Figure 2-6** Destination Folder window

- 7 The default installation folder is “C:\Program Files (x86)\Teklynx”. If you would like to change the installation folder, click **Change** and browse to the desired location. Click **Next**.
- 8 On the next screen it's possible to specify if Online Printing Interface should be installed (figure 2-7). Select preferred option and Click **Next**.



**Figure 2-7** Online Printing Interface option

**9** You are ready to install TEKLYNX CENTRAL.



**Figure 2-8** Ready to Install window

- 10** Click **Install** to begin installing TEKLYNX CENTRAL. The installation wizard will indicate when installation is complete.
- 11** At the end of the installation process, a Configuration tool window will appear to let user create new / upgrade database, enter credentials and configure Online Printing Interface websites. SQL Authentication is recommended. Some of the key steps are presented on screenshots below.

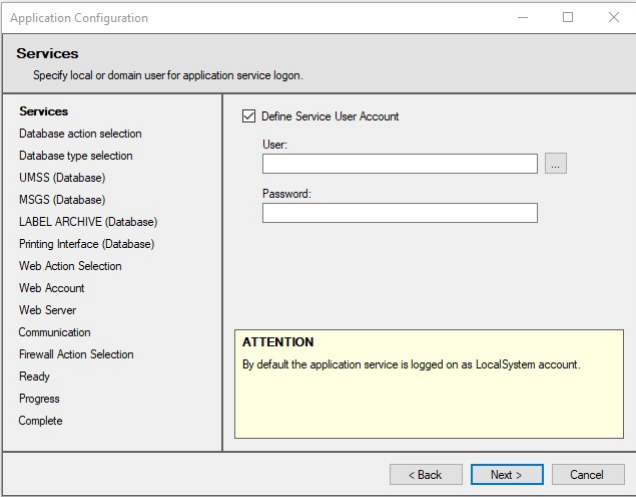


Figure 2-9 Services user selection

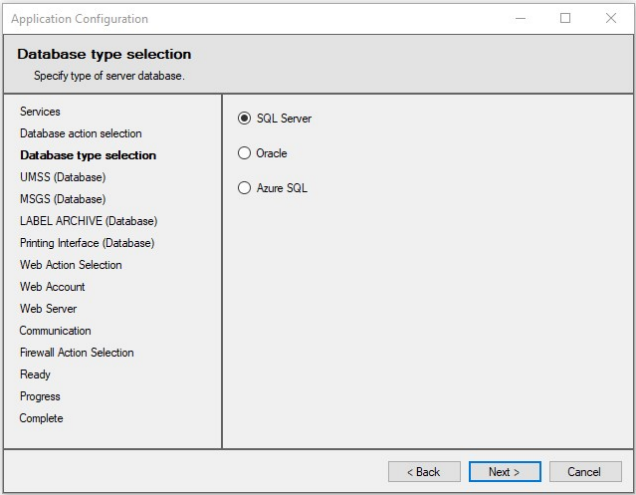
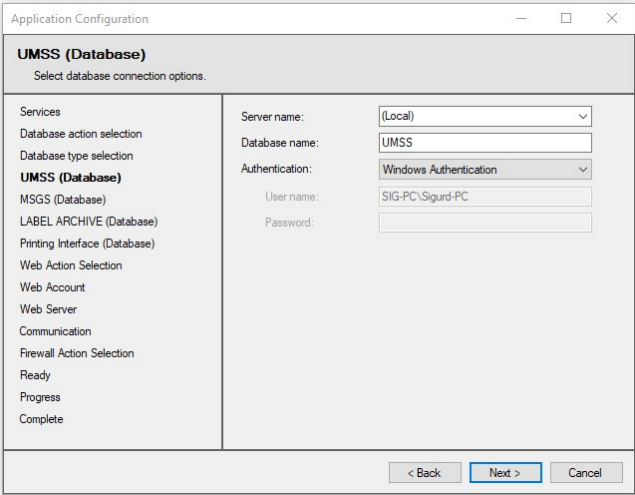
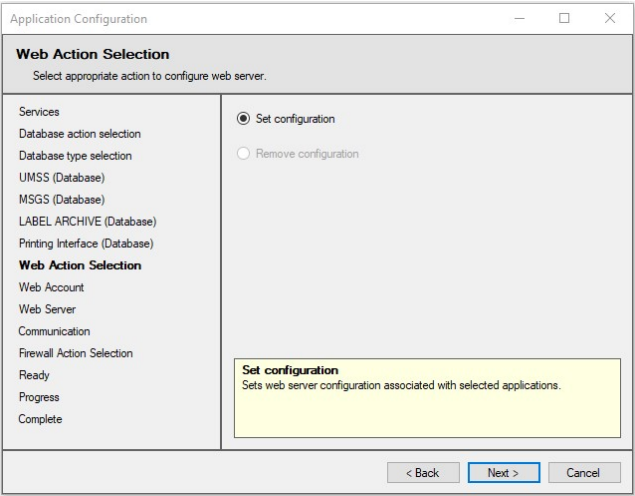


Figure 2-10 Select target database



**Figure 2-11** Entering Database credentials. It's applied for all applications step by step.



**Figure 2-12** Select option to configure or remove exiting configuration

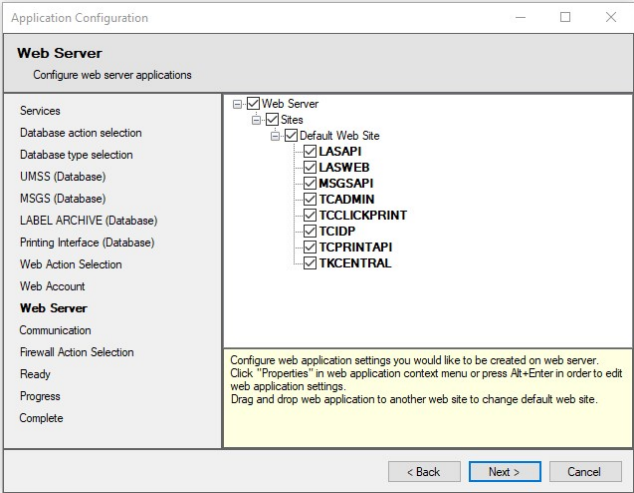


Figure 2-13 Select Web Sites to be installed

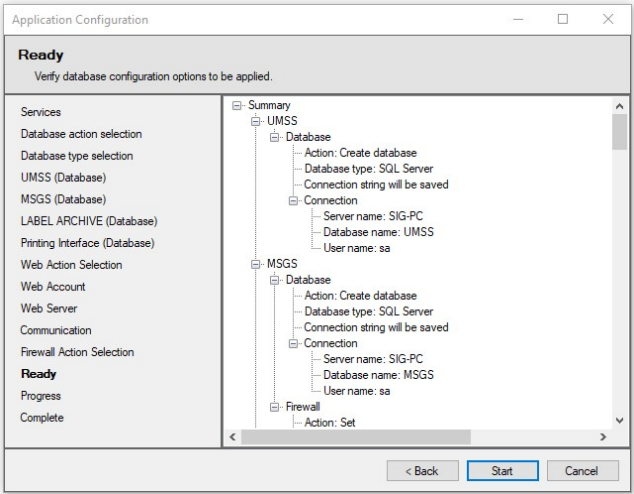


Figure 2-14 Recap all configuration screen and click Start to install databases and finalize installation.

**12** When installation is complete, click **Close** to exit the TEKLYNX CENTRAL Installer.



Installing Software on a Client Workstation from Server Push

- 1 Click the **Install Label Designer on Remote Workstation** link in the Workstation Install section of the Command Center.  
The **TEKLYNX CENTRAL Remote Installation** window appears.

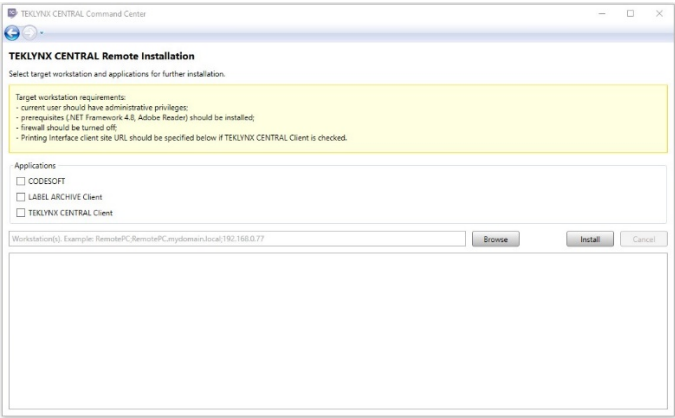


Figure 3-21 TEKLYNX CENTRAL Remote Installation window

- 2 Click **Browse** and locate the remote workstation.  
Select the client workstation in the list.  
**Note:** The user who is attempting to install the application via TEKLYNX CENTRAL must be a local administrator on the remote workstation for the installation to be successful.
- 3 Click **Install** to begin the installation.
- 4 It is often necessary to adjust firewall settings to allow for successful installation of the client applications. Refer to TC Remote Installation Guide for additional information.

## **Installing Client Applications Manually**

You can also install the label designer and label manager applications directly from the installer files.

- 1** Within the provided installation files, there is a directory for RemoteInstall. Here you will find the necessary files for a manual installation of CODESOFT, LABEL ARCHIVE, and necessary Plugin Files for client level workstations.
- 2** The TCRemoteClientsInstall.bat will contain all necessary commands to install each component individually. Refer to Manual Client Installation Guide for more details.



**France**

+33 (0) 562 601 080

**Germany**

+49 (0) 2103 2526 0

**Singapore**

+65 6908 0960

**United States**

+1 (414) 837 4800

Copyright 2021 TEKLYNX Corporation SAS. All rights reserved. LABEL MATRIX, LABELVIEW, CODESOFT, LABEL ARCHIVE, SENTINEL, PRINT MODULE, BACKTRACK, TEKLYNX CENTRAL, TEKLYNX, and Barcode Better are trademarks or registered trademarks of TEKLYNX Corporation SAS or its affiliated companies. All other brands and product names are trademarks and/or copyrights of their respective owners.

[www.teklynx.com](http://www.teklynx.com)

