

TEKLYNX®

LABEL ARCHIVE

SETTING THE STANDARD



Setting the Standard

TEKLYNX
BAR CODE SOFTWARE



UMSS User Guide

The information in this manual is not binding and may be modified without prior notice.

Supply of the software described in this manual is subject to a user license. The software may not be used, copied or reproduced on any medium whatsoever, except in accordance with this license.

No portion of this manual may be copied, reproduced or transmitted by any means whatsoever, for purposes other than the personal use of the buyer, unless written permission is obtained from Teklynx Newco SAS.

©2015 Teklynx Newco SAS
All rights reserved.

Teklynx and its products are trademarks or registered trademarks of Teklynx Newco SAS. All other brands and product names are the trademarks of their respective owners.

Table of Contents

About this manual	iii
Typographical conventions	iii
About your product	iv
Chapter 1: Introduction	1-1
Scope of the document	1-1
Chapter 2: UMSS Overview	2-2
Elements of UMSS	2-2
Users	2-2
User-groups	2-3
Permission objects	2-4
Registered applications	2-5
Sessions	2-5
Chapter 3: Using UMSS	3-6
MSGS Messages sent by UMSS	3-6
Client configuration user interfaces	3-9
Logon configuration	3-9
Logon	3-10
Logon user interface	3-10
UMSS mode logon	3-10
Server Management user interfaces	3-13
Users in MMC	3-13
User properties (User tab)	3-14
User properties (Group memberships)	3-16
User groups in MMC	3-17
User group properties (User group tab)	3-18
User group properties (Permissions tab)	3-19
Registered applications in MMC	3-21
Sessions in MMC	3-22

About this manual

Typographical conventions

This manual distinguishes between different types of information using the following conventions:

- Terms taken from the interface itself, such as commands, appear in **bold**.
- Keys appear in small caps, for example: “Press the SHIFT key.”
- Numbered lists mean there is a procedure to follow.
- When the conjunction -or- appears next to a paragraph, it means there is the choice of another procedure for carrying out a given task.
- When a menu command contains submenus, the menu name followed by the command to select appear in bold. Thus, “Go to **File > Open**” means choose the **File** menu then the **Open** command.



This symbol highlights important information on how a particular command or procedure works.



Following this symbol, you will find hints and tips for optimizing tasks, speeding up commands, and so on.

About your product

Some of the functions described in this manual may not be available in your product.

For the complete list of specific features available in your software, refer to the specification sheet provided with the product.

CHAPTER 1

Introduction

Scope of the document

This document describes the Teklynx User Management System (UMSS) software. The first part of the user guide defines the overview of UMSS. The other sections of the document provide usage information about the user interface elements.

UMSS is software implemented in Client-Server architecture. The client part is integrated into applications using UMSS. Depending on the method of integration, the features and appearance of the client side of the software may be different than shown in this document. If you find deviations from the information of this document, see the documentation of the integrating application.

CHAPTER 2

UMSS Overview

Elements of UMSS

The main role of UMSS is to manage user accounts and provide permission control to applications integrating it.

UMSS handles a series of object to implement its functionality. These objects (for example, user accounts, user-groups, permission items) are persisted in the server database.

The following sections explain these types of objects in detail.

Users

User (or user account) objects represent a single identity using the current session of a TEKLYNX application.

To become the current user of an application session, the user must authenticate itself. UMSS supports two kind of authentication:

UMSS authenticated users are managed completely by UMSS; the user account exists only in a UMSS server. The authentication is made by asking a password from the user.

Windows authenticated users are shared; managed by UMSS and Windows. The UMSS user account is created by importing an already existing Windows network domain or local user. The authentication is made by Windows. If

Windows authenticated the user, UMSS finds the matching UMSS user account for the Windows user account.

There is no direct permission management at the user level. Users are members of user groups. A user can be member of any number of user groups. User permissions are calculated from the permissions of the user groups where the user is a member.

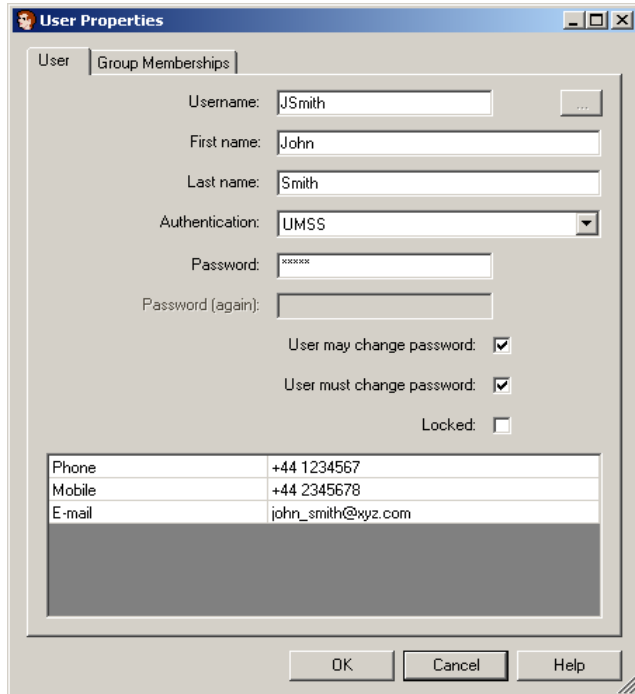


Figure 1 User Properties window

User Groups

User groups represent certain roles of users. The users can be assigned as members of user groups. A user can be member of any number of user groups.

Permissions are managed at the user group level. Permissions are assigned to user groups. The permissions of a user are the results of the combination of the

permissions of the user groups owning it as a member.

The logic of permission combination grants a given permission to a user if any of the user groups that have the user as a member grants that permission.

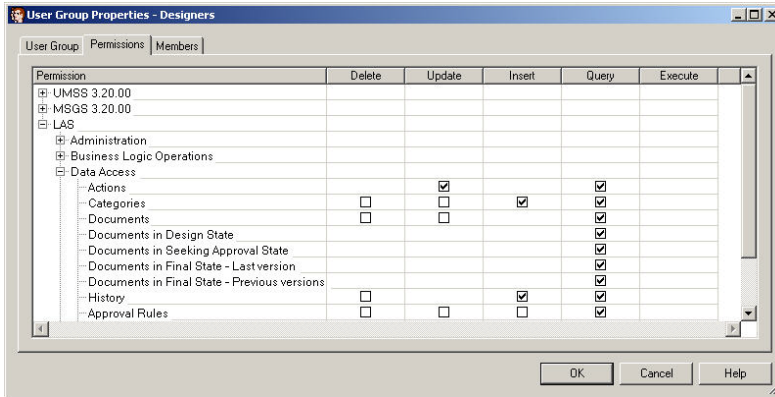


Figure 2 User Group Properties window

Permission objects

The **Permissions** tab of the **User Group Properties** window presents the permission objects as a matrix: the rows are permission items, and the columns represent permission verbs.

There are two types of permission objects:

Permission items represent elements of a TEKLYNX application on which permission control is implemented. They are identified by unique textual identifiers, which are invisible for users.

A variable number of **permission verbs** can be interpreted on each permission item. The permission verbs represent usual operations. For permission items like application functions, menu items, the usual permission verb controls the execution of it. Data like permission items usually have permission verbs identifying data query and modification operations.

Registered applications

UMSS server keeps track of each TEKLYNX application connecting to it.

Sessions

The UMSS server maintains a record of each connection. There is a session object in the UMSS database for each connection.

When the connection to the server terminates, the session object is deleted.

If the server detects no activity for a long period of time (defined by a configuration parameter) the server assumes the session to be dead and deletes it.

CHAPTER 3

Using UMSS

MSGS Messages sent by UMSS

The UMSS server – if installed with MSGS – sends messages to MSGS. The following table lists the messages, their properties, parameters and description.

Message Code/Description	Category	Type	Level
MSG_SERVER_STARTED	NORMAL	INFO	1
Sent after the server is started up	Parameter name	Parameter description	
	SERVERNAME	Name of the server (UMSS)	
Message Code/Description	Category	Type	Level
MSG_SERVER_STOPPED	NORMAL	INFO	1
Sent before the server is shut down	Parameter name	Parameter description	
	SERVERNAME	Name of the server (UMSS)	
Message Code/Description	Category	Type	Level
MSG_APP_LOGON	NORMAL	INFO	2

Sent each time an application logs to the server	Parameter name	Parameter description	
	APPLICATION	Name of the application	
	WORKSTATION	Name of the client workstation	
Message Code/Description	Category	Type	Level
MSG_APP_LOGOFF	NORMAL	INFO	2
Sent each time an application logs off from the server	Parameter name	Parameter description	
	APPLICATION	Name of the application	
	WORKSTATION	Name of the client workstation	
Message Code/Description	Category	Type	Level
MSG_APP_REGISTRATION	NORMAL	INFO	2
Sent when an application is registered on the server	Parameter name	Parameter description	
	APPLICATION	Name of the application	
	VERSION	Version of application	
	WORKSTATION	Name of the client workstation	
Message Code/Description	Category	Type	Level
MSG_USER_LOGON	NORMAL	INFO	2
Sent each time a user logs into the server	Parameter name	Parameter description	
	USERNAME	Name of the logging on	
	APPLICATION	Name of the application	
	WORKSTATION	Name of the client workstation	

Message Code/ Description	Category	Type	Level
MSG_USER_LOGOFF	NORMAL	INFO	2
Sent each time a user logs off of the server	Parameter name	Parameter description	
	USERNAME	Name of user logging off	
	APPLICATION	Name of the application	
	WORKSTATION	Name of the client workstation	
Message Code/ Description	Category	Type	Level
MSG_UNHANDLED_SERVER_EXCEPTION	DIAGNOSTIC	ERROR	1
Sent when an unhandled exception happens in the server	Parameter name	Parameter description	

Client configuration user interfaces

Logon configuration

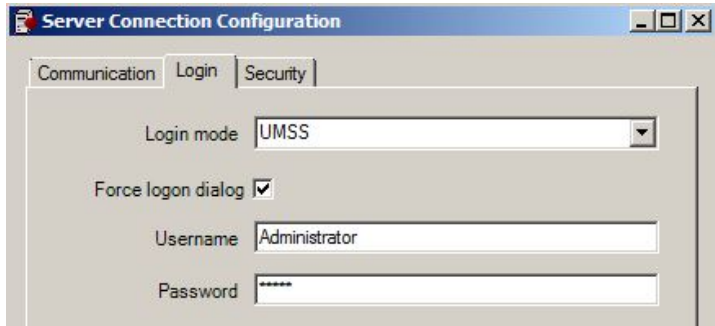


Figure 1 Sample logon configuration

The property page allows you to specify logon configuration.

Logon mode

Select the logon mode. Possible values:

•Windows

User is logged on with Windows authentication. The user is either logged on automatically or by specifying a valid domain name, user name and password.

•UMSS

User is logged on with UMSS authentication. The user must specify a valid UMSS user name and password.

Force logon dialog

Select the **Force logon dialog** option to force the logon dialog to be shown. If this option is off, a silent (automatic) logon is attempted. If the automatic logon fails, the logon

form is shown. If this option is checked, the logon dialog is always shown.

Domain

Enter the domain name for Windows mode logon.

User name

Enter the default user name.

Password

Enter the default password.

Logon

UMSS provides different logon dialogs for the different logon modes. The next section describes each appearance of the logon dialog.

Logon user interface

- UMSS mode logon

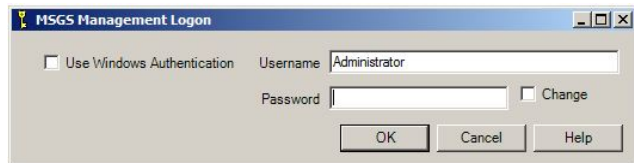


Figure 2 Sample UMSS mode logon



Figure 3 Sample UMSS mode logon with password confirmation

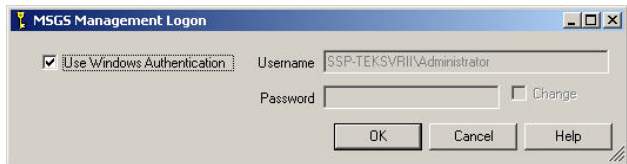


Figure 4 Sample Windows mode logon

The UMSS mode logon window allows users to log on to UMSS with UMSS authentication.

User name

Enter the name of a UMSS user account. The user account must be configured with UMSS authentication mode.

Password

Enter the password of the user account.

Change

Select this option to change the password of the user account. If the option is selected, the **New Password** and the **Confirm Password** fields appear.

New password

Enter the new password.

Confirm Password

Enter the new password again for confirmation.

Built-in Administrator user

UMSS contains the built-in user account administrator. This user account grants all permissions. After installation, the default password is 'admin'.

Use Windows Authentication

Select **Use Windows Authentication** to log in using the active Windows account.

Server Management User Interfaces

Users in MMC

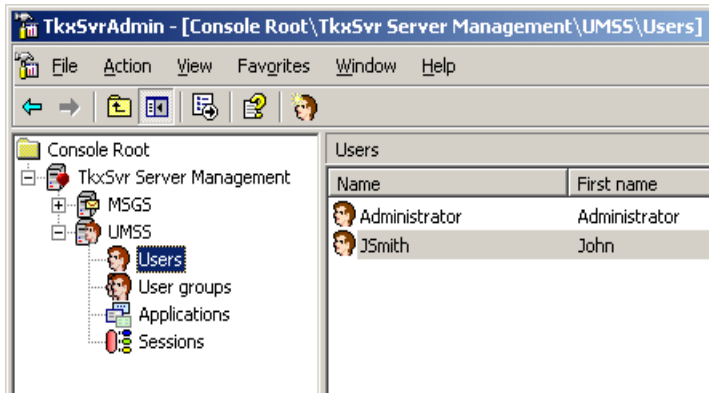


Figure 5 Sample of users in MMC

The scope item of the snap-in manages UMSS users.

List of users.

Lists users defined in UMSS. The list displays the username (the name of the user account) and the first and last name of the user.

New User

Use the **New User** toolbar button or context menu item to create a new user account. The **User Properties** window opens.

Properties

Use the **Properties** toolbar button or context menu item to modify an existing user account. The **User Properties** window opens.

Delete

Use the **Delete** toolbar button or context menu item to delete the selected user(s).

- **User Properties (User tab)**

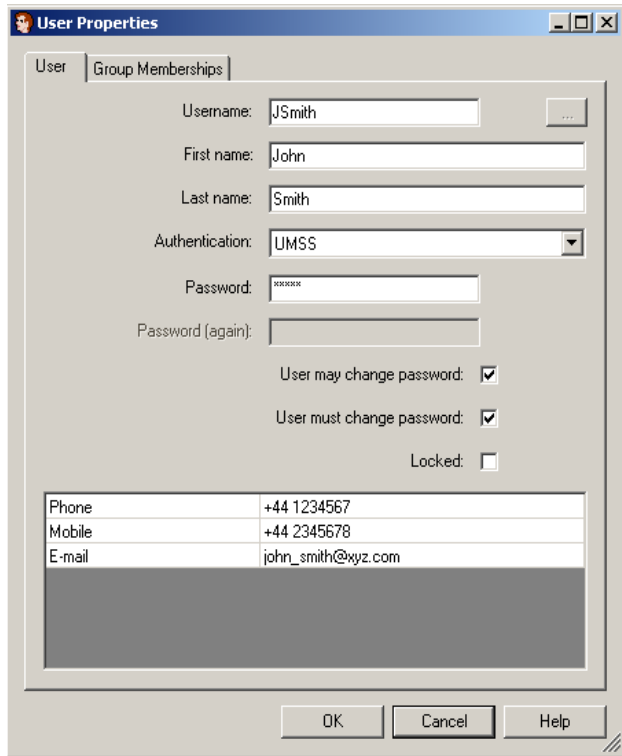


Figure 6 User tab on User Properties window

The property page allows you to edit properties of a user account.

User name

Enter the name of the user account, if UMSS authentication is set. User name must be unique within UMSS. For Windows authenticated users, this field is disabled.

Browse (...)

Click the browse button to browse for a Windows user account in case of Windows authentication. For UMSS authenticated users, this button is disabled.

First name

Enter the first name of the user.

Last name

Enter the last name of the user.

Authentication

Select the mode of authentication for the user account.
Possible values:

•Windows

Users can log on with this account using Windows authentication. The user account name has a special format in this mode. It is made of a domain or computer name, a backslash character, and the local user name on the given domain or computer.

•UMSS

UMSS authenticates the user using a user name and password. User account name has a free format in this mode.

Password

Enter the password for UMSS authentication. This field is disabled in Windows authentication mode.

Confirm Password

Enter password again for confirmation. This field is disabled in Windows authentication mode.

User may change password

Select this option to allow the user to change the password of the account at next logon. This field is disabled in Windows authentication mode.

User must change password

Select this option to force the user to change their password of the account at next logon. This field is disabled for Windows authentication mode.

Locked

Select this option to temporarily disable the account. This field is disabled in Windows authentication mode.

Extra properties

There may be additional user properties depending on the configuration of the UMSS server. These extra properties are usually related to postal address, phone number or e-mail address.

- **User Properties window (Group memberships tab)**

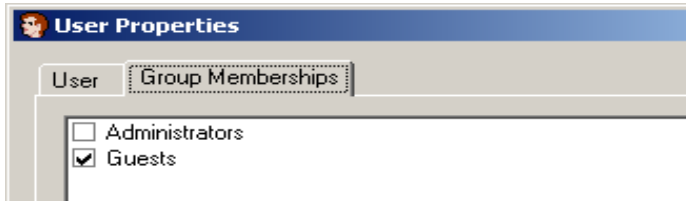


Figure 7 Group Memberships tab on User Properties window

The Group Memberships tab allows you to specify the user groups a user belongs to.

Note

Permissions of user groups are combined. A permission is granted for the user if any of the user groups – where the user is a member – has that permission granted.

User groups

- User groups in MMC

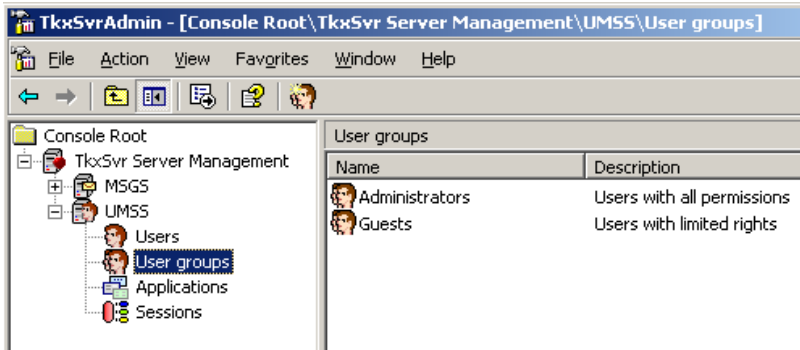


Figure 8 Sample of user groups in MMC

The scope item of the MMC snap-in manages UMSS user groups.

List of user groups.

Lists user groups defined in UMSS. The list displays the name and description of user groups.

New User group

Use the **New User** group toolbar button or context menu item to create a new user group. The **User Properties** window opens.

Properties

Use the **Properties** toolbar button or context menu item to modify an existing user group. The **User Group Properties** window opens.

Delete

Use the **Delete** toolbar button or context menu item to delete the selected user group(s).

- **User-group properties (User-group tab)**

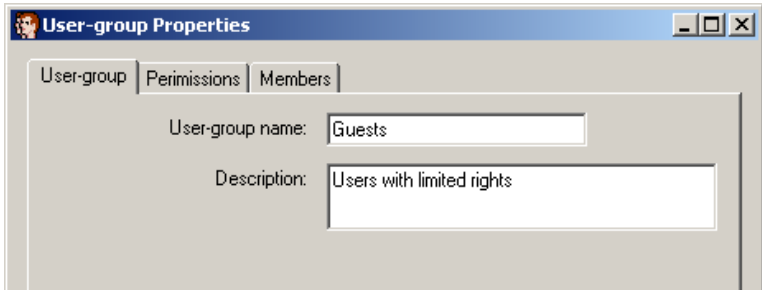


Figure 9 User Group tab on User Group Properties window

The User Group tab allows you to edit basic user group properties.

User group name

Enter the name of the user group. User group name must be unique within UMSS. In case of a built-in user group, this field is disabled.

Description

Enter the description of the user group.

- **User group Properties window (Permissions tab)**

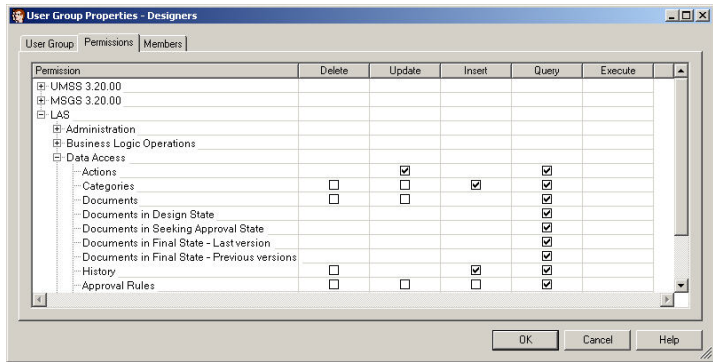


Figure 10 Permissions tab on User Group Properties window

The Permissions tab allows you to edit permissions of a user group.

Permissions Table

Permissions can be edited in a table. The first column of the table contains the hierarchically ordered controllable permission item groups by application. Each column of the grid corresponds to a permission verb. If a permission verb is associated with a permission item, a checkbox is shown in the grid. Use this checkbox to grant or deny permission.

Permissions of built-in user groups cannot be changed. The table is disabled for built-in groups.

Expand

Use the **Expand** context menu item on collapsed tree nodes to expand the node of the tree.

Expand all

Use the **Expand all** context menu item on collapsed tree nodes to expand the node of the tree completely.

Collapse

Use the **Collapse** context menu item on expanded tree nodes to collapse the node of the tree.

Collapse all

Use the **Collapse All** context menu item on expanded tree nodes to collapse the node of the tree completely.

Grant All Permissions

Use the **Grant All Permissions** context menu item on tree nodes to grant all permissions for all permission items of the sub tree.

Deny All Permissions

Use the **Deny All Permissions** context menu item on the tree nodes to deny all permissions for all permission items of the sub tree.

Registered applications

- Registered applications in MMC

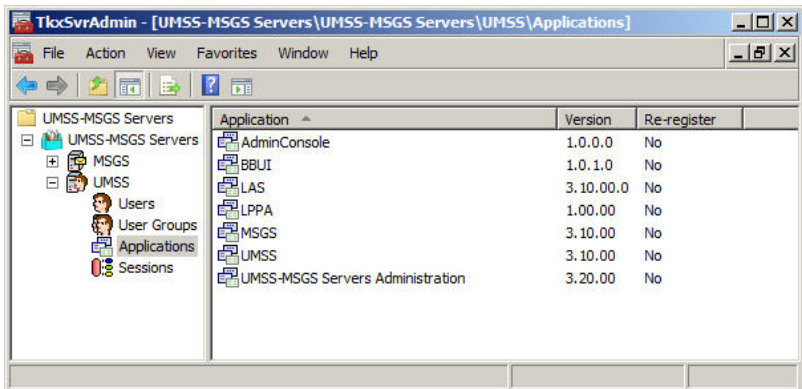


Figure 11 Sample of registered applications in MMC

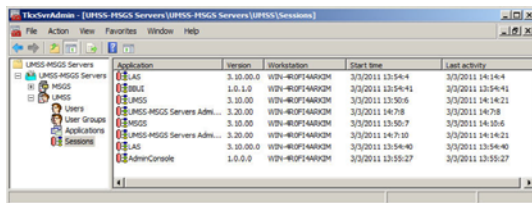
The scope item of the MMC snap-in manages applications registered on UMSS .

List of applications.

Provides a list of registered TEKLYNX applications. The list displays the name and version of the installed application.

Sessions

- Sessions in MMC



Application	Version	Workstation	Start time	Last activity
LAG	3.10.00.0	WIN-80P14ARX2M	3/3/2011 13:54:4	3/3/2011 14:14:4
BLAT	1.0.1.0	WIN-80P14ARX2M	3/3/2011 13:54:41	3/3/2011 13:54:41
MSGS	3.10.00	WIN-80P14ARX2M	3/3/2011 13:50:6	3/3/2011 14:14:23
UMSS-MSGS Servers Adm...	3.20.00	WIN-80P14ARX2M	3/3/2011 14:7:8	3/3/2011 14:7:8
MSGS	3.10.00	WIN-80P14ARX2M	3/3/2011 13:50:7	3/3/2011 14:10:6
UMSS-MSGS Servers Adm...	3.20.00	WIN-80P14ARX2M	3/3/2011 14:7:10	3/3/2011 14:14:23
MSGS	3.10.00.0	WIN-80P14ARX2M	3/3/2011 13:54:40	3/3/2011 13:54:40
AdminConsole	1.0.0.0	WIN-80P14ARX2M	3/3/2011 13:55:27	3/3/2011 13:55:27

Figure 12 Sample of sessions in MMC

The scope item of the MMC snap-in manages UMSS sessions.

Sessions List

Provides a list of sessions of currently connected applications. The list displays the name and version of the connected application, the name of the workstation, the time when the session started, and the time of the last activity. Every user session will be listed by workstation name.

Delete

Use the **Delete** toolbar button or the **Delete** menu item of the context menu to terminate a session. Terminating a session is the last chance action for a system administrator. It must be used with care.

Note

UMSS maintains the time of the last action of connected

applications. If an application does not make any activity on the UMSS server for a long period of time (defined in the server configuration), the server terminates the session of the application.



France
33-562-601-080

Germany
49-2103-2526-0

Singapore
65-6908-0960

United States
1-414-837-4800

Copyright 2015 Teklynx Newco SAS. All rights reserved. TEKLYNX and LABEL ARCHIVE are trademarks or registered trademarks of Teklynx Newco SAS or its affiliated companies. All other brands and product names are trademarks and/or copyrights of their respective owners.

www.teklynx.com

